



CHINA – COILING DRAGON CHINESE IMPERIAL POST PART - I

DESTINATIONS & FRANKING

1897-1912

THOMAS LINDEKENS

SUMMARY

1. Mixed Franking China & French stamps (Before January 1, 1902)
2. Mixed Franking China & British stamps (Hongkong) (Before February 1, 1905)
3. Franking & destinations with only « Coiling dragon »
 - A. Rate of Feb. 2, 1897 to Oct. 1, 1907. (Weight in oz.)
 - B. Rate of Oct. 1, 1907 to Aug. 5, 1910. (Weight in oz.)
 - C. Rate of Aug. 5, 1910 to Jan. 1, 1922 (Weight in g.)

The background is a dark blue gradient. In the four corners, there are white, stylized circuit board traces. These traces consist of straight lines that turn at right angles, ending in small circles that represent solder pads or vias. The patterns are symmetrical and decorative, framing the central text.

1. MIXED FRANKING CHINA & FRENCH STAMPS (BEFORE JANUARY 1, 1902)

1. MIXED FRANKING CHINA & FRENCH STAMPS (BEFORE 1/1/1902)

At the beginning of the national postal service, China had to rely upon the alien postal agencies for exchange of mail with foreign countries. Senders were encouraged to hand their letters for foreign countries to the Chinese offices franked with Chinese stamps at international rates; the Chinese service then affixed foreign stamps at the same rates handed the letters to the foreign offices in Shanghai (only in Shanghai for French stamps). In this way the Chinese offices, though they received no part of the postage, still introduced the principle that they were to handle the mail matter.

(Sieh and Blackburn – Postage rates of China 1867-1980 pg. 11)

1. MIXED FRANKING CHINA & FRENCH STAMPS (BEFORE 1/1/1902)

- Stamps = China + French stamps type Sage with overprint « Chine »
- French stamps was applied by the CHINESE IMPERIAL POST of Shanghai
- French stamps was cancelled at Shang-Hai (French post office)

1. MIXED FRANKING CHINA & FRENCH STAMPS (BEFORE 1/1/1902)

Chinese international postage rates Feb. 2, 1897 to Oct. 1, 1907.

Category	Unit of weight	price
Letters	Each 1/2 oz.	10c.
Post cards		4c.
Printed matter	Each 2 oz.	2c.
Minimum for:	Each 2 oz.	10c.
C. Papers	Each 2 oz.	4c.
Samples		
Registration for U.P.U. countries (type VI)		10c.
AR (acknowledgment of receipt)		10c.

1. MIXED FRANKING CHINA & FRENCH STAMPS (BEFORE 1/1/1902)

French postage's rates

Category	Unit of weight	price
Letters	Each 15gr.	25c.
Post cards		10c.
Post cards	less than 5 words	5c.
Printed matter	Each 50gr.	5c.
Registration		25c.
AR (acknowledgment of receipt)		25c.

1. MIXED FRANKING CHINA & FRENCH STAMPS (BEFORE 1/1/1902)

Destination France

Postage rate (printed matter)

China postage

- 2c. each 2 oz.

French postage

- 5c. each 50 g.



Printed matter sent from Peking May 8, 1900 to Paris/France. Transit by Shanghai May 14, 1900 and Shang-Hai (French post office) May 16, 1900.

1. MIXED FRANKING CHINA & FRENCH STAMPS (BEFORE 1/1/1902)

Destination Germany

Postage rate for postcard = 4c. (China postage) + 10c. (French postage)



Postcard sent from Peking June 1, 1901 to Bautzen/Germany where it arrived July 14, 1901. Transit by Shanghai June 7, 1901 and Shang-Hai (French post office) June 8, 1901.

1. MIXED FRANKING CHINA & FRENCH STAMPS (BEFORE 1/1/1902)

Destination Austria

Postage rate for postcard = 4c. (China postage) + 10c. (French postage)



Postcard sent from Tientsin June 25, 1901 to Wien/Austria where it arrived August 4, 1901. Transit by Shanghai June 29, 1901 and Shang-Hai (French post office) July 1, 1901.

1. MIXED FRANKING CHINA & FRENCH STAMPS (BEFORE 1/1/1902)

Destination Germany

Postage rate for postcard = 4c. (China postage) + 10c. (French postage)



Type Sage
Type B Chan FF5

Postcard sent from Shanghai November 25, 1899 to Berlin/Germany. Transit by Shang-Hai (French post office) November 7, 1899. Redirected to Kiel.

1. MIXED FRANKING CHINA & FRENCH STAMPS (BEFORE 1/1/1902)

Destination Italy

Postage rate for Postcard = 4c. (China postage) + 10c. (French postage)



Type Sage
Type A Chan FF4

Postcard sent from Shanghai January 11, 1901 to Italy. Transit by Shang-Hai (French post office)

January 12, 1901. Redirected to Castellammare/Italy where it arrived February 21, 1901.

1. MIXED FRANKING CHINA & FRENCH STAMPS (BEFORE 1/1/1902)

Destination UK forwarded to France

Postage rate for Postcard = 4c. (China postage) + 10c. (French postage)



Postcard sent from Tientsin November 13, 1901 to London/England where it arrived December 27, 1901 and forwarded to Paris / France. Transit by Shanghai November 21, 1901 and Shang-Hai (French post office) November 22, 1901.

1. MIXED FRANKING CHINA & FRENCH STAMPS (BEFORE 1/1/1902)

Destination France

Postage rate for Postcard = 4c. (China postage) + 10c. (French postage)



Postal stationery with additional postage sent from Paoting May 28, 1901 to Villemonble/France where it arrived in July. Transit by Shanghai June 4, 1901 and Shang-Hai (French post office) June 6, 1901.

1. MIXED FRANKING CHINA & FRENCH STAMPS (BEFORE 1/1/1902)

Destination Germany

Postage rate for Postcard = 4c. (China postage) + 10c. (French postage)



Postal stationery with additional postage sent from Nanking December 17, 1900 to Sörup / Germany where it arrived January 30, 1901. Transit by Shanghai December 18, 1900 and Shang-Hai (French post office) December 26. Carried by French ship (« Oceanien ») of the line « N » December 27, 1900.

1. MIXED FRANKING CHINA & FRENCH STAMPS (BEFORE 1/1/1902)

Destination England

Postage rate

China postage

- 10c./ 1/2 oz.

French postage

- 25c./15gr.



Letter sent from Hankow December 7, 1901 to Kidderminster/England where it arrived January 20, 1902. Transit by Shanghai December 11, 1901 and Shang-Hai (French post office) December 11, 1901.

1. MIXED FRANKING CHINA & FRENCH STAMPS (BEFORE 1/1/1902)

Destination France

Postage rate

China postage

- 10c./ 1/2 oz.
- 10c. Registration

French postage

- 25c./15gr.
- 25c. Registration



Registered letter sent from Tientsin November 23, 1900 to Paris / France. Transit by Shang-Hai (French post office) November 28, 1900.

1. MIXED FRANKING CHINA & FRENCH STAMPS (BEFORE 1/1/1902)

Destination France

Postage rate

China postage

- 10c./ 1/2 oz.
- 10c. Registration

French postage

- 25c./15gr.
- 25c. Registration



Registered letter sent from Peking May 3, 1900 to Bordeaux/France where it arrived June 15, 1900.

Transit by Shanghai May 10, 1900 and Shang-Hai (French post office) May 11, 1900.

1. MIXED FRANKING CHINA & FRENCH STAMPS (BEFORE 1/1/1902)

Destination England

Postage rate

China postage

- 10c./ 1/2 oz. (2x)

French postage

- 25c./15gr. (2x)



Letter sent from Hankow December 7, 1901 to London/England. Transit by Shanghai December 11, 1901 and Shang-Hai (French post office) December 11, 1901.

1. MIXED FRANKING CHINA & FRENCH STAMPS (BEFORE 1/1/1902)

Destination Netherlands

Postage rate

China postage

- 10c./ 1/2 oz. (2x)
- 10c. Registration

French postage

- 25c./15gr. (2x)
- 25c. Registration



Registered letter sent from Peking November 28, 1899 to La Haye/Netherlands where it arrived January 7, 1900. Transit by Shanghai December 4, 1899 and Shang-Hai (French post office) December 4, 1899.

1. MIXED FRANKING CHINA & FRENCH STAMPS (BEFORE 1/1/1902)

Destination Germany

Postage rate

China postage

- 10c./ 1/2 oz. (8x)

French postage

- 25c./15gr. (8x)



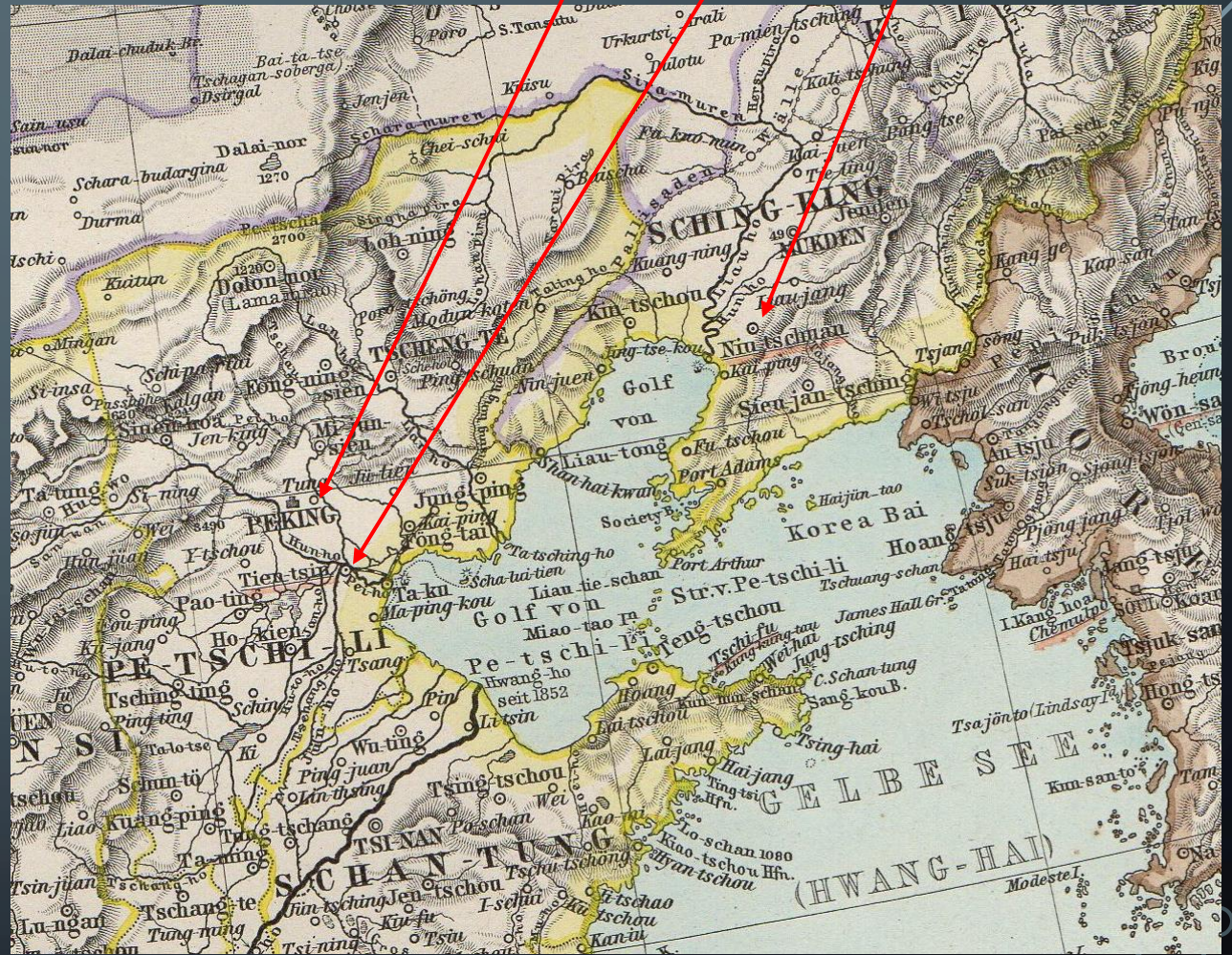
Letter sent from Kiukiang November 11, 1900 to Munchen/Germany where it arrived December 20, 1900.

Transit by Shanghai November 13 and Shang-Hai (French post office) November 14. (carried by French boat) .

1. MIXED FRANKING CHINA & FRENCH STAMPS (BEFORE 1/1/1902)

THE WINTER RATE

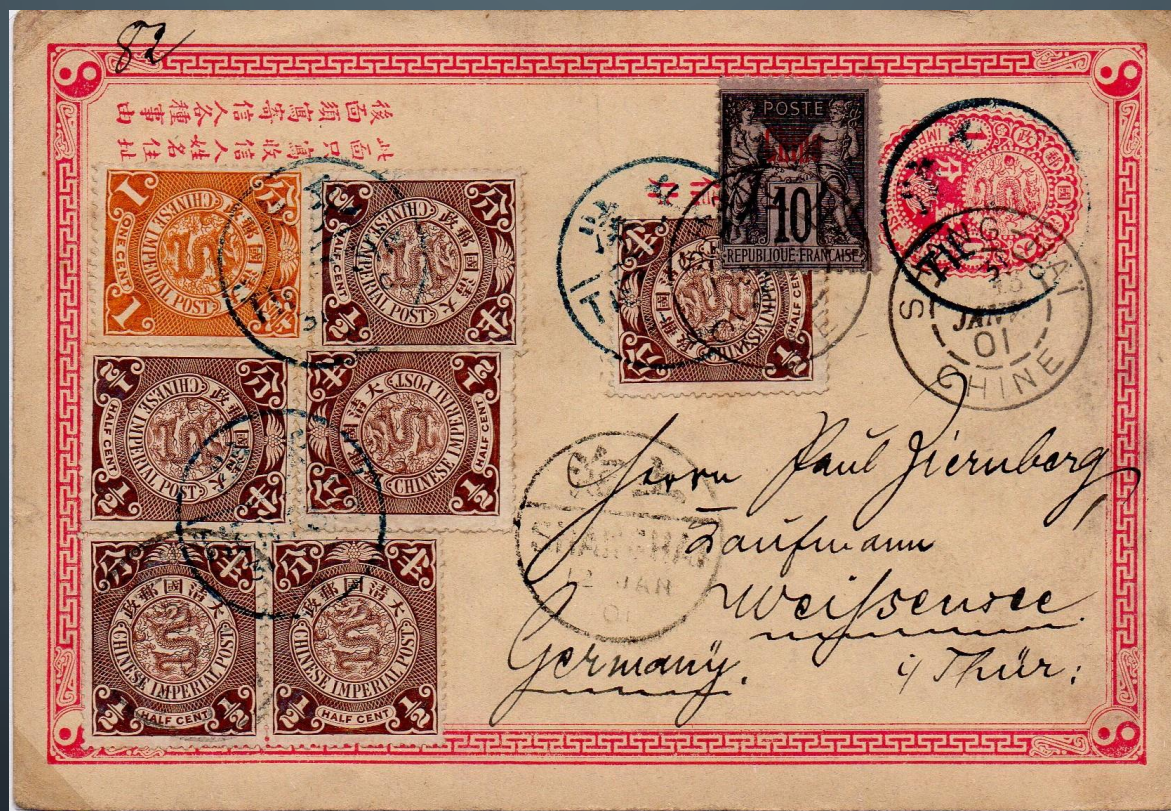
Domestic postage had to be paid additionally by senders or addressees, as the case may be, on international mail articles posted at, or addressed to, the three northern post offices, Peking, Tientsin, Newchang during winter season from 1897 to October 10th, 1902.



1. MIXED FRANKING CHINA & FRENCH STAMPS (BEFORE 1/1/1902)

Destination Germany – Winter rate

Postage rate for postcard = 4c. + 1c. (winter domestic rate) (China postage) + 10c. (French postage)



Postal stationery with additional postage sent from Tientsin December 31, 1900 to Weifseuse / Germany. Transit by Shanghai January 12, 1901 and Shang-Hai (French post office) January 13, 1901.

The background is a dark blue-grey color. In the four corners, there are decorative white line-art patterns that resemble circuit traces or stylized trees. Each pattern consists of several vertical lines that branch out at various angles, ending in small circles. The patterns are symmetrical and mirror each other across the center.

2. MIXED FRANKING CHINA & BRITISH STAMPS (HONGKONG) (BEFORE FEBRUARY 1, 1905)

2. MIXED FRANKING CHINA & BRITISH STAMPS (HONGKONG) (BEFORE FEBRUARY 1, 1905)

- Stamps = China + Hongkong
- Hongkong stamps was applied by the CHINESE IMPERIAL POST
- Hongkong stamps was cancelled by the first British post office

2. MIXED FRANKING CHINA & HONGKONG STAMPS (BEFORE FEBRUARY 1, 1905)

I.P.O.



Owing to minimizing the heavy work of additional affixing of stamps by Shanghai office, it was ordered by the Postal Circular #4 dated Dec. 14, 1897 which stated that the work of affixing foreign stamps might be done at the post offices of dispatching by supplying Hongkong and Japanese stamps. Under such transition of mails at Shanghai office, it was unavoidably the adhesives might be lost, thus for the purpose of evidencing the fact of stamps being affixed, Post Offices of all districts had to make a small marking of "I.P.O." as tie print on covers and stamps which was just for in case that affixed stamps might happen to be lost.

(P. Ke-Shing Chang – History of Postal Cancellation of China Part II pg. 503.)

2. MIXED FRANKING CHINA & HONGKONG STAMPS (BEFORE FEBRUARY 1, 1905)

Destination Switzerland

Postage rate (printed matter)

China postage

- 2c. each 2 oz.

British postage

- 2c. each 2 oz.



Printed matter sent from Canton November 24, 1899 to Basle/Switzerland. Transit by Hongkong November 25, 1899.

2. MIXED FRANKING CHINA & HONGKONG STAMPS (BEFORE FEBRUARY 1, 1905)

Destination Austria

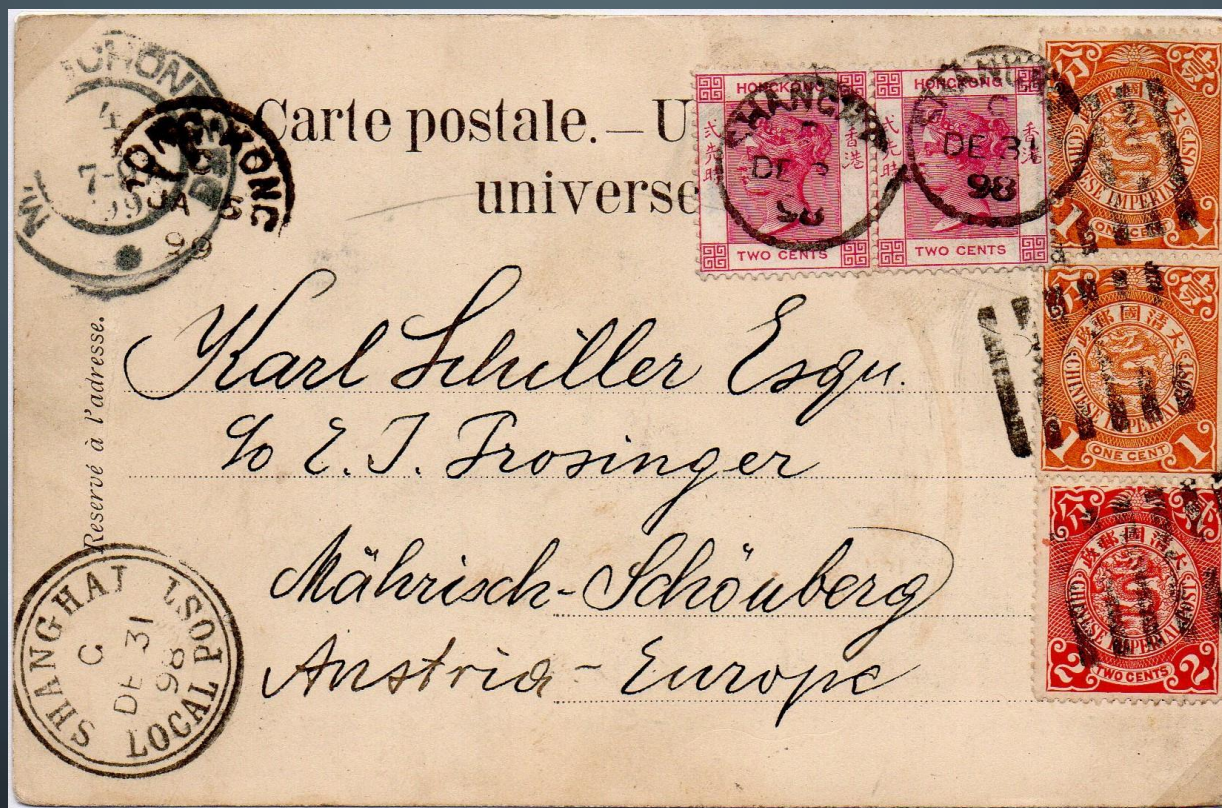
Postage rate

China postage

- 4c.

British postage

- 4c.



Postcard sent from Shanghai December 31, 1898 to Mabrich-Schönberg/Austria where it arrived February 4, 1899. Transit by Hongkong January 5, 1899.

2. MIXED FRANKING CHINA & HONGKONG STAMPS (BEFORE FEBRUARY 1, 1905)

Destination Italy

Postage rate

China postage

- 4c.

British postage

- 4c.



I.P.O.
Of Peking

Postcard sent from Peking November 15, 1899 to Venedig/Italy. Transit by Shanghai November 21 and Shanghai (British post office) November 22, 1899. It was carried by a French boat.

2. MIXED FRANKING CHINA & HONGKONG STAMPS (BEFORE FEBRUARY 1, 1905)

Destination Switzerland

Postage rate

China postage

- 4c.

British postage

- 4c.



Postal stationery with additional postage sent from Canton February 16, 1900 to Basel/Switzerland where it arrived March 17, 1900. Transit by Hongkong February 17, 1900.

2. MIXED FRANKING CHINA & HONGKONG STAMPS (BEFORE FEBRUARY 1, 1905)

Destination Belgium

Postage rate

China postage

- 4c.

British postage

- 4c.

China postage underpayment at 3c. thus taxation (« T ») and underpayment for Hongkong at 2c.



Postcard sent from Shanghai July 6, 1901 to Antwerpen = Anvers / Belgium where it arrived August 17, 1901.

Transit by Shanghai (British post office) July 11, 1901.

2. MIXED FRANKING CHINA & HONGKONG STAMPS (BEFORE FEBRUARY 1, 1905)

Destination Sweden

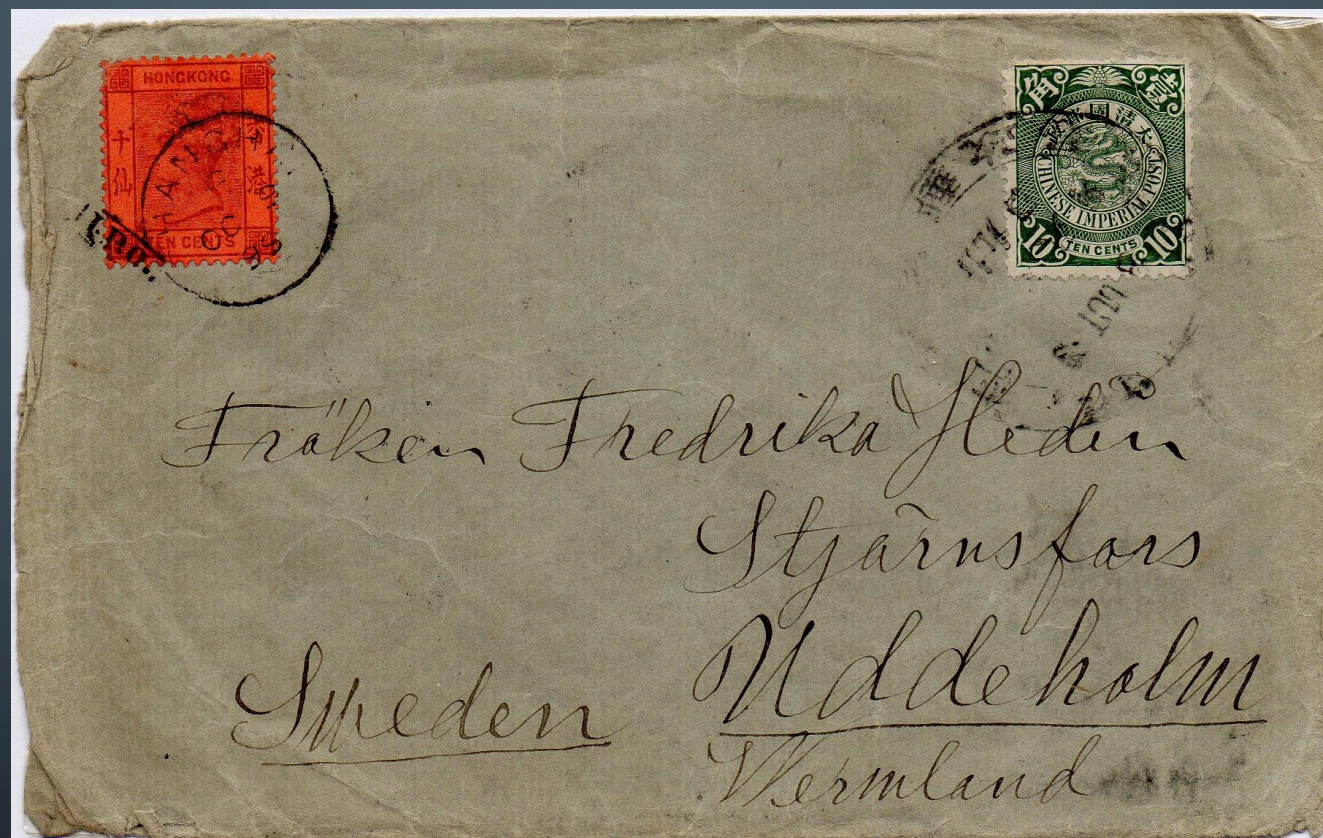
Postage rate

China postage

- 10c./ 1/2 oz.

British postage

- 10c./ 1/2 oz.



Letter sent from Peking October 3, 1899 to Uddeholm/Sweden. Transit by Peking October 4, Shanghai October 9, Shanghai (British post office) October 9 and Hongkong October 12, 1899.

2. MIXED FRANKING CHINA & HONGKONG STAMPS (BEFORE FEBRUARY 1, 1905)

Destination Ceylon

Postage rate

China postage

- 10c./ 1/2 oz.

British postage

- 10c./ 1/2 oz.



Letter sent from Tientsin May 8, 1900 to Nawalapitiya/Ceylon where it arrived June 2, 1900. Transit by Shanghai May 14, 1900, Shanghai (British post office) May 15, 1900 and Colombo/Ceylon June 2, 1900.

2. MIXED FRANKING CHINA & HONGKONG STAMPS (BEFORE FEBRUARY 1, 1905)

Destination Sweden

Postage rate

China postage

- 10c./ ½ oz.

British postage

- 10c./ ½ oz.



Security chop
« C.I.M. » (in purple)
of the China Inland
Mission

Letter sent from Hankow June 9, 1899 to Göteborg/Sweden where it arrived July 19, 1899. Transit by Shanghai June 11, Shanghai (British post office) June 12 and Hongkong September 16, 1899.

2. MIXED FRANKING CHINA & HONGKONG STAMPS (BEFORE FEBRUARY 1, 1905)

Destination France

Postage rate

China postage

- 10c./ 1/2 oz.

British postage

- 10c./ 1/2 oz.



Letter sent from Peking September 15, 1899 to St Genis-Laval/France where it arrived October 29, 1899.

Transit by Shanghai September 21, Shanghai (British post office) September 22 and Hongkong September 29.

2. MIXED FRANKING CHINA & HONGKONG STAMPS (BEFORE FEBRUARY 1, 1905)

Destination Scotland/UK

Postage rate

China postage

- 10c./ 1/2 oz.
- 10c. Registration

British postage

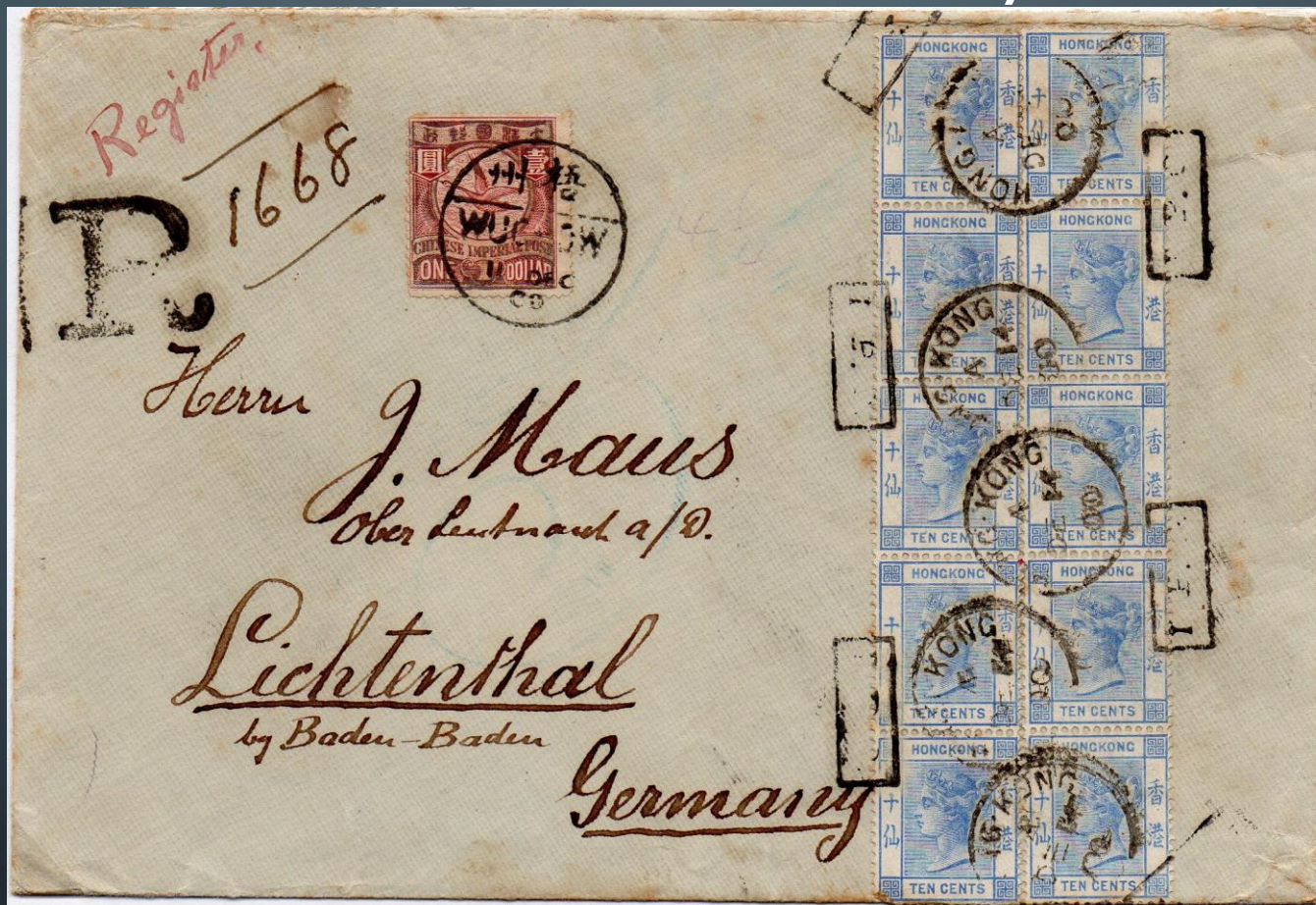
- 10c./ 1/2 oz.
- 10c. Registration



Registered letter sent from Hankow May 15, 1901 to Dalkeith/Scotland/UK where it arrived June 25, 1901. Transit by Shanghai May 18, Shanghai (British post office) November 20, London-Registered June 24 and Edinburgh in June.

2. MIXED FRANKING CHINA & HONGKONG STAMPS (BEFORE FEBRUARY 1, 1905)

Destination Germany



Postage rate

China postage

- 10c./ 1/2 oz. (9x)
- 10c. Registration

British postage

- 10c./ 1/2 oz. (9x)
- 10c. Registration

Registered letter sent from Wuchow December 11, 1900 to Lichtenthal/Germany where it arrived January 17, 1900. Transit by Canton in December 1900 and Hongkong December 14, 1900.

2. MIXED FRANKING CHINA & HONGKONG STAMPS (BEFORE FEBRUARY 1, 1905)

Destination Germany

Postage rate

China postage

- 10c./ 1/2 oz.
- 2c./ 1/2 oz. – winter rate

British postage

- 10c./ 1/2 oz.



Letter sent from Peking in December 1898 to Crefeld/Germany where it arrived January 29, 1899. Transit by Shanghai December 22, 1898 and Hongkong December 30, 1898.