

NEIGHBORING MAIL

« COURRIER LIMITROPHE »

1886-1910

MAIL FROM CONGO TO ITS NEIGHBORS, SPECIAL RATE?

YES THERE WAS ONE. SELDOM SEEN. NEVERTHELESS THIS RATE WAS CURRENT FROM 1886 TO 1910, THUS DURING 22 YEARS.

WE CUT THE 22 YEARS IN 4 PERIODS, DEPENDING OF RATES AND THE LIMITS OF THE NEIGHBORING COUNTRIES AREA.

- 1ST JANUARY 1886 – 24TH MARCH 1889
- 25TH MARCH 1889 – 31ST MARCH 1897
- 1ST APRIL 1897 – 31ST DECEMBER 1898
- 1ST JANUARY 1899 – 31ST MARCH 1910



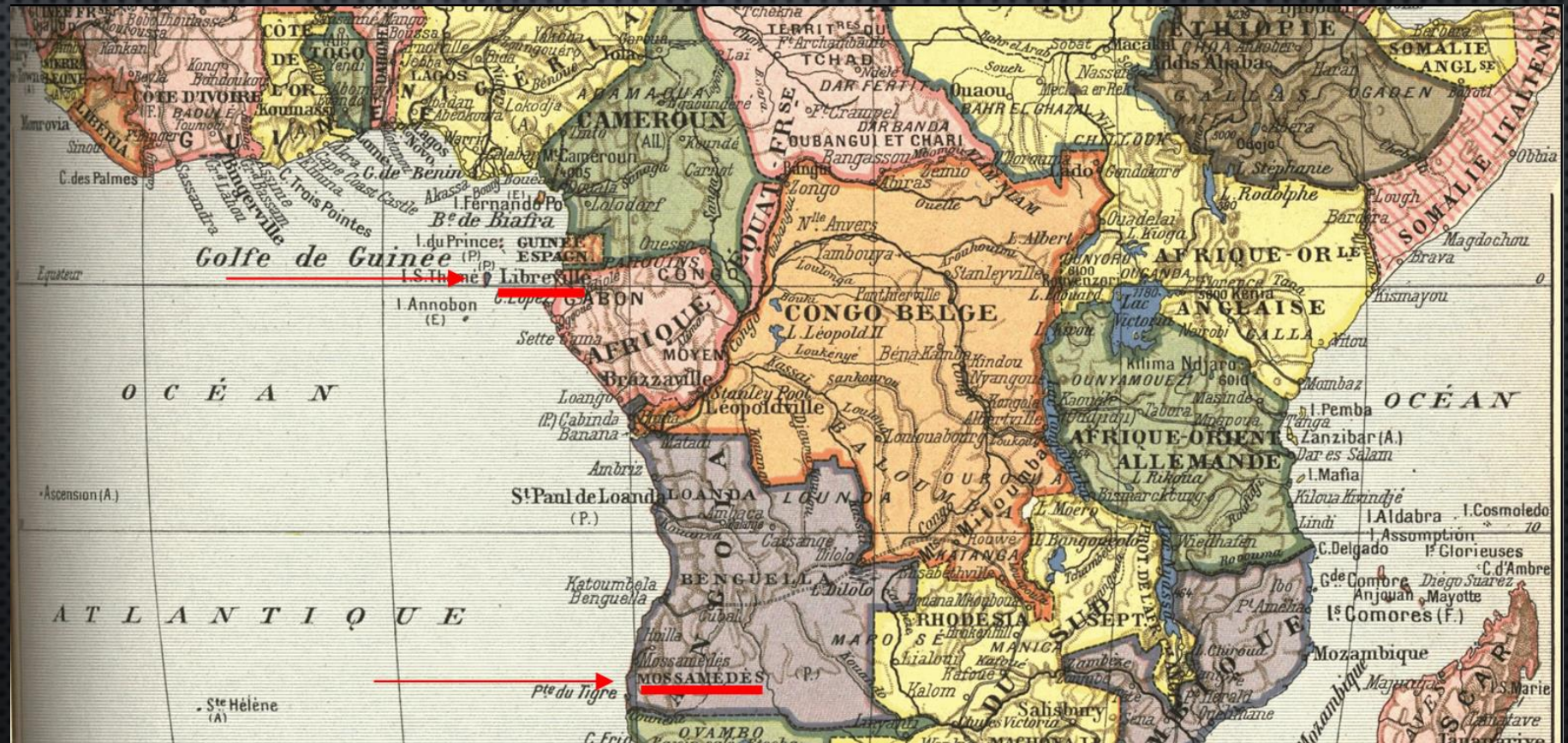
1ST JANUARY 1886 – 24TH MARCH 1889

The area in which the mail enjoys the neighboring countries rate applies is defined as follows:

« mail to neighboring colonies as far as and including Libreville to the north and Mossamedes to the south, have the same postage rate than those for the internal mail ».

the neighboring countries rate is the same for internal mail, so:

- postal stationery: 15c.
- cover: 25c. / 15gr.
- business printed matter, printed matter, sample goods: 5c./50gr.
- Registration: 25c.



1ST JANUARY 1886 – 24TH MARCH 1889

POSTAL HISTORY

No example (currently)

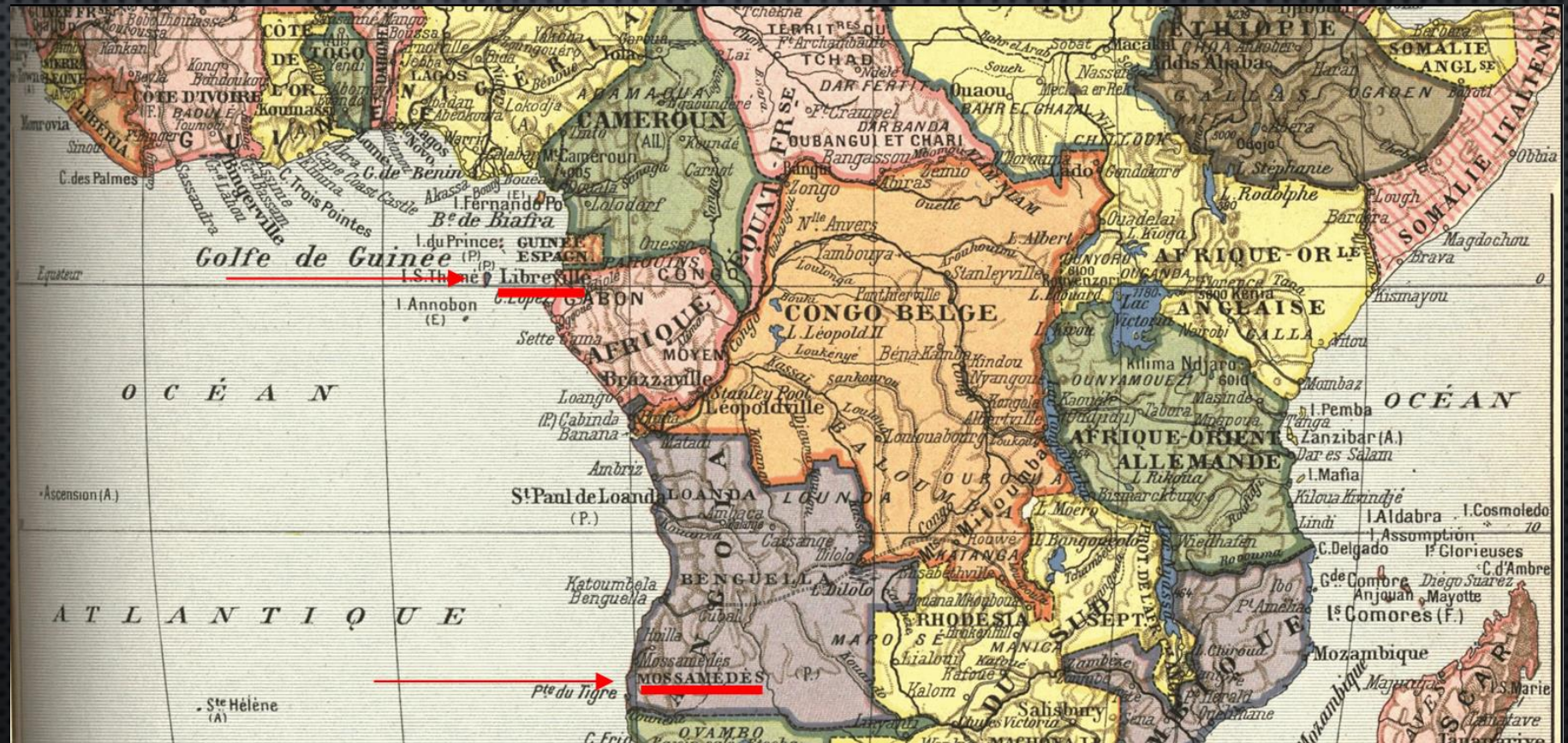
25TH MARCH 1889 – 31ST MARCH 1897

The area in which the mail enjoys the neighboring countries rate applies is defined as follows:

« mail to neighboring colonies as far as and including Libreville to the north and Mossamedes to the south, have the same postage rate than those for the internal mail ».

the neighboring countries rate is the same for internal mail, so:

- postal stationery: 10c.
- postal stationery with reply card : 15c. (5c. Request part + 10c. Answer part)
- cover: 25c. / 15gr.
- business printed matter, printed matter, sample goods: 5c./50gr.
- Registration: 25c.



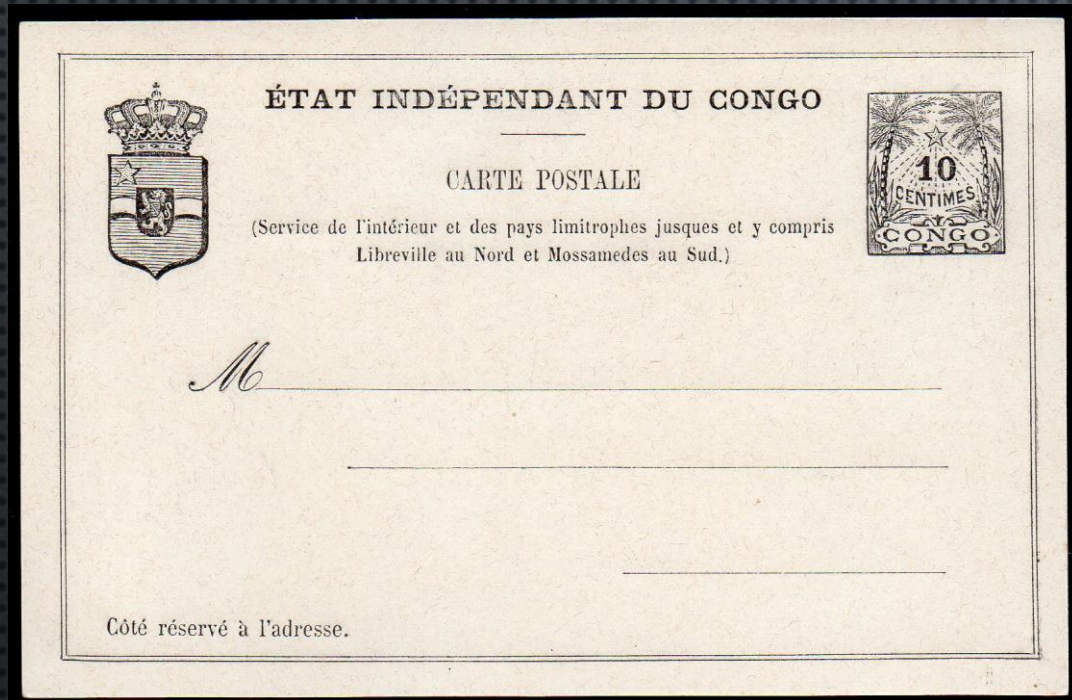
25TH MARCH 1889 – 31ST MARCH 1897
POSTAL STATIONERIES - NEW ISSUES

examples of the different postal stationeries for inland mail and neighboring countries, printed during this period. They all bear the note:

« mail to neighboring colonies as far as and including Libreville to the north and Mossamedes to the south ».

(Service de l'intérieur et des pays limitrophes jusques et y compris
Libreville au Nord et Mossamedes au Sud.)

25TH MARCH 1889 – 31ST MARCH 1897
POSTAL STATIONERIES (SIMPLE CARD)



ÉTAT INDÉPENDANT DU CONGO

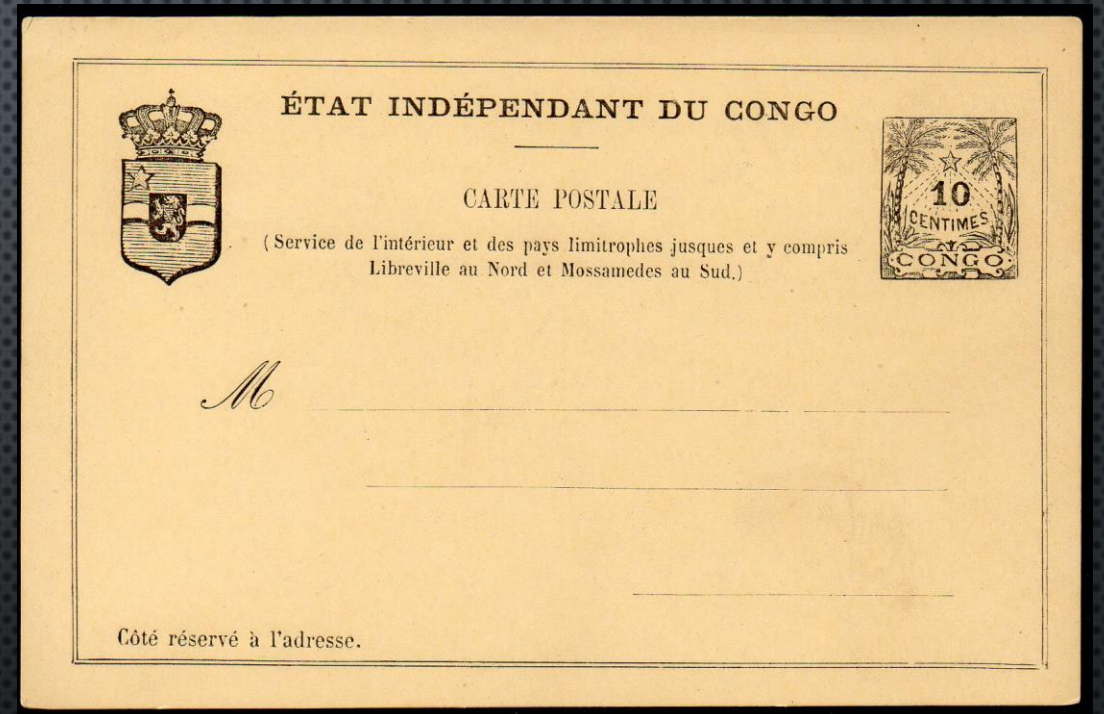
CARTE POSTALE

(Service de l'intérieur et des pays limitrophes jusques et y compris
Libreville au Nord et Mossamedes au Sud.)

M

Côté réservé à l'adresse.

Postal stationery (Stibbe n°4) at 10c. – black on light grey.
period of use: March 1st, 1889 to December 31th, 1900.



ÉTAT INDÉPENDANT DU CONGO

CARTE POSTALE

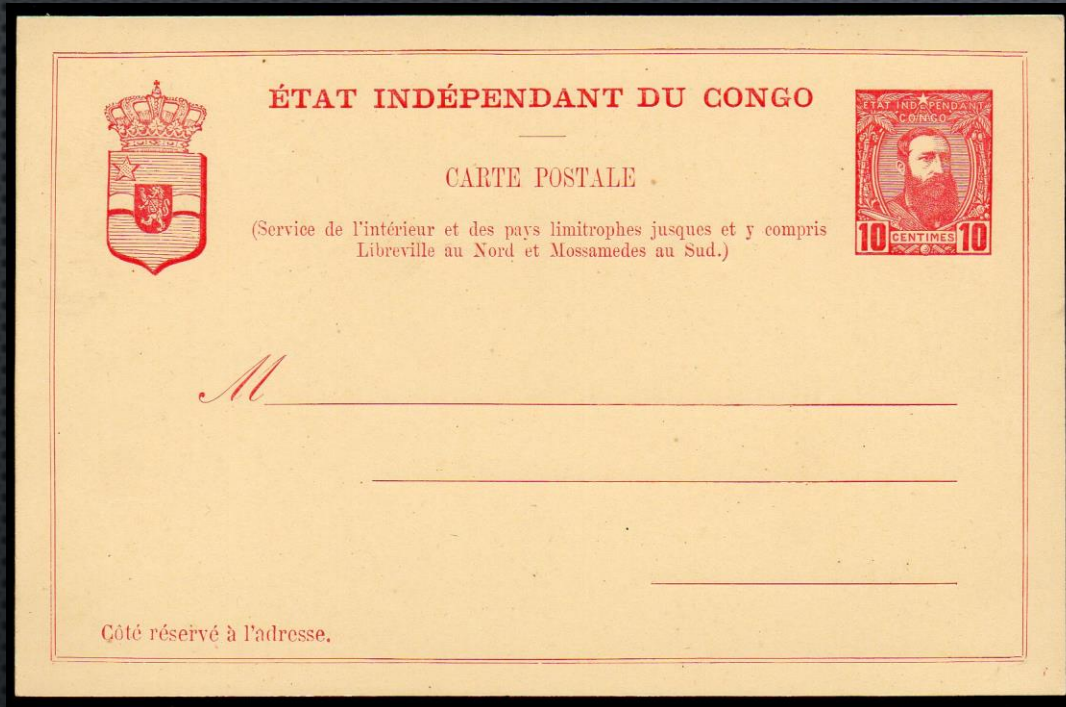
(Service de l'intérieur et des pays limitrophes jusques et y compris
Libreville au Nord et Mossamedes au Sud.)

M

Côté réservé à l'adresse.

Postal stationery (Stibbe n°8) at 10c. – black on buff.
period of use: July 1892 to December 31th, 1900.

25TH MARCH 1889 – 31ST MARCH 1897
POSTAL STATIONERIES (SIMPLE CARD)

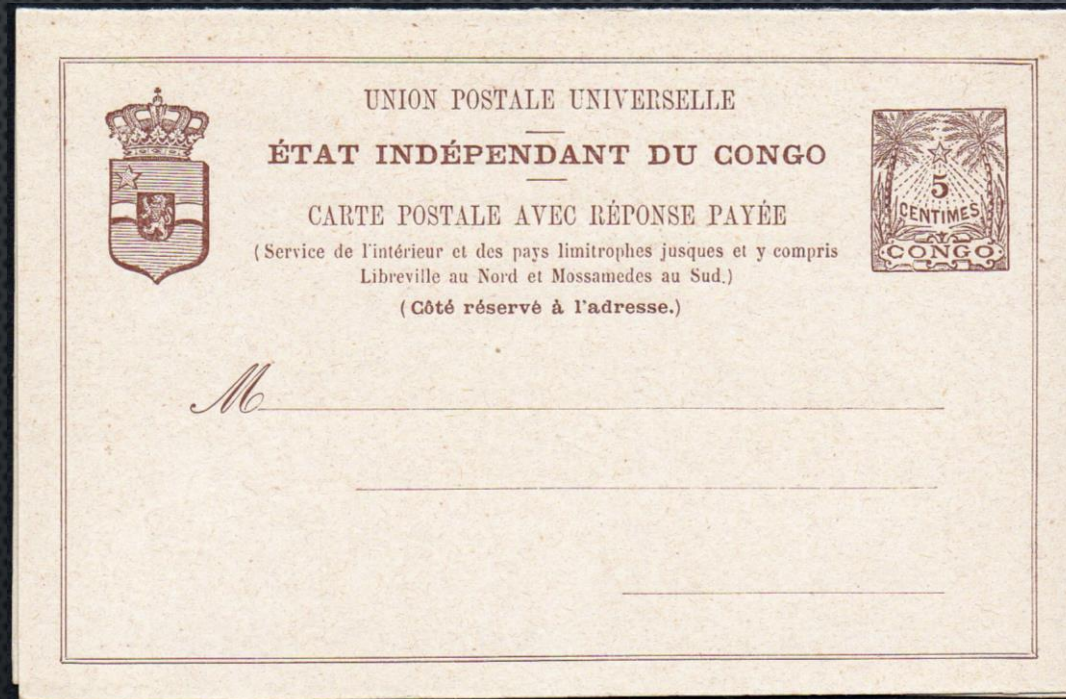


Postal stationery (Stibbe n°10) at 10c. – carmine on yellow
period of use: October 25th, 1892 to December 31th, 1900



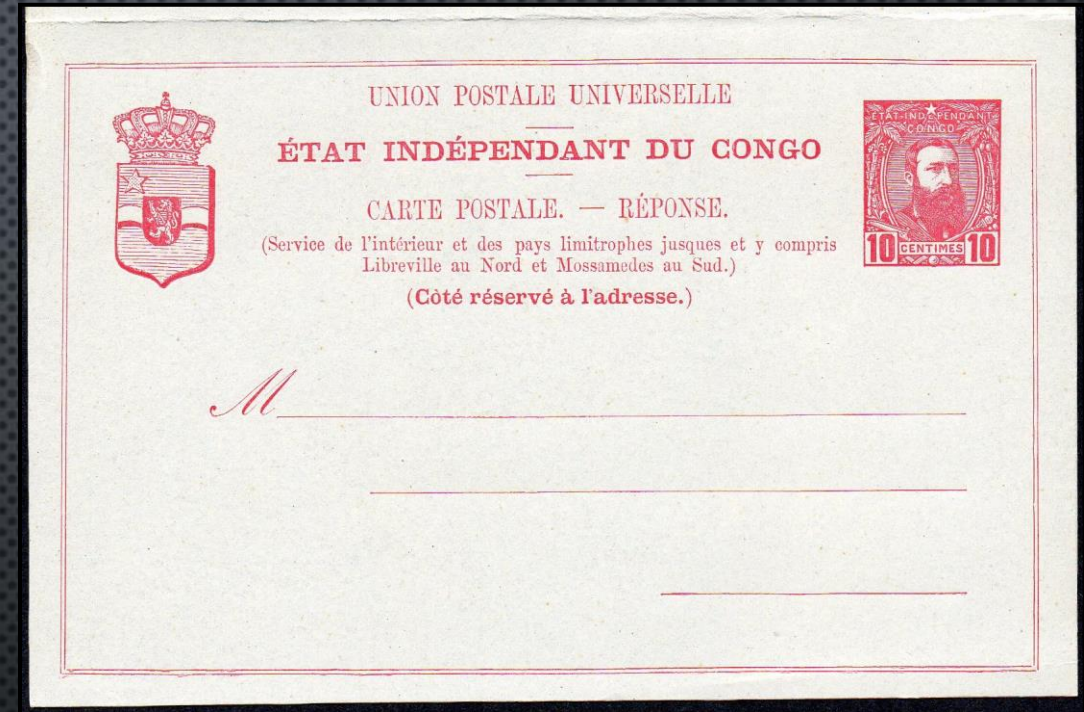
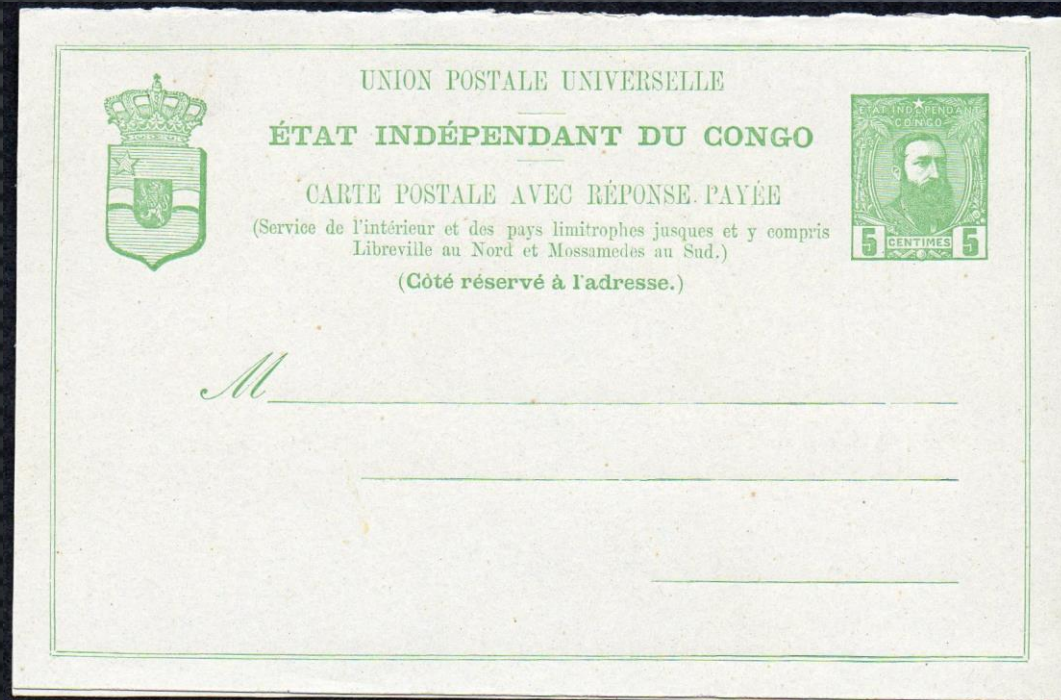
Postal stationery (Stibbe n°14) at 10c. – orange-red on yellow.
period of use: March 1897 to July 31th, 1909.

25TH MARCH 1889 – 31ST MARCH 1897
POSTAL STATIONERIES (WITH REPLY CARD)



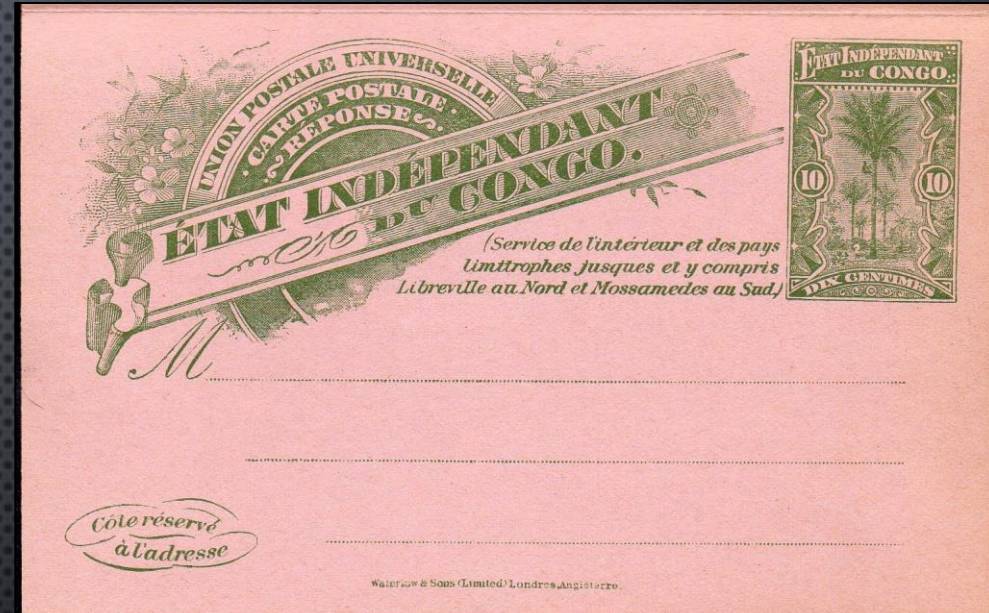
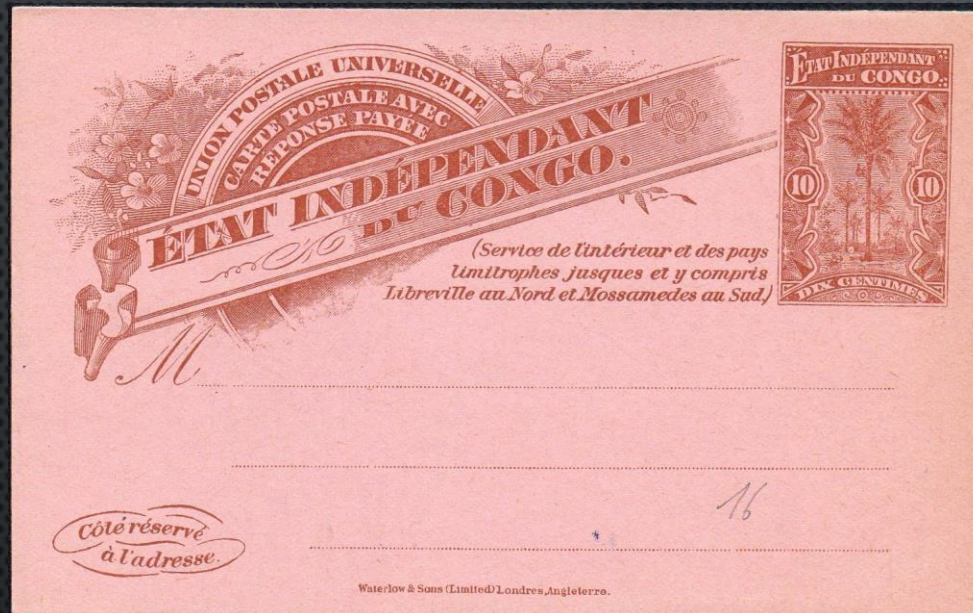
Postal stationery with reply card (Stibbe n°6) at 5c. + 10c. – brown on light grey.
period of use: March 1st, 1889 to December 31th, 1900.

25TH MARCH 1889 – 31ST MARCH 1897
POSTAL STATIONERIES (WITH REPLY CARD)



Postal stationery with reply card (Stibbe n°12)at 5c. + 10c. – green, carmine on blue.
period of use: January 1894 to December 31th, 1900.

25TH MARCH 1889 – 31ST MARCH 1897
POSTAL STATIONERIES (WITH REPLY CARD)

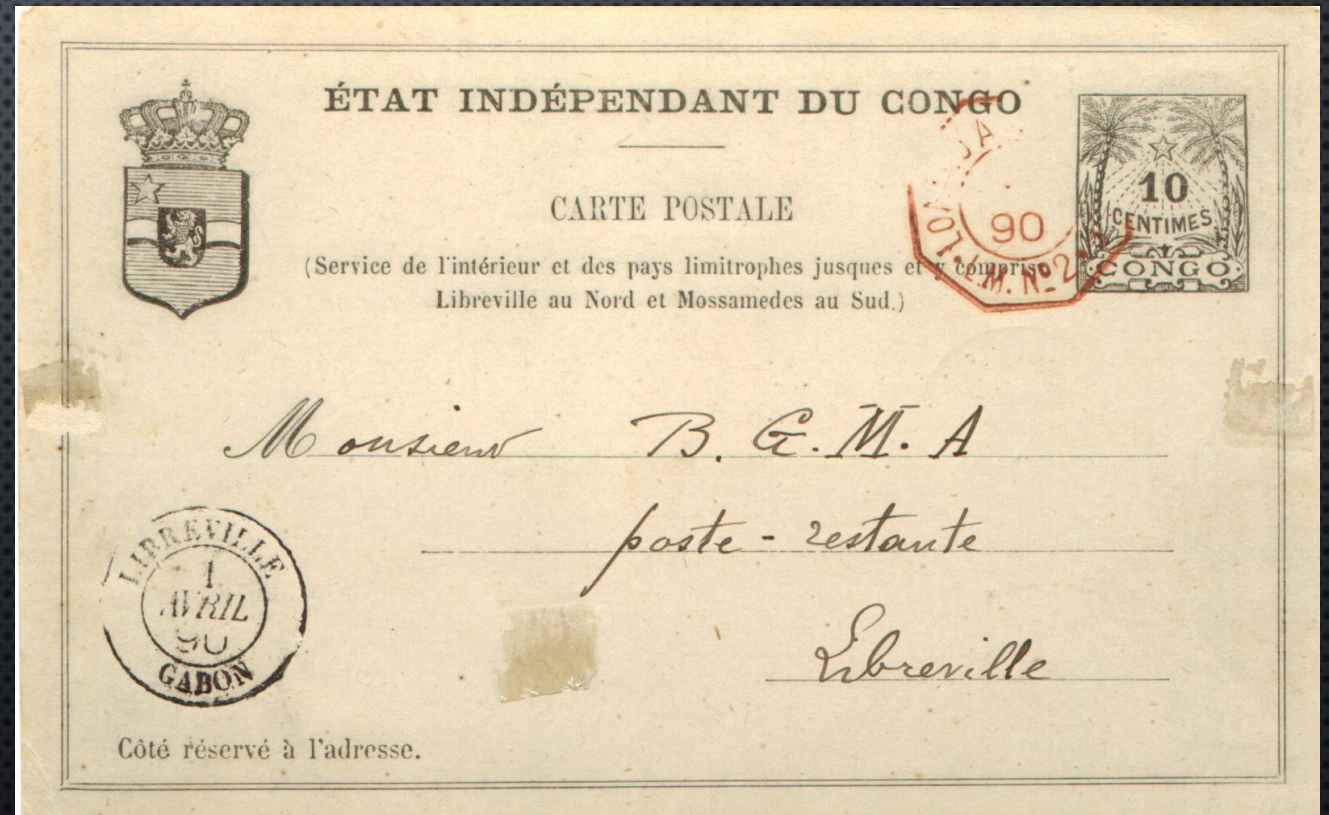


Postal stationery with reply card (Stibbe n°16) at 10c. + 10c. – red-brown and green on deep pink.
period of use: March 1897 to July 31th, 1909.

25TH MARCH 1889 – 31ST MARCH 1897 POSTAL HISTORY

Postal stationery n°4, posted on board a ship of the line "Loango to Marseille / L. M. 2" in 1890 to Libreville / Gabon where it arrived on April 1st 1890.

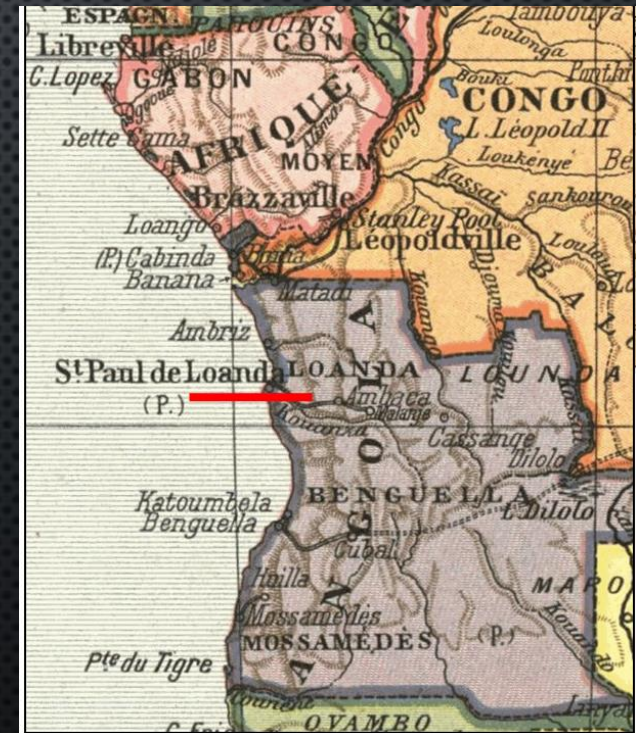
Rate: postal stationery neighboring countries rate = 10c.



25TH MARCH 1889 – 31ST MARCH 1897 POSTAL HISTORY

Postal stationery n°4 posted at Banana on August 26th, 1890 to Loanda / Angola where it arrived on August 29th, 1890. Transit by Banana on August 27th, 1890.

Rate: postal stationery neighboring countries rate = 10c.



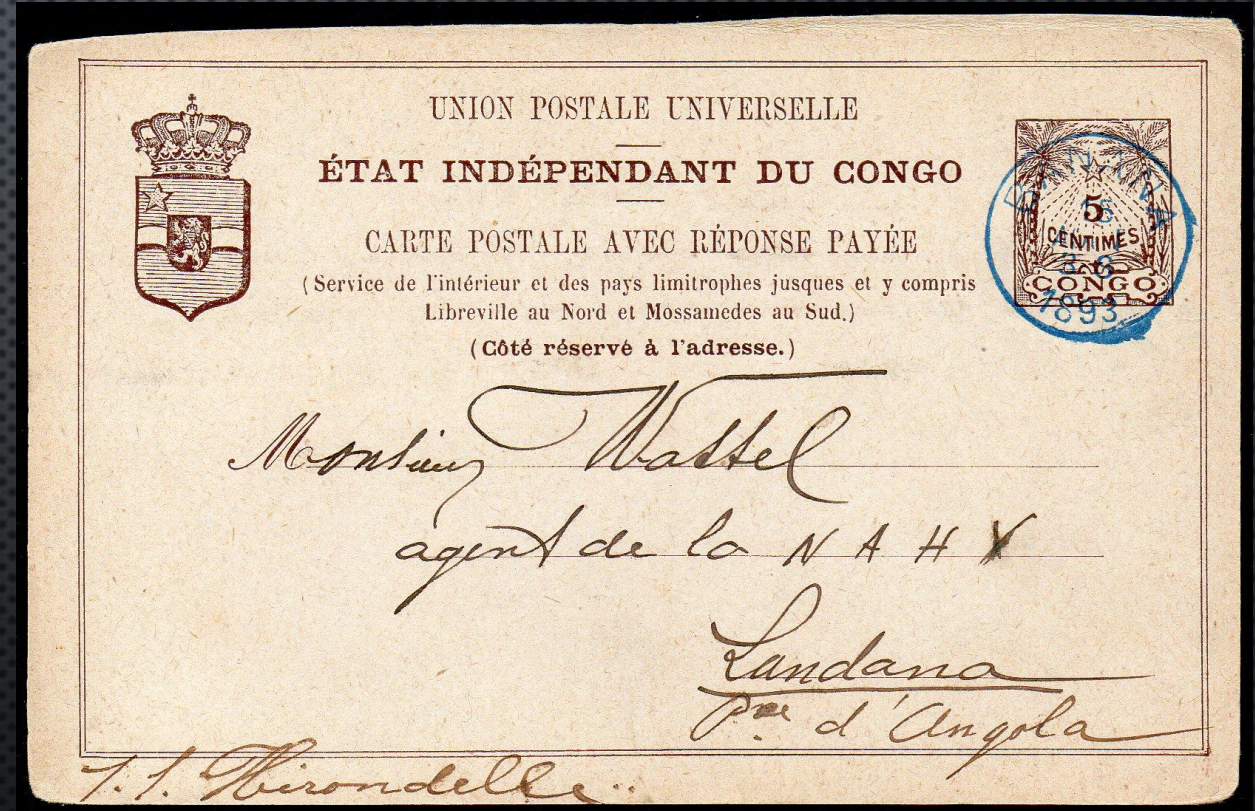
25TH MARCH 1889 – 31ST MARCH 1897 POSTAL HISTORY



Postal stationery n°6 with reply card, back teared to obtain the 10c. of reply card on front, used from Banana May 30th, 1890 to Loanda / Angola where it arrived on June 2nd , 1890. Demand card (at 5c. – reduced rate) on the back not used.

We suppose the sender was not sure to use the reduced rate at 5c. to neighboring country and preferred to use the current rate at 10c. like the other postal stationeries.

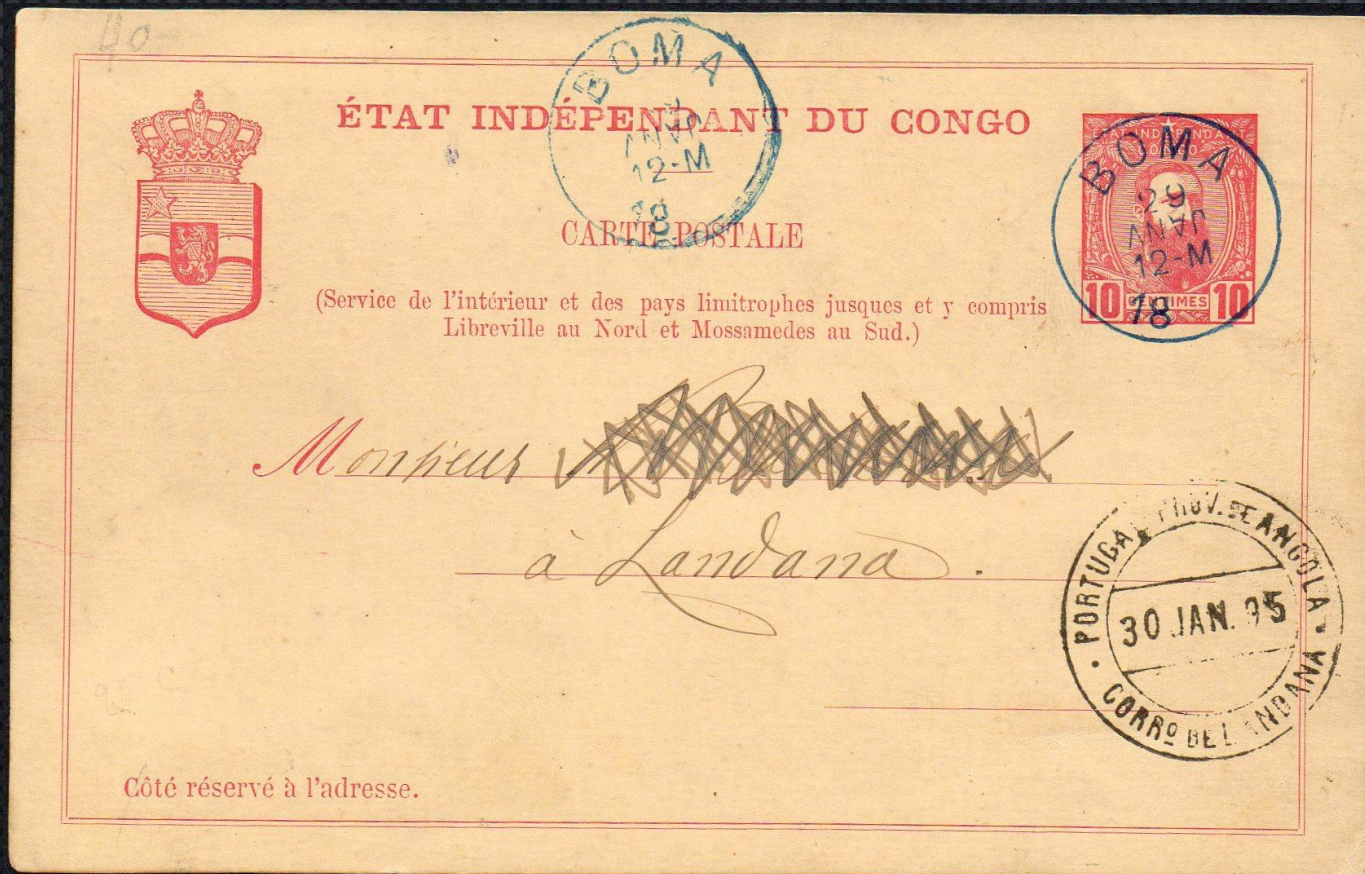
25TH MARCH 1889 – 31ST MARCH 1897 POSTAL HISTORY



Postal stationery n°10 from Banana on January 29th, 1895 to Landana / Enclave of Cabinda where it arrived on January 30th, 1895.

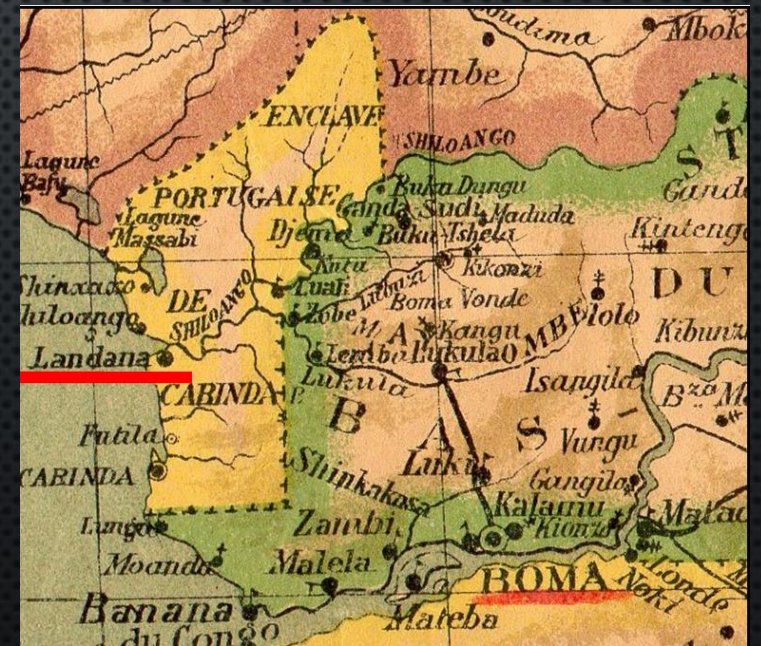
Rate: postal stationery with reply card neighboring countries rate = 5c.

25TH MARCH 1889 – 31ST MARCH 1897 POSTAL HISTORY



Postal stationery n°10 from Banana on January 29th 1895 to Landana / Enclave of Cabinda where it arrived on January 30th 1895.

Rate: postal stationery neighboring countries rate = 10c.

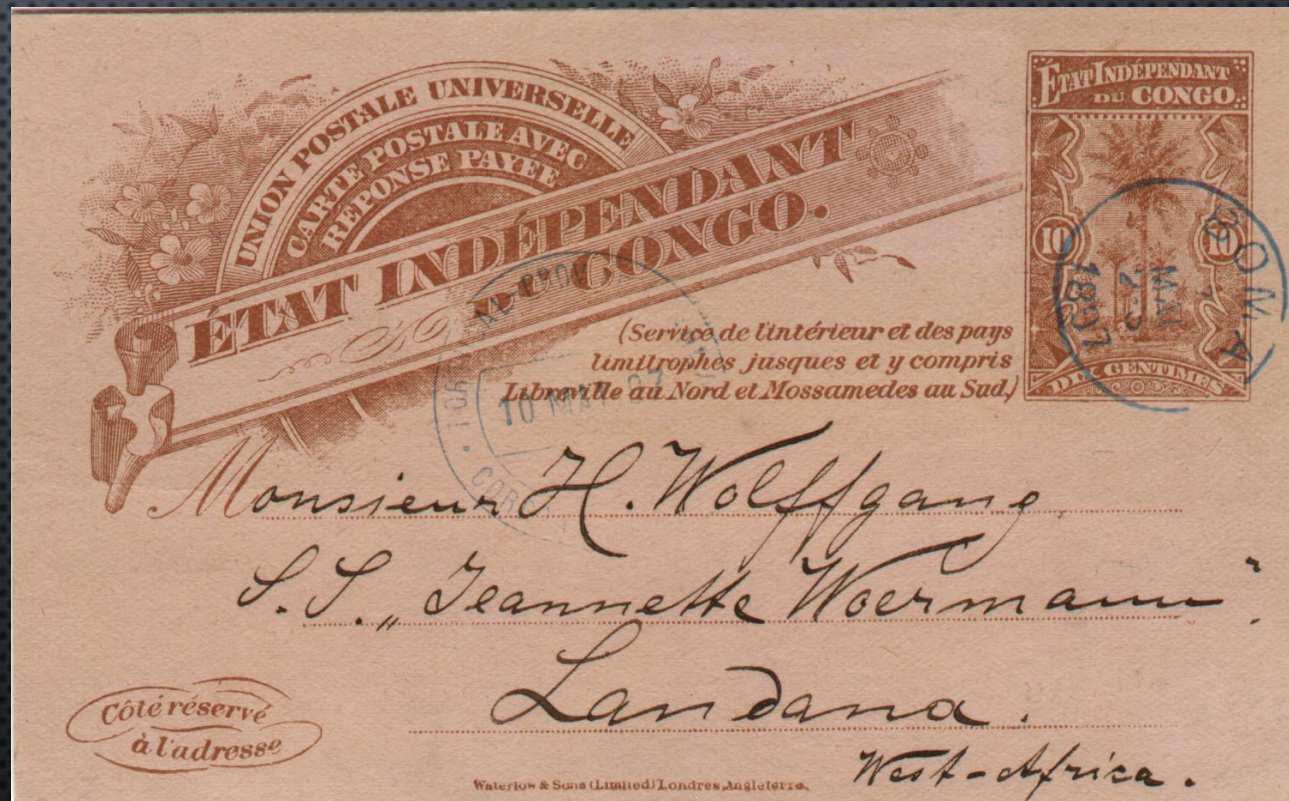


1ST APRIL 1897 – 31ST DECEMBER 1898 POSTAL HISTORY

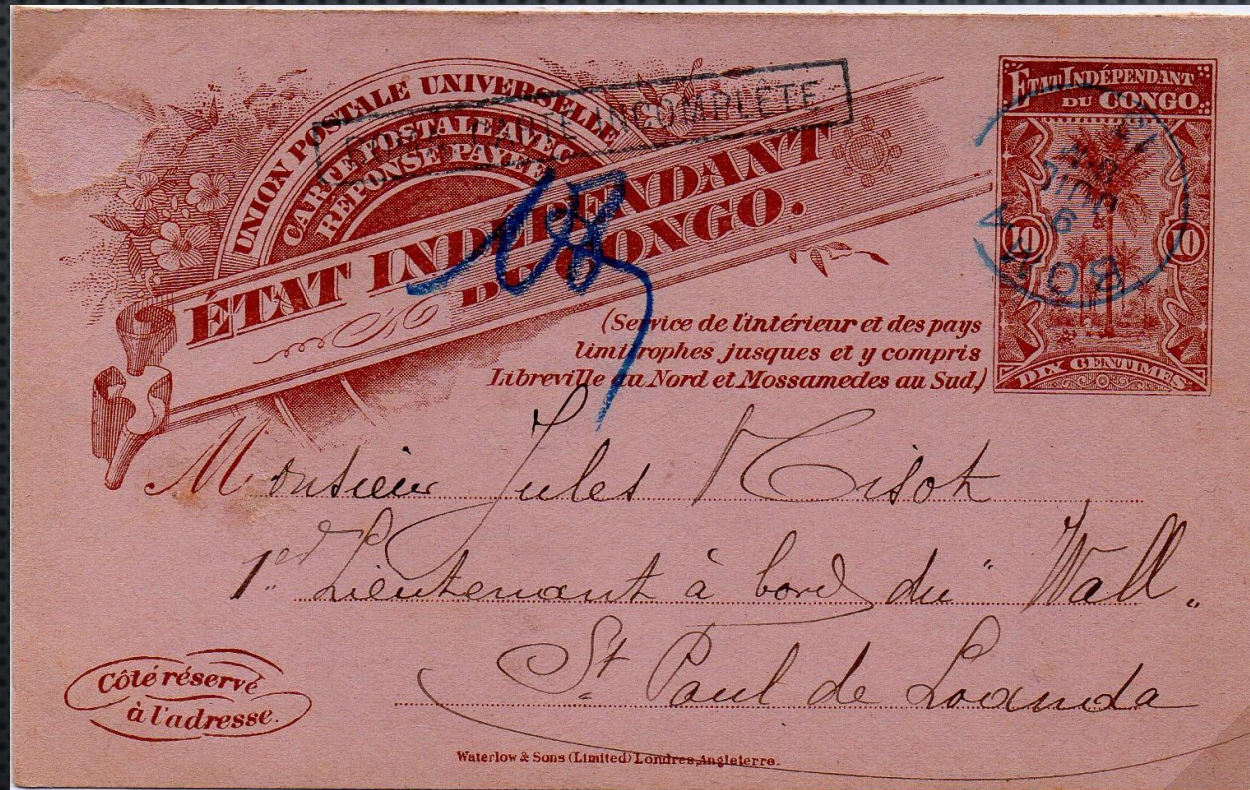


Postal stationery n°16 with reply card from Boma on May 7th, 1897 to a boat in the harbour of Landana / Enclave of Cabinda.

Rate: postal stationery neighboring countries rate = 10c.



1ST APRIL 1897 – 31ST DECEMBER 1898
POSTAL HISTORY



Postal stationery n°16 reply card (without request card) from Boma on June 9th, 1898 to St Paul de Loanda/ Angola.

Straight linear mark BOMA CARTE INCOMPLETE + postman paraph.

Rate: postal stationery neighboring countries rate = 10c.

1ST APRIL 1897 – 31ST DECEMBER 1898
POSTAL HISTORY



Postal stationery n°16 reply card (without request card) from Banana on September 21st, 1898 to Cap Lopez / French Congo. Straight linear mark BANANA CARTE INCOMPLETE.

Rate: postal stationery neighboring countries rate = 10c.

1ST JANUARY 1899 – 31ST MARCH 1910
POSTAL STATIONERIES – NEW ISSUES

examples of the different postal stationeries for inland mail and neighboring countries, printed during this period. They all bear the note:

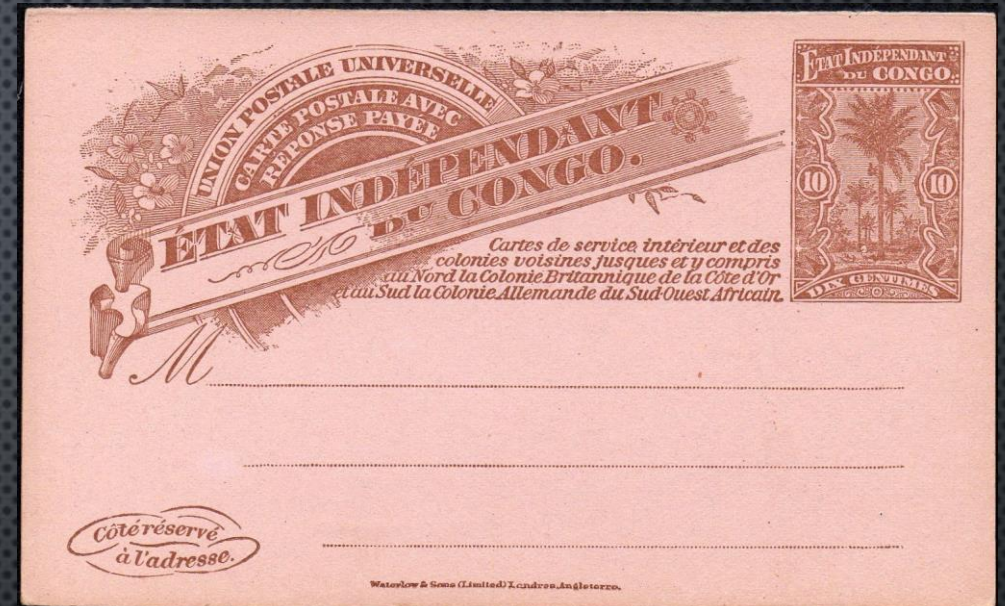
«cards for inland and mail to neighboring colonies as far as and including to the north the British Colony of the Gold Coast and to the South, the German colony of South-West Africa.».



1ST JANUARY 1899 – 31ST MARCH 1910 POSTAL STATIONERIES



Postal stationery (Stibbe n°18) at 10c. – red on dark brown.
period of use: 1900 to July 31st, 1909.



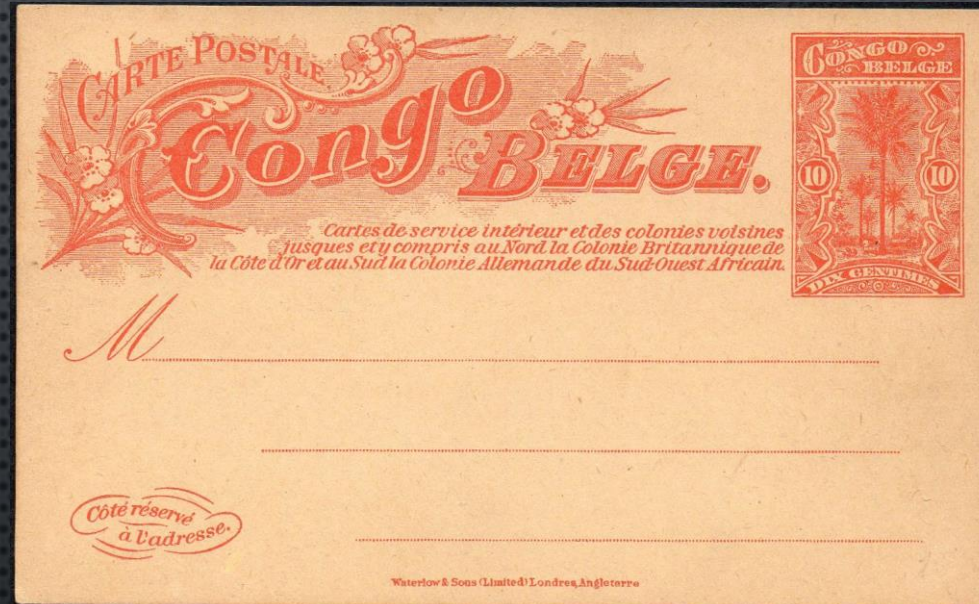
Postal stationery with
reply card (Stibbe
n°19) at 10c. + 10c. –
red-brown and
green on deep pink.

period of use: 1900
to July 31st, 1909.

Cartes de service intérieur et des colonies voisines jusques et y compris au Nord la Colonie Britannique de la Côte d'Or et au Sud la Colonie Allemande du Sud-Ouest Africain.

Cartes de service intérieur et des colonies voisines jusques et y compris au Nord la Colonie Britannique de la Côte d'Or et au Sud la Colonie Allemande du Sud-Ouest Africain.

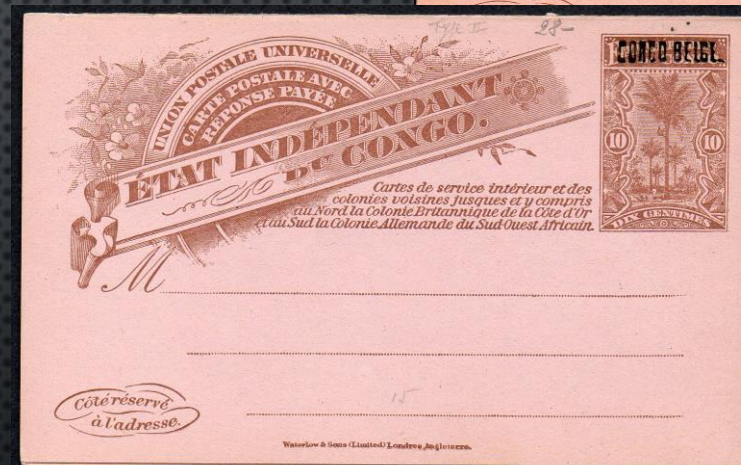
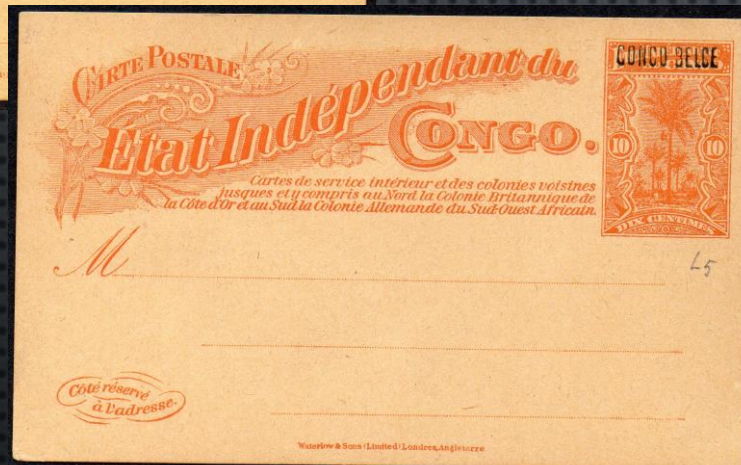
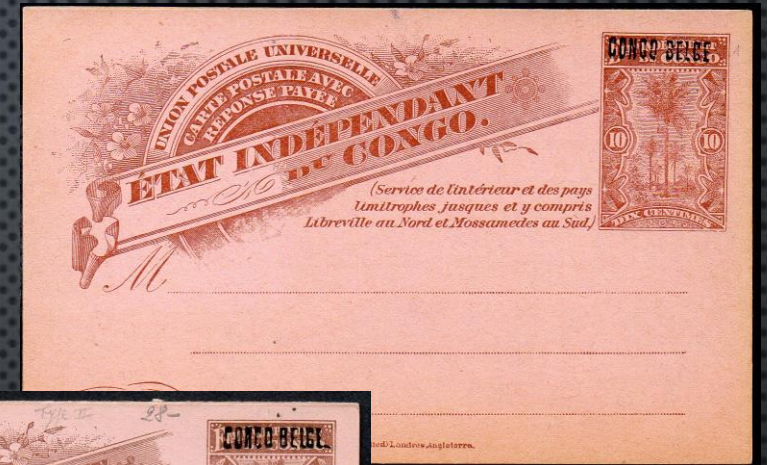
1ST JANUARY 1899 – 31ST MARCH 1910
POSTAL STATIONERIES



Postal stationery (Stibbe n°26) at 10c. – bright red on yellow.
period of use: June 15th, 1909 to December 31st, 1910.

*Cartes de service intérieur et des colonies voisines
jusques et y compris au Nord la Colonie Britannique de
la Côte d'Or et au Sud la Colonie Allemande du Sud-Ouest Africain.*

1ST JANUARY 1899 – 31ST MARCH 1910 POSTAL STATIONERIES



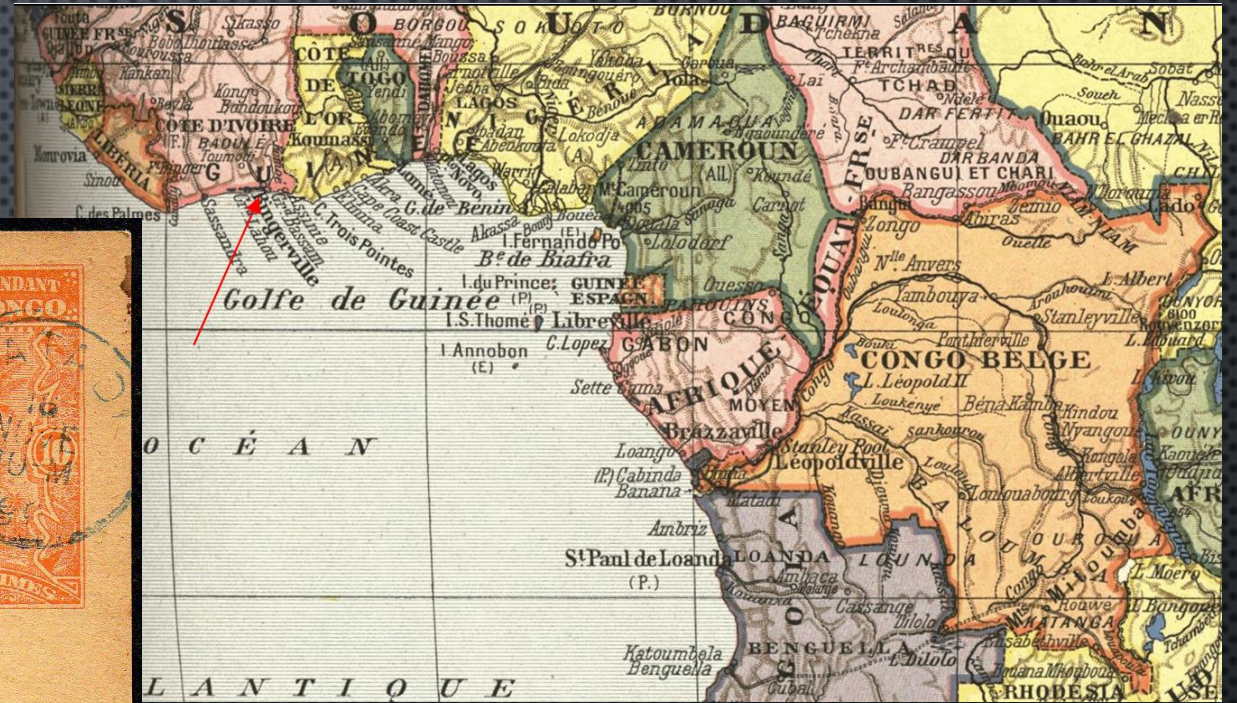
POSTAL STATIONERY No. 14,16,18,19 WERE OVERPRINTED "CONGO BELGE" IN 1909 BECAUSE THE CONGO FREE STATE BECAME A TERRITORY ADMINISTERED BY BELGIUM. HOWEVER (AT THIS TIME) WE HAVE NEVER CAME ACROSS THESE POSTAL STATIONERIES USED TO NEIGHBORING COUNTRIES SO WE DID NOT BOTHER TO PRESENT THEM IN DETAIL. THERE ARE VARIOUS TYPES OF OVERPRINT. BUT FOR MORE INFORMATION WE RECOMMEND THE BOOK OF JACQUES STIBBE ABOUT POSTAL STATIONERY OF CONGO.

1ST JANUARY 1899 – 31ST MARCH 1910
POSTAL STATIONERIES

NOTE:

ALL POSTAL STATIONERIES ISSUED DURING THE 2ND PERIOD COULD BE USED DURING THIS 4TH PERIOD. IN SPITE OF THE LENGTHENING OF THE ZONE COVERED BY THIS SPECIAL RATE.

1ST JANUARY 1899 – 31ST MARCH 1910 POSTAL HISTORY



Postal stationery n°14 from Matadi on November 18th, 1900 to Grand Bassam / Ivory Coast where it arrived on December 4th, 1900. The postal stationery was carried by the ship (Maranhao) of the line « Loango à Bordeaux LL n°1 » on November 18th, 1900.

Rate: postal stationery neighboring countries rate = 10c.

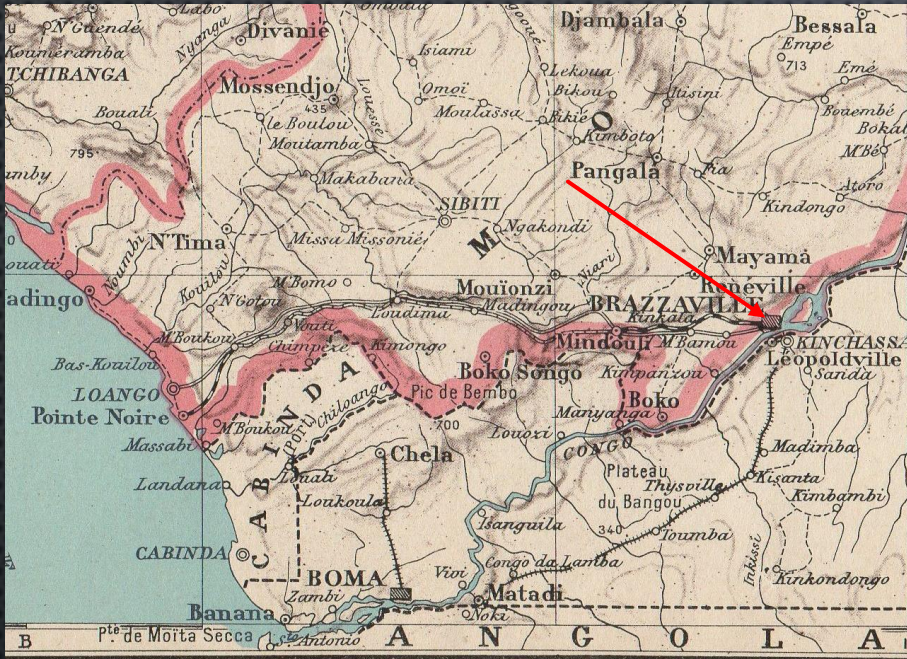
1ST JANUARY 1899 – 31ST MARCH 1910
POSTAL HISTORY



Postal stationery n°14 from Matadi on November 17th, 1900 to Libreville/French Congo where it arrived on November 24th, 1900. The postal stationery was carried by the ship (Maranhao) of the line « Loango à Bordeaux LL n°1 » on November 18th, 1900.

Rate: postal stationery neighboring countries rate = 10c.

1ST JANUARY 1899 – 31ST MARCH 1910 POSTAL HISTORY

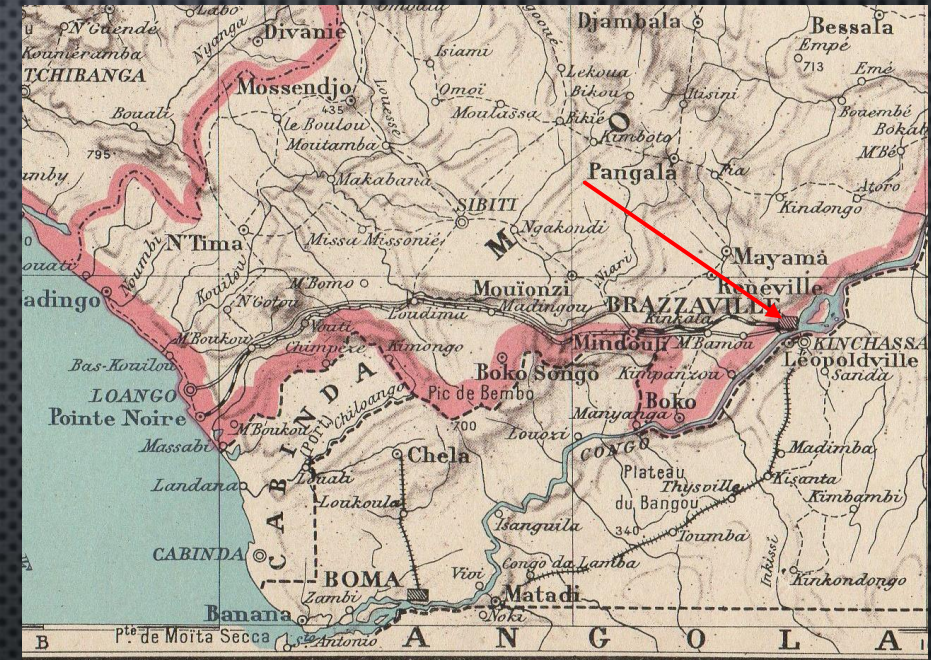


Postal stationery n°16 (without answer card) from Leopoldville on October 3rd, 1900 to Brazzaville / French Congo where it arrived on October 4th, 1900.

Rate: postal stationery neighboring countries rate = 10c.



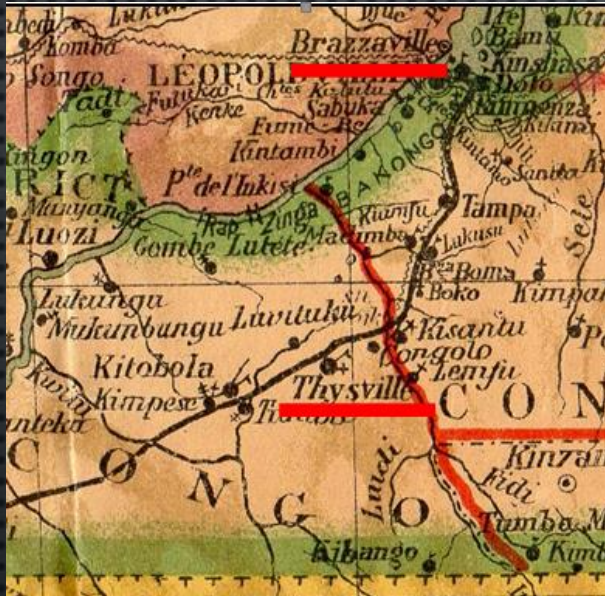
1ST JANUARY 1899 – 31ST MARCH 1910 POSTAL HISTORY



Postal stationery n°18 from Matadi on October 20th, 1902 to Brazzaville/French Congo where it arrived on October 24th, 1902. The postal stationery was redirected to Tourcoing / France.

Rate: postal stationery neighboring countries rate = 10c.

1ST JANUARY 1899 – 31ST MARCH 1910 POSTAL HISTORY



Postal stationery n°18 from Thysville on September 20th, 1907 to Brazzaville/French Congo where it arrived on September 21st, 1907.

Rate: postal stationery neighboring countries rate = 10c.



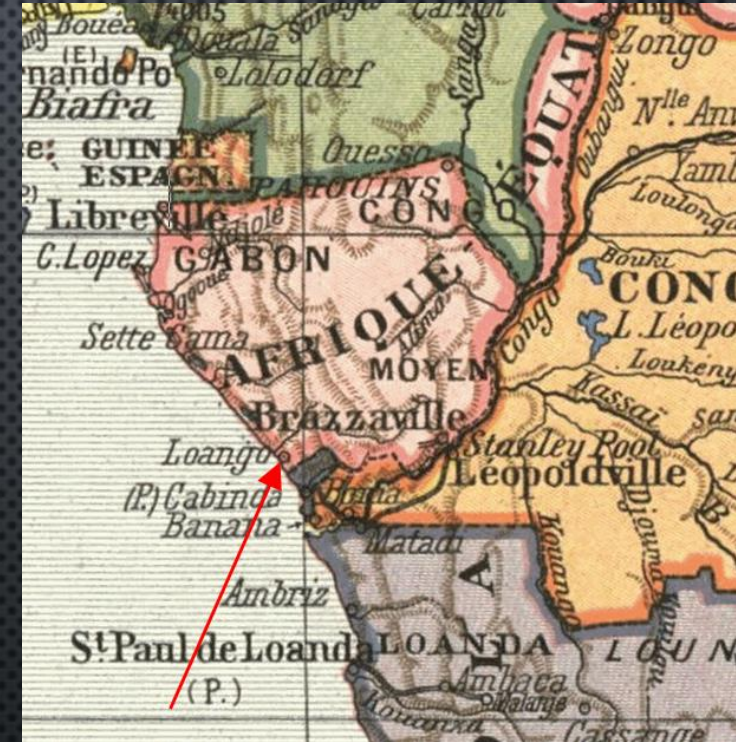
1ST JANUARY 1899 – 31ST MARCH 1910 POSTAL HISTORY



Post card written on April 7th, 1907 posted at Leopoldville on April 24th, 1907 to Brazzaville / French Congo where it arrived April 26th.

Rate: post card printed matter (less than 5 words) neighboring countries rate = 5c.

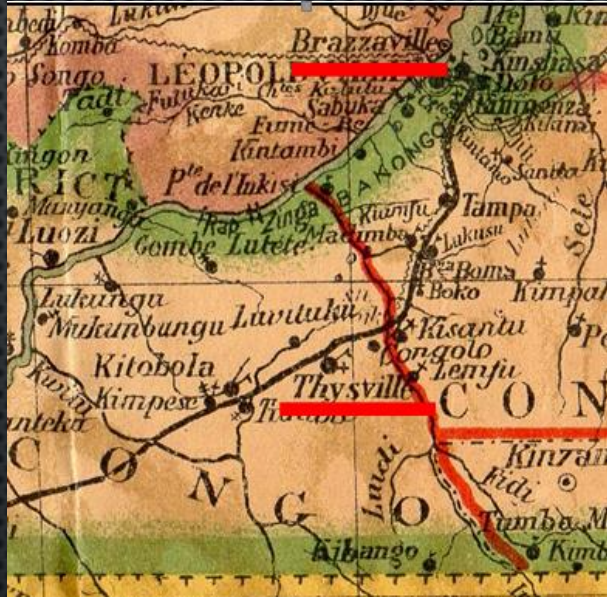
1ST JANUARY 1899 – 31ST MARCH 1910 POSTAL HISTORY



Post card from Boma on December 14th, 1905 to Loango / French Congo where it arrived on December 17th, 1905.
Via the ship of the French maritime line Matadi at Bordeaux « Ville de Maranhao ».

Rate: post card neighboring countries rate = 10c.

1ST JANUARY 1899 – 31ST MARCH 1910 POSTAL HISTORY



Post card from Thysville on June 15th, 1908 to Brazzaville / French Congo where it arrived on June 17th, 1908. Telegraph datestamp of Kinshasa (adherence to another card which the datestamp was not dry).

Rate: post card neighboring countries rate = 10c.

1ST JANUARY 1899 – 31ST MARCH 1910
POSTAL HISTORY



Cover from Banana on June 27th, 1899
to the Gouverneur of Kamerun. Transit
by Lagos on July 3rd, 1899 and
Kamerun on August 1st, 1899.

Rate: cover neighboring countries rate
= 25c. / 15gr.

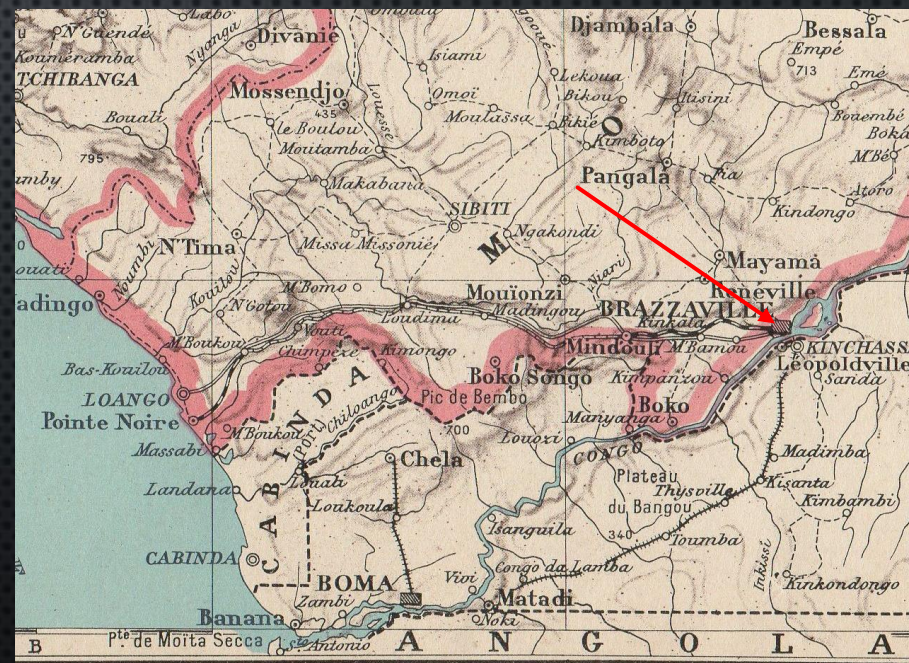


1ST JANUARY 1899 – 31ST MARCH 1910 POSTAL HISTORY



Front sent from Thysville on December 16th, 1908 to Brazzaville / French Congo.

Rate: cover neighboring countries rate = 25c. / 15gr.



1ST JANUARY 1899 – 31ST MARCH 1910 POSTAL HISTORY



Cover registered and posted on a ship (Paraguay) of the French line Loango à Bordeaux L.L. n°4 on May 18th, 1903 to Libreville / French Congo where it arrived on May 23rd, 1903.

Rate: cover neighboring countries rate: 25c. / 15gr. (4x) + Registration 50c. = 1,50Fr.



1ST JANUARY 1899 – 31ST MARCH 1910
POSTAL HISTORY



Registered cover from Matadi on August 18th, 1903 to Mayumba / French Congo. It was carried by a ship of the French line « Loango à Bordeaux L.L. n°1 » on August 18th, 1903.

Rate: cover neighboring countries rate: 25c. / 15gr. (5x) for 66gr. + Registration 50c. = 1,75Fr.

1ST JANUARY 1899 – 31ST MARCH 1910
POSTAL HISTORY

FRANCISCO RÔIZ GOMES

LÉOPOLDVILLE — CONGO BELGE

RECOMMANDÉ

Recommandé

Monsieur

Docteur Ringerbach.

Institut Pasteur



Brazzaville

Registered cover from Leopoldville on April 17th, 1909 to Brazzaville / French Congo.

Registration's demand & italic strike «Recommandé» but no number. The postman has probably put the strike before verifying the postage rate, which must have been 75c.

Rate: cover neighboring countries rate: 25c. / 15gr.
+ Registration 50c. = 75c.

1ST JANUARY 1899 – 31ST MARCH 1910
POSTAL HISTORY



Registered cover from Matadi on September 14th of 1909 to Benguela / Angola where it arrived on October 4th, 1909. Transited by Loanda/Angola on September 23rd, 1909. Redirected to the Belgian Congo where it arrived at Boma on November 17th, 1909.

Rate: cover neighboring countries rate: 25c. / 15gr. +
Registration 50c. = 75c.

1ST JANUARY 1899 – 31ST MARCH 1910
POSTAL HISTORY



Registered cover from Leopoldville on February 17th, 1910 to Libreville / French Congo. It was carried by a ship of the French line « Matadi à Bordeaux L.L. n°1 » on February 19th, 1910.

Rate: cover neighboring countries rate: 25c. / 15gr. (6x) for 79gr. + Registration 50c. = 2Fr.



1ST APRIL 1910
END OF THE SPECIAL RATE
FOR NEIGHBORING COUNTRIES

From 1st April, 1910 rate for neighboring countries = international rates