

LINDEKENS Philatelic Auctions

auction 2025-2

The "Kivu" collection

Belgian Congo and Ruanda Urundi postage due

Part 2



Brussels - 10 May, 2025



LINDEKENS

Philatelic Auctions

Auction 2025-2

Vente aux enchères sur (Internet) philasearch.com

Cette vente aux enchères sur philasearch.com aura lieu le **10 mai 2025**

La vente commence **à 9:00h**

Live (Internet) Auction on philasearch.com

This live auction on philasearch.com will be held **May 10, 2025**

The auction start at **9:00h** a.m.

9.00h

2700 – 2851 The “KIVU” collection – Belgian Congo and Ruanda Urundi postage due (Part. 2)

10.15h

3000 – 3301 The “general sale” – Belgian Congo → Republic of Rwanda

13.00h → 13.30h (Break - Lunchtime)

13.30h

3302 – 3674 The “general sale” – Belgique → FIN

16.00h

4000 – 4186 Madagascar – L’émission Type Groupe - surcharges de juin et août 1902 & l’émission « Zébu et Arbre du Voyageur

17.30h

4501 – 4787 Littérature

Les heures mentionnées pour le début des chapitres sont purement indicatives.

The times given for the start of the chapters are purely indicative.



LINDEKENS

Philatelic Auctions

Tel : +32 470 84 23 66

E-mail : info@lindikensauctions.com

www.lindikensauctions.com

Conditions de vente

1. La vente se fait en euros et au comptant plus 20% de commission, tous frais légaux compris + 1€ par lot acheté.
2. L'ordre des surenchères est fixé comme suit :
 De 4 euros à 50 euros : 2 euros
 De 50 euros à 100 euros : 5 euros
 De 100 euros à 300 euros : 10 euros
 De 300 euros à 700 euros : 20 euros
 De 700 euros à 2000 euros : 50 euros
 De 2000 euros à 5.000 euros : 100 euros
 De 5.000 euros à 10.000 euros : 200 euros
 De 10.000 euros à 20.000 euros : 500 euros
 > 20.000 euros : 1.000 euros
3. Les ordres seront exécutés sans frais supplémentaires en euros. En cas d'offres identiques pour un même lot, celui-ci sera attribué au 1^{er} ordre reçu. Nous n'accepterons pas les ordres inférieurs aux prix de départ.
4. L'organisateur a seul le droit de scinder un lot ou de rassembler plusieurs lots en un seul, s'il le juge utile.
5. Les frais d'expédition, d'assurance, paypal et de banques (les chèques ne sont pas acceptés) sont à charge de l'acheteur.
6. Tous les lots sont authentiques et garantis conformes à la description. Nous reprendrons les lots qui feront l'objet d'une réclamation justifiée par l'avis d'un expert autorisé. Cette reprise doit se faire endéans les 28 jours calendrier suivant l'adjudication.
7. Les lots composés de plus de 3 timbres ou 2 enveloppes ou 2 objets postaux et les défauts apparents sur photo ne seront pas repris.
8. Toute demande de crédit doit être formulée avant la vente et avoir fait l'objet de notre approbation écrite.
9. Les heures mentionnées pour le début des chapitres sont purement indicatives.
10. Les lots seront expédiés une fois le paiement reçu, sauf accord préalable écrit avant la vente.
11. Le transfert de propriété se produit au moment du paiement intégral des lots (frais de commissions compris).
12. Si le paiement dû par l'acheteur n'intervient pas dans les 15 jours à compter de la date de facturation, le montant dû sera majoré automatiquement d'un intérêt de retard calculé au taux d'un pour cent (1%) par période de 30 jours entamée. Cet intérêt commence à courir le lendemain du jour de l'échéance sans notification.
13. Nous nous réservons aussi le droit d'annuler la vente après 15 jours + 1 jour.
14. Pour le règlement de tous les différends qui pourraient survenir, les Tribunaux de Bruxelles sont seuls compétents.
15. En cas de contradiction, seul le règlement en langue française est d'application.

Symboles

Neuf sans charnière	**	Unmounted Mint	MNH
Neuf avec charnière	*	Mint and hinged	LH
Oblitéré	o	Used	
Oblitéré sur lettre, entier postal,...	✉	Used on cover, postal stationery,...	
Non dentelé	☐	Unperforated	

Vision des lots

Uniquement sur rendez-vous :

28 avril au 3 mai 2025

5 mai au 7 mai 2025

Contact

Thomas Lindekens
 Tel : +32 470 84 23 66

E-mail :
info@lindekensauctions.com

www.lindekensauctions.com



Sale terms

1. The sale is made in euros and purchase plus 20% commission, including all legal fees + 1€ per bought lot.
2. The order of the step bids is as follows:
From €4 to €50: €2
From 50 euros to 100 euros: 5 euros
From 100 euros to 300 euros: 10 euros
From 300 euros to 700 euros: 20 euros
From 700 euros to 2,000 euros: 50 euros
From €2,000 to €5,000: €100
From €5,000 to €10,000: €200
From €10,000 to €20,000: €500
More than 20,000 euros: 1,000 euros
3. Orders will be executed free of charge in euros. In the event of identical bids for the same lot, the lot will be awarded to the 1st order received. We will not accept orders below the starting prices.
4. The organiser alone has the right to split a lot or to combine several lots into a single lot, if he deems this appropriate.
5. Shipping, insurance, paypal and bank charges (cheques are not accepted) are at the buyer's expense.
6. All lots are authentic and guaranteed to conform to the description. We will take back lots that are the subject of a claim justified by the

- opinion of an authorized expert. This must be done within 28 calendar days of the auction.
7. Lots consisting of more than 3 stamps or 2 envelopes or 2 postal items and apparent defects in photographs/scans will not be taken back.
8. Any request for credit must be made prior to the sale and must be approved by us in writing.
9. The times given for the start of the chapters are purely indicative.
10. Lots will be dispatched once payment has been received, unless otherwise agreed in writing prior to the sale.
11. Transfer of ownership occurs upon full payment of the lots (including commission).
12. If payment is not received from the buyer within 15 days of the invoice date, the amount due will automatically be increased by late payment interest calculated at the rate of one percent (1%) per 30-day period commenced. This interest starts to run the day after the due date without notification.
13. We also reserve the right to cancel the sale after 15 days + 1 day.
14. For the settlement of any disputes that may arise, the Courts of Brussels shall have sole jurisdiction.
15. In the event of contradiction, only the rules in French shall apply.

Symboles

Neuf sans charnière	**	Unmounted Mint	MNH
Neuf avec charnière	*	Mint and hinged	LH
Oblitéré	o	Used	
Oblitéré sur lettre, entier postal,...	✉	Used on cover, postal stationery,...	
Non dentelé	☐	Unperforated	

Viewing lots

By appointment only
From 28 April to 3 May 2025
From 5 May to 7 May 2025

Contact

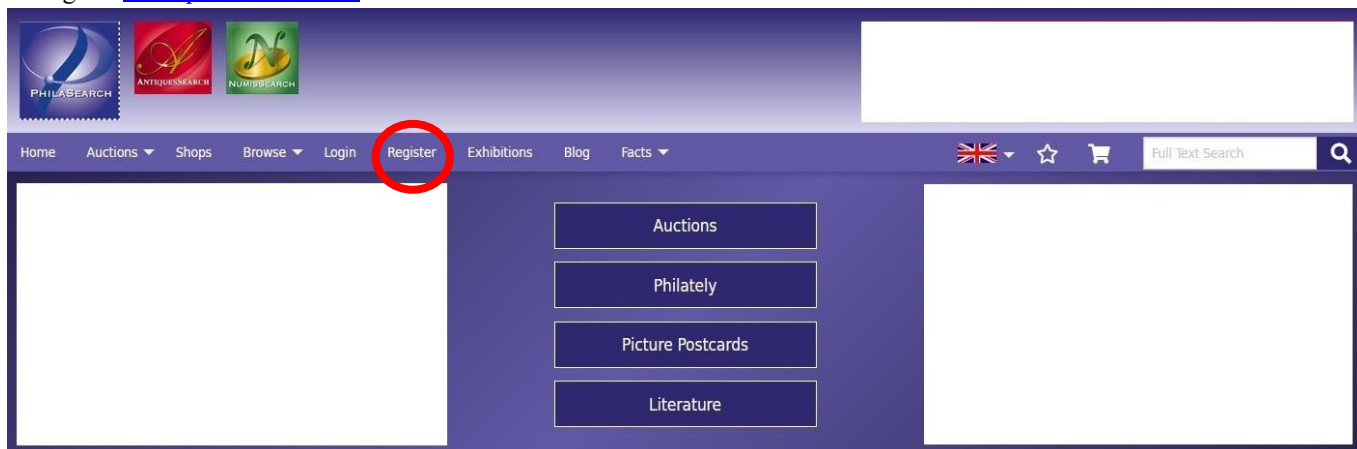
Thomas Lindekens
Tel : +32 470 84 23 66

E-mail :
info@lindekensauctions.com

www.lindekensauctions.com

Comment participer à nos ventes aux enchères sur (Internet) via philasearch.com How to join our live (Internet) Auction on philasearch.com

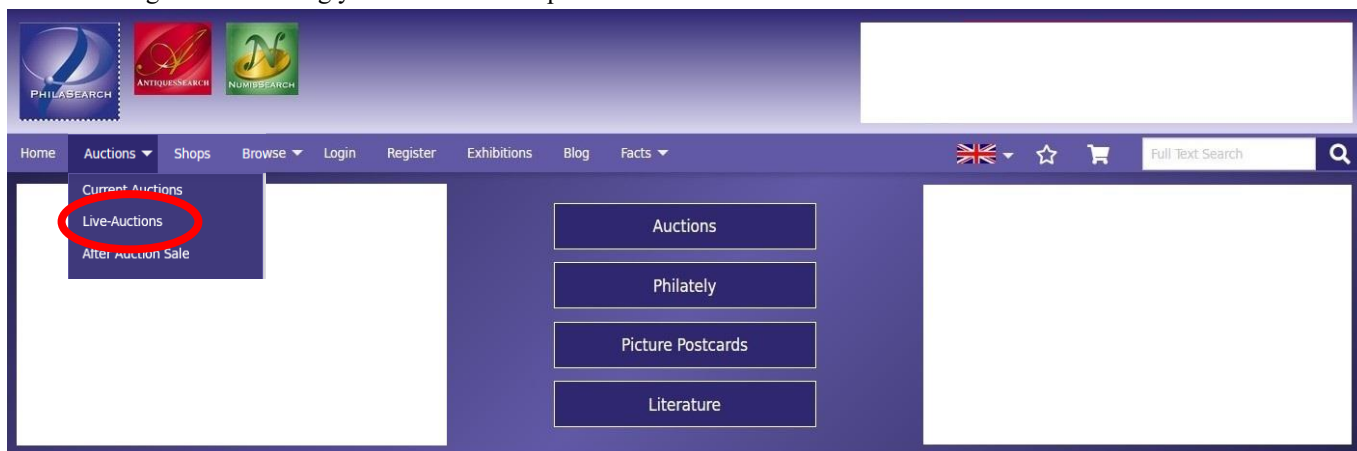
First go to www.philasearch.com



Click on “Register” (if you don’t have yet an account)

Give your personal details, choose username and password, agree to terms and conditions and submit the registration form. Once your account is active (check your email),

Click on “Login” and entering your username and password.



Then click on Auctions, select Live-auctions.

Live Online Auctions

Bid "live" from the comfort of your home
Do not miss any more bargains and participate directly. Live Auctions can be actual floor auctions that have integrated "live" bidding via the internet in realtime (LIVE), as well as automated realtime internet auctions conducted by our "virtual" auctioneer (ONLINE LIVE).

To participate on your PC or your mobile device, a stable internet connection is required. Our recommendations include a connection speed of at least 2 MB/s (broadband/optical fiber connection) as well as a current web browser (Mozilla Firefox, Google Chrome, Microsoft Edge) and JavaScript active.

Start Simulator for Liveauction
The simulator does not record any bids - feel free to try out everything!

Important:
Some auctions require a special registration to participate. This registration should take place **at least 24 hours before the auction starts**. In general, admission approval policies are subject to the auction company's discretion. These auctions are labeled as **W/ REGISTRATION**.

Please note:
If you do not want to miss your chance of bidding, you can add bookmarks for lots you are interested in. The auctioneer will then be notified that a potential live bidder is available for these lots - of course without transferring any personal information. To add a bookmark, click on "Add to Bookmarks" on the respective lots' detail page. The bookmark list will also display a detailed overview for you to use as a referral during the auction.

Just a few hints for your successful participation:

- Take your time to browse interesting offers prior to the auction.
- Take notes of the lot numbers you would like to bid on, and decide on the highest price you are willing to pay.
- You may place your bids prior to the auction and intercept during the live auction only if you are outbid.
- If you have any questions, please contact the auction company in due time prior to the auction.

Category	Auction Title	Dates	Registration Deadline	Action
W/ REGISTRATION	ONLINE LIVE: A different live auction	27. APRIL 2021 20:00 CEST		Start simulator
W/ REGISTRATION	LIVE: The live auction you would like to join	APRIL 27TH - 28TH, 2021 FROM 27. APRIL 2021 10:30 CEST		Register
APPROVED	LIVE: A different live auction	APRIL 27-30, 2021 FROM 27. APRIL 2021 00:30 CEST	REGISTRATION DEADLINE: 30. APRIL 2021 18:00 CEST	Start bidding
W/ REGISTRATION	ONLINE LIVE: Another different live auction	30. APRIL 2021 10:00 CEST		Register

Click on “Register”, (in the right column under Lindekensauctions).

Then follow the procedure.

Visitez notre web site/ Visit our website :

www.lindekensauctions.com



The screenshot shows the Lindekens website home page. At the top left is the Lindekens logo. To its right is a blue header with the text "Accueil Home". Below the header is a main section titled "Vente aux enchères sur Internet" (Internet Auction) with the date "18 janvier 2025". Underneath is "Live Internet Auction" with the date "January 18, 2025". A sidebar on the left contains navigation links: Accueil Home, Conditions de vente Sale terms, Descriptions de collections Description of collections, Expertise, A propos About, and Contact. The main content area features three auction listings, each with a thumbnail image of stamps and a "Télécharger PDF Download PDF" link. The listings are: "The 'Kivu' collection Belgian Congo and Ruanda Urundi postage due (Part 1)", "The general sale", and "The 'Tanger' collection Spanish Morocco censored mails 1936-1945".

Auction Agent:



Love Auctions

Nick Martin FRPSL

Address: 2 Field View
Ashton Road
Siddington
Cirencester
Gloucestershire
GL7 6HB

Mobile: 07703 766477

Website: www.loveauctions.co.uk



The “Kivu” collection

Belgian Congo and Ruanda Urundi postage due

Part 2

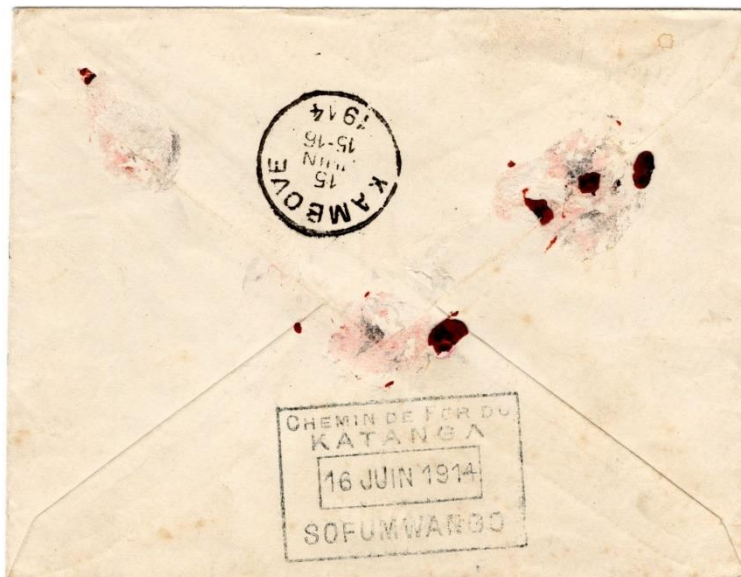
Lindekens Philatelic auctions is proud to present the part 2 of the collection of Belgian Congo and Ruanda Urundi postage due stamps for sale. This unique collection has been awarded a national gold medal. It took almost 40 years to assemble this formidable collection. Taxed mail from the Belgian Congo and Ruanda Urundi are extremely scarce. This is the last chance to buy a piece of this collection.

Divided it into chapters:

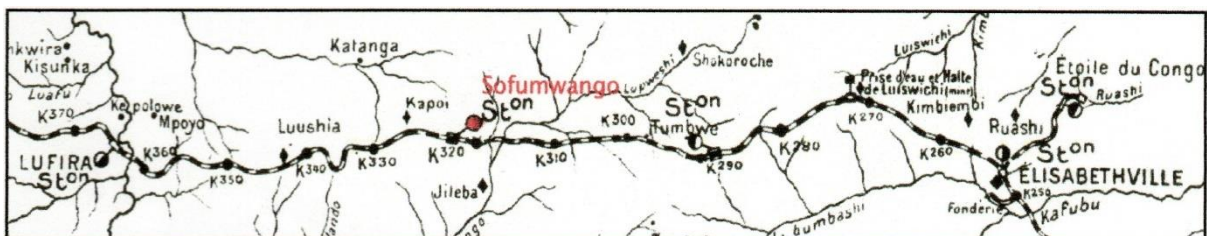
	Lots		Lots
Belgian Congo - Mols unilingual 1909 issue - used as postage due stamps	2700-2701	Belgian Congo - Vloors issue used as postage due stamps with overprint "T"	2808-2813
Belgian Congo - Mols bilingual 1910 issue - used as postage due stamps	2702-2704	Belgian Congo - Palms 1942 issue used as postage due stamps with overprint "T"	2814-2820
Belgian Congo - Mols bilingual 1915 issue - used as postage due stamps	2705-2709	Belgian Congo - Palms 1942 issue used as postage due stamps without overprint "T"	2821-2825
Belgian Congo - Mols Recuperation 1921 issue - used as postage due stamps	2710-2711	Belgian Congo - Flowers issue used as postage due stamps without overprint "T"	2826-2828
Belgian Congo - Mols Malines 1922 issue - used as postage due stamps	2712-2715	Republic of Congo - Ordinary stamps used as postage due	2829
Belgian Congo - 1923 postage due issue	2716-2755	Ruanda Urundi - 1924 postage due issue	2830-2832
Belgian Congo - 1923 postage due issue used as ordinary stamps - Stamps lack period	2756-2757	Ruanda Urundi - 1924 postage due issue used as ordinary stamps - Stamps lack period	2833
Belgian Congo - 1943 postage due issue - perforation 12 1/2	2758-2761	Ruanda Urundi - 1943 postage due issue - perforation 12 1/2	2834-2835
Belgian Congo - 1943 postage due issue (perf. 12 1/2) used as ordinary stamps - Stamps lack period	2762	Ruanda Urundi - 1943 postage due issue - perforation 14x14 1/2	2836-2838
Belgian Congo - 1943 postage due issue - perforation 14 x 14 1/2	2763-2792	Ruanda Urundi - 1943 postage due issue used as ordinary stamps - Stamps lack period	2839-2846
Belgian Congo - 1957 postage due issue	2793-2805	Ruanda Urundi - 1959 postage due issue	2847-2850
Belgian Congo - 1957 postage due issue used as ordinary stamps	2806	Rwanda - ordinary stamps used as postage due stamps	2851
Belgian Congo - Airmail 1921 issue used as postage due stamps with overprint "T"	2807		



Belgian Congo - Mols unilingual 1909 issue - used as postage due stamps



2700 recto/verso



- 2700 ✉ 1914, Belgium, unfranked envelope sent from Roux May 29, 1914 to Sofumwango in Belgian Congo where it arrived June 16, 1914 (BCK railway cie. cachet on reverse "Chemin de Fer du KATANGA - 16 JUN 1914 - SOFUMWANGO") via Kambove (June 15), with manuscript "à taxer à l'arrivée", taxed at 50c (double of the insufficiency). Rate for cover to Belgian Congo 25c, paid with (1x) 50c olive Mols Unilingual 1909 issue, with "TAXES" mark (type IX) as overprint, applied at Kambove, very fine and scarce cover showing Unilingual Mols issue used as postage due, very impressive, a master piece of Belgian Congo, with Lindekens certificate 500 €



2701

2701

1913, Belgium, unfranked fragment of envelope sent from Brussels / Belgium April 12, 1913 to Belgian Congo with handwritten note of the sender "à taxer à l'arrivée", with "T" mark and manuscript "50" (double of the insufficiency), paid with (1x) 50c olive Mols unilingual 1909 issue with sheet margin with boxed overprint "TAXES" (type IX), the usage of Unilingual Mols as postage due is scarce, ex J-M Frenay, very fine

30 €

Belgian Congo - Mols bilingual 1910 issue - used as postage due stamps



2702

2702 1910, group of 2 stamps on fragment, 15c ochre Mols bilingual 1910 issue with boxed overprinted "TAXES" in violet and 25c blue Mols bilingual 1910 issue with boxed overprinted "TAXES" in violet, clean and scarce, signed "V.G.", very fine 20 €



2703

2703 1911, Austria, picture postcard franked with 5h sent from Austria April 17, 1911 to Monveda / Belgian Congo where it arrived June 22, via Leopoldville May 16, with Belgian Congo "T" mark and handwritten note "010", franked as printed matter but sender forgot to cross out the text "POSTKARTE", postage due 10c (double of the insufficiency) paid with 10c carmine Mols bilingual 1910 issue with boxed overprint "TAXES" (type III), clean and scarce, very fine 160 €



2704 ☑

1910, Italy, picture postcard franked with 5c sent from Frascati in June 1910 to Loova (Ponthierville) in Belgian Congo, via Anvers, Belgium (June 4) and Stanleyville (Aug. 5), with Italian "T" mark, UPU rate for picture postcard 10c, postage due 10c (double of the insufficiency) paid with 10c carmine Mols bilingual 1910 issue with boxed overprinted "TAXES" (type III), clean and scarce, very fine, with Lindekens certificate

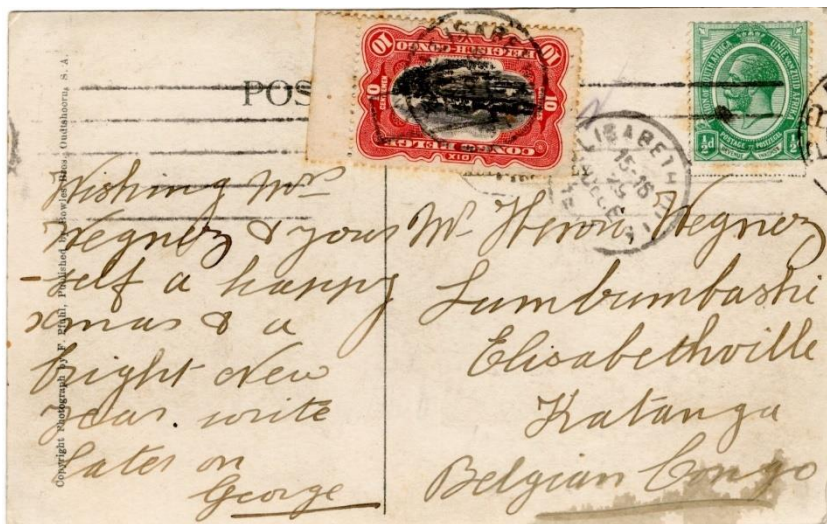
140 €

2704

Belgian Congo - Mols bilingual 1915 issue - used as postage due stamps

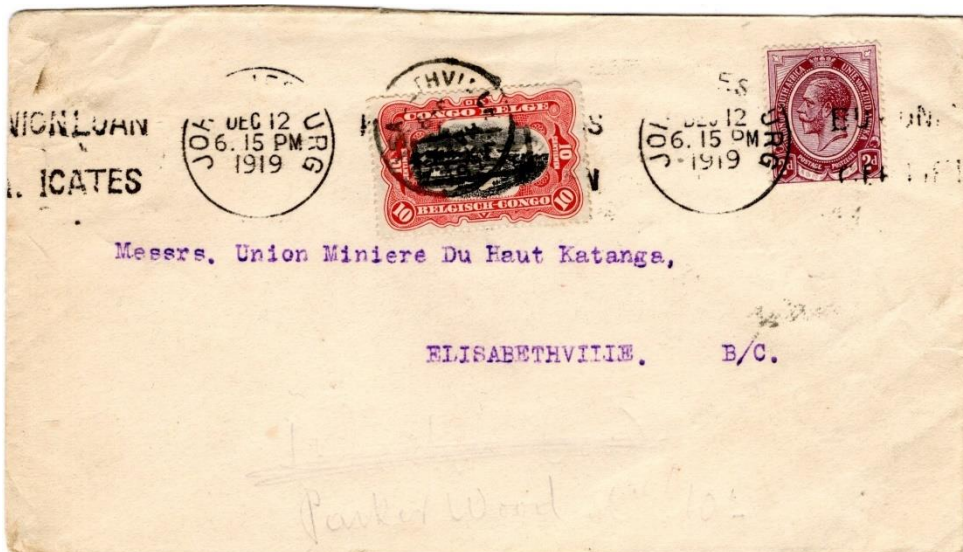
2705 ☑

1917, South Africa, picture postcard franked with 1/2d sent from Pretoria in December 1917 to Elisabethville / Belgian Congo where it arrived December 29, with South African "T10c" mark in black, under the Congo stamp, UPU rate for picture postcard 1d, postage due 10c (double of the insufficiency) paid with 10c carmine Mols bilingual 1915 issue with sheet margin and with boxed overprint "TAXES" (type IX), applied and cancelled at Elisabethville (January 6, 1918), very fine



60 €

2705

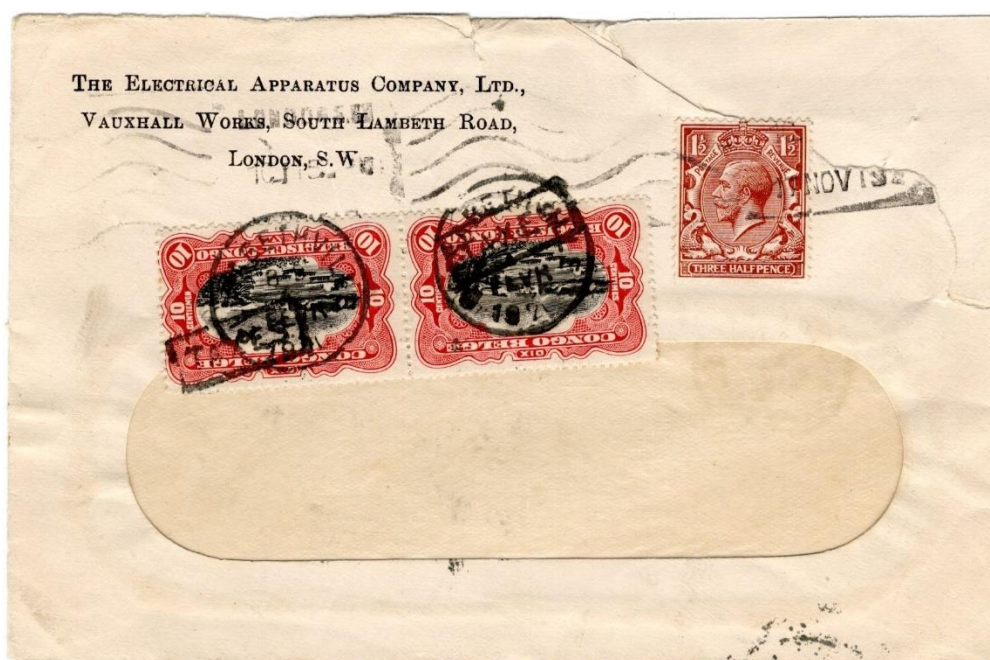


2706 ☑

1919, South Africa, envelope franked with 2d sent from Johannesburg December 12, 1919 to "Union Minière du Haut Katanga" Elisabethville / Belgian Congo where it arrived December 18, taxed, UPU rate for cover = 2 1/2d, postage due 10c (double of the insufficiency) paid with 10c carmine Mols bilingual 1915 issue with boxed overprint "TAXES" (type IX), applied and cancelled at Elisabethville (January 4, 1920), very clean cover, very fine

80 €

2706



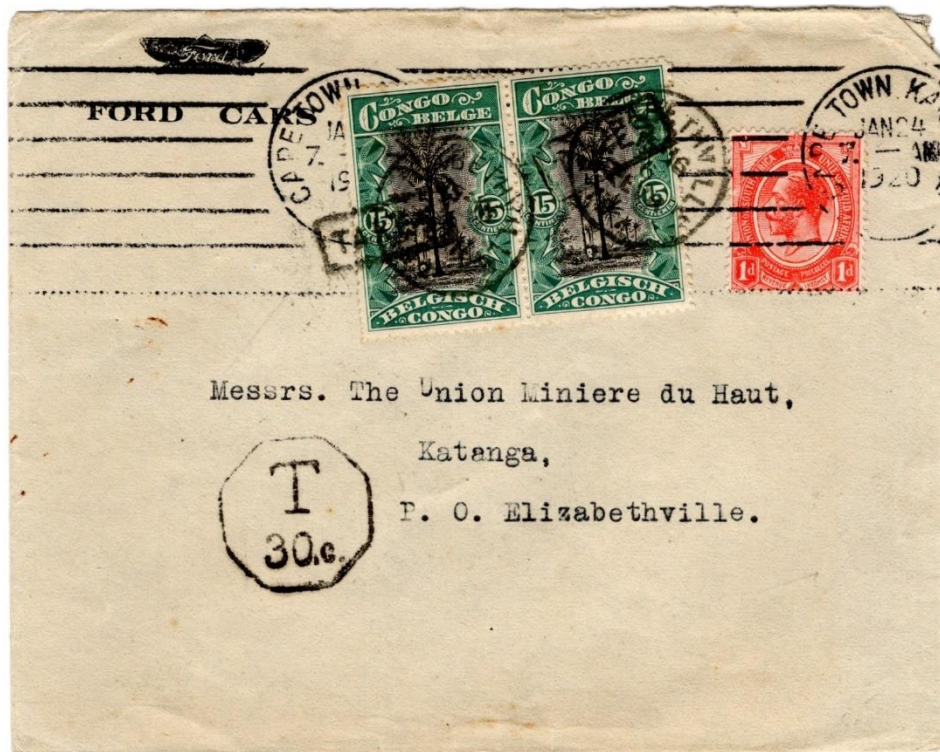
2707

- 2707 ✉ 1919, Great Britain, envelope franked with 1 1/2d sent from London November 17, 1919 (probably) to Elisabethville / Belgian Congo where it arrived December 19, taxed, UPU rate for cover = 2 1/2d, postage due 20c (double of the insufficiency), paid with horizontal pair 10c carmine Mols bilingual 1915 issue with boxed overprint "TAXES" (type IX), applied and cancelled at Elisabethville (February 4, 1920), the pair of Mols stamps tax is rare, fine 100 €



2708

- 2708 ✉ 1919, South Africa, envelope franked with 1/2d, sent from Boksburg December 30, 1919 to Elisabethville in Belgian Congo where it arrived in January 1920, with South African "T 40 centimes" mark, rate for international cover 2 1/2d, paid with 40c brown-red Mols bilingual 1915 issue (plate II+A3) with boxed overprint "TAXES" (type IX) and cancelled Elisabethville, clean cover, very fine 120 €



2709

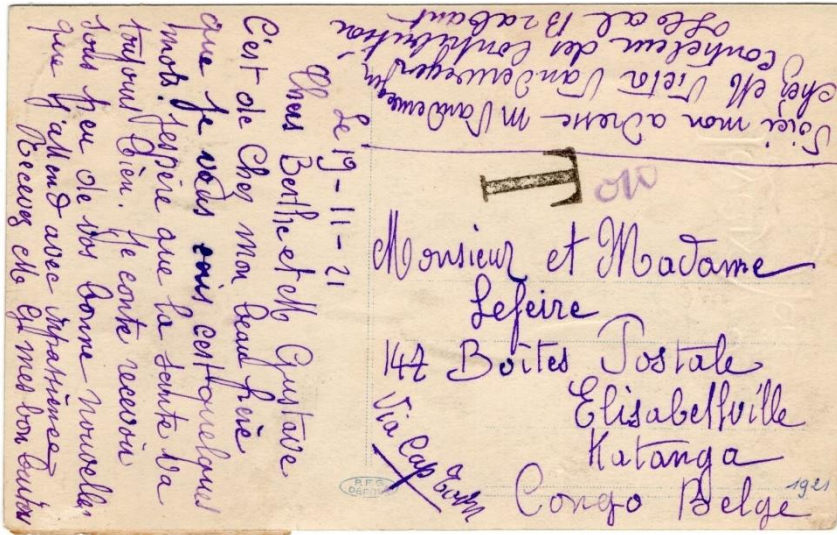
- 2709 ✉ 1920, South Africa, envelope franked with 1d, sent from Johannesburg January 24, 1920 to Elisabethville in Belgian Congo where it arrived February 5, with South African "T 30c" mark, rate for international cover 2 1/2d, paid with a horizontal pair of 15c green Mols bilingual 1915 issue (plate V+C - position 26-27) with boxed overprint "TAXES" (type IX) and cancelled Elisabethville (Feb. 5), Ex Frenay, clean cover, very fine, with Lindekens certificate 140 €

Belgian Congo - Mols Recuperation 1921 issue - used as postage due stamps



2710

- 2710 ✉ 1923, Belgian Congo, envelope franked with (1x) 10c - Vloors issue, sent from Leopoldville August 25, 1923 to Kinshasa / Belgian Congo, rate of March 1, 1921 for domestic cover 25c for first 20gr, with "T" mark and handwritten note "030", (double of the insufficiency), paid with 30c on 10c carmine Mols Recuperation 1921 issue with boxed overprint "TAXES" (type IX) applied on the stamp and on the cover, a scarce cover, very fine 150 €



2711 recto/verso

2711 ☑

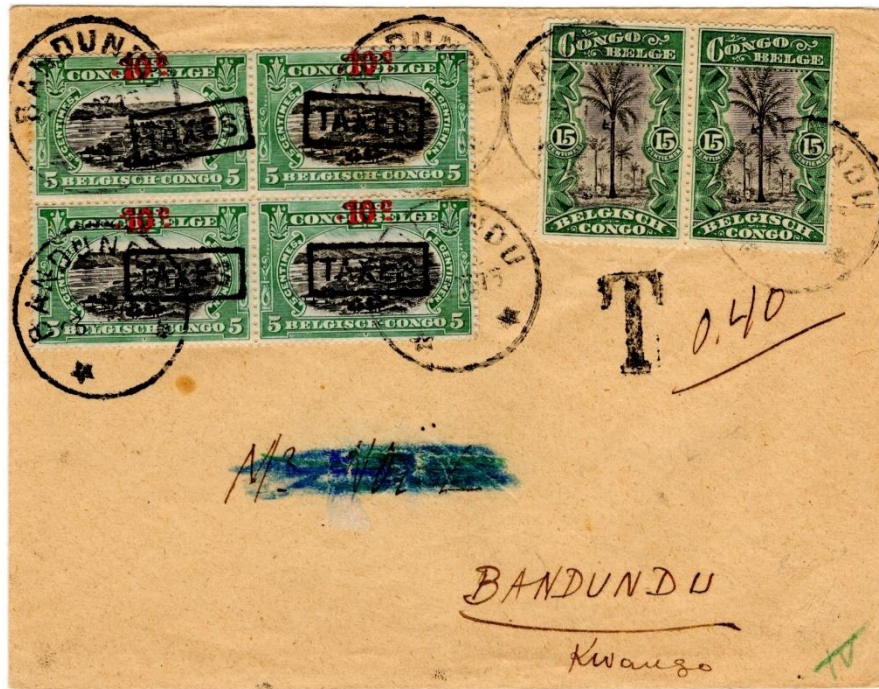
1921, Belgium, picture postcard franked at 10c, sent from Halle November 20, 1921 to Elisabethville / Belgian Congo where it arrived December 20, 1921, sender request "via Cap Town", with "T" mark and manuscript "010" in pencil, rate of March 1, 1921 for picture postcard to Belgian Congo 15c, taxed at 30c (An UPU directive of 14 March 1921 set the minimum tax at 30c, applicable from 1 January 1922), paid with 30c on 10c carmine Mols Recuperation 1921 issue with boxed overprint "TAXES" (type IX) and cancelled Elisabethville (Dec. 20), very fine

Belgian Congo - Mols Malines 1922 issue - used as postage due stamps



2712 recto/verso

2712 ☑ 1925, Belgian Congo, notice form of Elisabethville July 30, 1925 about an envelope taxed at 50c, with demand to take the envelope at "Guichet 4", paid with 50c on 25c blue Mols Malines overprint issue with boxed overprint "TAXES" (type IX) tied by Elisabethville cachet (type 1 - 23mm diameter) August 1, 1925, great rarity of the postage due of Belgian Congo, very fine 280 €



2713

- 2713 1923, Belgian Congo, envelope franked with horizontal pair of 15c green Mols bilingual 1915 issue, sent from Bandundu February 23, 1923 to Bandundu, rate of March 1, 1921 for domestic cover 25c/20gr (2x), with "T" mark and handwritten note "0,40", (double of the insufficiency), paid with a block of 4 of the 10c on 5c green Mols Malines overprint issue with boxed overprint "TAXES" (type IX) tied by Bandundu cachet (type 5) February 23, 1923, few cover known with a block of 4 stamps used as postage due, very fine 180 €



2714

- 2714 1923, Belgian Congo, unfranked envelope, written in Equateur and sent from Coquilhatville January 26, 1923 to Leopoldville where it arrived January 31, 1923 (cachet type 5), with "T" mark and manuscript "050" in blue pencil (double of the insufficiency), Rate of March 1, 1921 for domestic cover 25c/20gr, paid with 50c on 25c blue Mols Malines overprint 1922 issue (plate III1+B, old printing with 2 points between the rocks, very scarce) with boxed overprint "TAXES" (type IX) and cancelled at Leopoldville, ex Frenay, partial envelope but very scarce usage of the Mols Malines overprint issue, opened for exhibit, with Lindekens certificate 120 €



2715

- 2715 ✉ 1922, Belgium, front (only) of cover, franked at 20c, sent from Anvers July 19, 1922 to Kindu / Belgian Congo, sender request "Via Capetown, rate of March 1, 1921 for a cover to Belgian Congo 25c/20gr, with handwritten mark "T" in blue pencil, taxed at 50c (double of the insufficiency), paid with 50c on 25c blue Mols Malines overprint issue with boxed overprint "TAXES" (type IX) tied by Kindu cachet (type 1) August 23, 1922 60 €

Belgian Congo - 1923 postage due issue

- 2716 **/* 1923, Belgian Congo, shades study lot of 10 (mint) stamps of 10c postage due stamp of 1923 issue, 4 different shades from grey-brown to deep sepia, fine 20 €
- 2717 o 1923, Belgian Congo, shades study lot of 4 (used) stamps of 10c postage due stamp of 1923 issue, showing 2 different shades grey-brown and deep sepia, mixed quality 2 €
- 2718 o 1928, Belgian Congo, 5c sepia postage due stamp of the 1923 issue tied by "THYSVILLE" telegraphic cachet (Heim & Keach type TIC.1-DMy) January 3, 1928, very few items known of this issue cancelled by a telegraphic cancellation, great rarity, very fine 20 €
- 2719 o 1943, Belgian Congo, 5c sepia postage due stamp of the 1923 issue, in block of 4, tied by "ELISABETHVILLE" cachet (Heim & Keach type 8) October 28, 1943, lightly rusted but blocks of 4 used are very scarce, also very late usage of this issue, definitely a rare block 20 €
- 2720 **/* 1923, Belgian Congo, shades study lot of 11 (mint) stamps of 10c postage due stamp of 1923 issue, 3 different shades from vermilion to deep carmine, fine 20 €
- 2721 o 1923, Belgian Congo shades study of 3 (used) stamps of 10c postage due stamp of 1923 issue, showing 3 different shades vermilion, carmine and deep carmine, very fine 8 €
- 2722 o 1926, Belgian Congo, 10c carmine postage due stamp of the 1923 issue, in vertical pair with sheet corner, tied by "LUSAMBO" cachet (Heim & Keach type 5D1-Dmyt) May 18, 1926, very fine 10 €
- 2723 o 1934, Belgian Congo, 10c carmine postage due stamp of the 1923 issue, in block of 4, tied by "LEOPOLDVILLE" cachet (Heim & Keach type 7) September 10, 1934, lightly rusted but blocks of 4 used are very scarce 20 €
- 2724 o 1925, Belgian Congo, 10c carmine postage due stamp of the 1923 issue with margin of sheet and sheet inscription "001957" on fragment, tied by "KASENYI" cachet (Heim & Keach type 5D1-Dmyt/t) September 4, 1925, superb, very fine 10 €
- 2725 **/* 1923, Belgian Congo shades study of 5 (mint) stamps of 15c postage due stamp of 1923 issue, showing 2 different shades light violet and violet, mixed quality 6 €

- 2726 o 1923, Belgian Congo shades study of 5 (used) stamps of 15c postage due stamp of 1923 issue, showing 2 different shades light violet and violet, fine 6 €
- 2727 o 1923, Belgian Congo, 15c violet postage due stamp of the 1923 issue tied by "ELISABETHVILLE" cachet (Heim & Keach type 1.2 tDMY) November 2, 1923, this issue is scarce cancelled by type 1 cachet, very fine 10 €
- 2728 o 1924, Belgian Congo, 15c violet postage due stamp of the 1923 issue, vertical pair, tied by "ELISABETHVILLE" cachet (Heim & Keach type 1.2tDMY) January 7, 1924, lightly rusted but still scarce, this issue is very rare cancelled by type 1 cachet 16 €
- 2729 **/* 1923, Belgian Congo shades study of 5 (mint) stamps of 30c postage due stamp of 1923 issue, showing 3 different shades from yellow green to deep green, mixed quality 10 €
- 2730 o 1923, Belgian Congo, 30c green postage due stamp of the 1923 issue tied by "ELISABETHVILLE" cachet (Heim & Keach type 1.2 tDMY) October 11, 1923, this issue is scarce cancelled by type 1 cachet, very fine 10 €
- 2731 **/* 1923, Belgian Congo shades study of 4 (mint) stamps of 50c postage due stamp of 1923 issue, showing 2 different shades ultramarine and deep blue, fine 10 €
- 2732 o 1923, Belgian Congo shades study of 8 (used) stamps of 50c postage due stamp of 1923 issue, showing 4 different shades from ultramarine to deep blue and turquoise, mixed quality 16 €
- 2733 o 1925, Belgian Congo, 50c blue postage due stamp of the 1923 issue with margin of sheet on fragment, tied by "KASENYI" cachet (Heim & Keach type 5D1-Dmyt/t) September 4, 1925, superb, very fine 10 €
- 2734 */o 1923, Belgian Congo shades study of 8 (used) and 3 (mint) stamps of 1fr postage due stamp of 1923 issue, showing interesting for shades study, mixed quality 10 €
- 2735 o 1933, Belgian Congo, 1fr grey postage due stamp of the 1923 issue, in block of 4, tied by "LEOPOLDVILLE I" (Heim & Keach type 7) cachet January 17, 1933, blocks of 4 used are very scarce, very clean and superb 26 €
- 2736 o 1939, Belgian Congo, 1fr grey postage due stamp of the 1923 issue tied by "BUMBA" cachet March 2, 1939, late usage, rare and superb 6 €
- 2737 o 1924-1938, Belgian Congo, group of 13 (used stamps) of the postage due stamp of the 1912 issue, with various cancellations such as Watsa, Coquilhatville, Elisabethville, Stanleyville, Kasenyi, Bumba Mobeka, quality to be checked 30 €



2718



2727



2722



2728



2719



2723



2724



2730



2733



2735



2736



2737



2738

- 2738 1923, Belgian Congo, envelope franked with 15c Floors issue, sent from Bolobo August 29, 1923 to Kinshasa where it arrived September 1, rate of March 1, 1921 for a domestic cover 25c/20gr, with "T" mark, taxed at 30c (An UPU directive of 14 March 1921 set the minimum tax at 30c, applicable from 1 January 1922), paid with 30c green postage due stamp of the 1923 issue tied by Kinshasa cachet September 3, 1923, Ex Jeukens very fine 120 €



2739

- 2739 ✉ 1930, Belgian Congo, airmail envelope (first flight Libenge-Leopoldville) franked with 60c Vloors issue and 50c and 1fr Airmail 1921 issue, sent from Libenge June 16, 1930 to Leopoldville where it arrived July 8, 1930, rate of May 1, 1927 for domestic cover 1fr for first 20gr + 1,50fr for airmail, taxed at 80c (double of the insufficiency), paid with 30c green and 50c light blue postage due stamps of the 1923 issue tied by Leopoldville cachet July 9, 1930, with on reverse side purple cachet of the Netherlands consulate, very fine cover 80 €



2740

- 2740 ✉ 1940, Belgian Congo, unfranked envelope sent from Kitobola to Matadi where it arrived April 5, 1940, rate of June 1, 1935 for domestic cover 1,25fr/20gr, with "T" mark, taxed at 2,50fr (double of the insufficiency), paid with 50c ultramarine and vertical pair of 1fr grey postage due stamps of the 1923 issue and tied by Matadi cachet (type 8) April 6, 1940, very fresh cover 100 €

2741

1924, Belgium, picture postcard franked at 15c, sent from Herstal May 30, 1924 to the H.C.B. (Huilieries du Congo Belge) in Tango in Belgian Congo, with "T" mark and manuscript "0,50" in pencil, rate of May 1, 1924 for picture postcard to Belgian Congo 30c, taxed at 30c (An UPU directive of 14 March 1921 set the minimum tax at 30c, applicable from 1 January 1922), paid with 30c green postage due stamp of the 1923 issue tied by Leopoldville cachet (type 1) July 9, 1924, the usage of cachets type 1 (23mm.) are scarce on postage due 1923 issue, very clean and fine, with Lindekens certificate



2741

80 €

2742

1924, Belgium, picture postcard franked at 25c, sent from Havelange September 25, 1924 to Leopoldville in Belgian Congo, with "T" mark, rate of May 1, 1924 for picture postcard to Belgian Congo 30c, taxed at 10c error of calculation (An UPU directive of 14 March 1921 set the minimum tax at 30c, applicable from 1 January 1922), paid with 10c carmine postage due stamp of the 1923 issue tied by Leopoldville cachet November 5, 1924, very uncommon error of taxation, very fine, with Lindekens certificate



2742

120 €

2743

1927, Belgium, postal stationery (no text on reverse) at 15c, sent from Cureghem April 23, 1927 to Lisala in Belgian Congo where it arrived June 8, 1927, with "T" mark and manuscript "0,60", rate of October 1, 1926 for postcard to Belgian Congo 45c, taxed at 60c (double of the insufficiency), paid with 10c carmine and 50c light blue postage due stamps of the 1923 issue tied by Lisala cachet type 1 (23mm. cachet is scarce on this issue), June 8, 1927, a very interesting item showing an unusual combination, very fine



100 €



2744

- 2744 ✉ 1926, Belgium, picture postcard franked at 40c, sent from Jemappes October 13, 1926 to Elisabethville / Belgian Congo, rate of October 1, 1926 for postcard to Belgian Congo 45c, with handwritten "T" in pencil, taxed at 30c (An UPU directive of 14 March 1921 set the minimum tax at 30c, applicable from 1 January 1922), paid with 30c green postage due stamp of the 1923 issue (with misplaced perforation - with lower neighbour) tied by Elisabethville cachet (type 7) November 3, 1926, uncommon curiosity, very fine 70 €



2745

- 2745 ✉ 1934, Belgium, picture postcard franked at 50c, sent from Namur May 5, 1934 to Jadotville / Belgian Congo where it arrived June 4, 1934, rate of February 1, 1934 for postcard to Belgian Congo 75c, taxed at 30c (An UPU directive of 14 March 1921 set the minimum tax at 30c, applicable from 1 January 1922), paid with vertical pair of 15c violet postage due stamps of the 1923 issue tied by Jadotville cachet (type 7) June 4, 1934, scarce tax, very fine 120 €



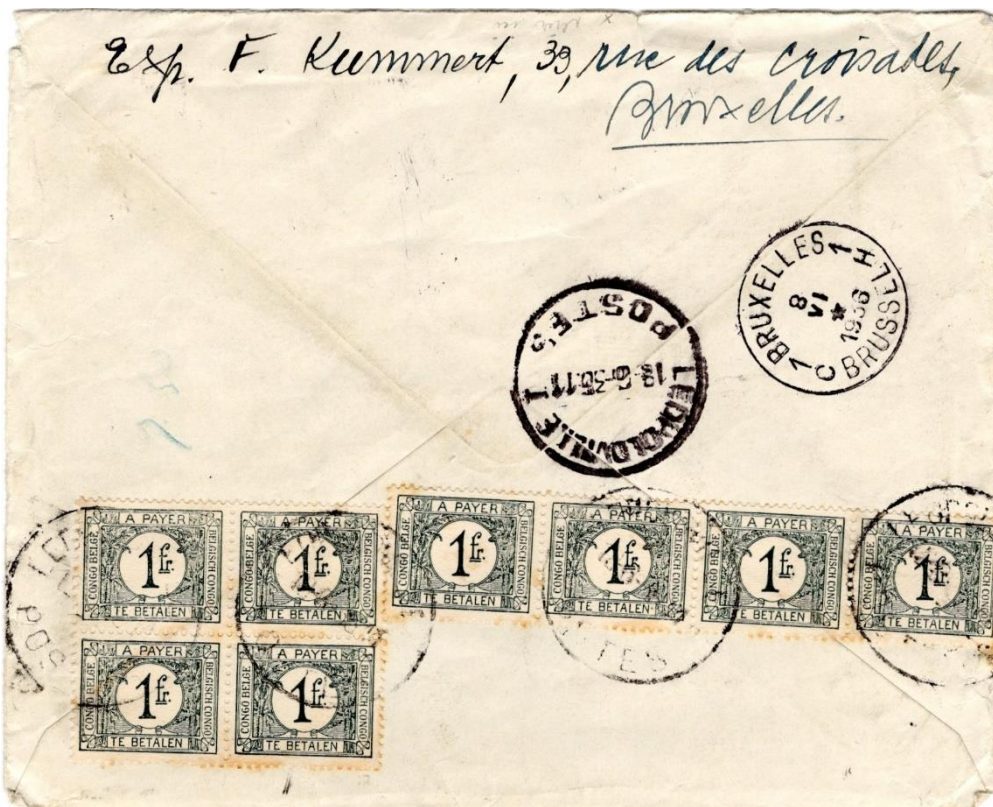
2746

- 2746 1924, Belgium, envelope franked at 25c, sent from Antwerpen June 3, 1924 to Tangango / Belgian Congo, via Leopoldville then forwarded with "REBUT" and "DECEDE" marks and handwritten note "Inconnu à Tango HCB 21.7.24" (HCB = Huileries du Congo Belge), rate of May 1, 1924 for cover to Belgian Congo 50c for first 20gr, manuscript "T 0,50" in blue pencil, taxed at 50c (double of the insufficiency), paid with 50c light blue postage due stamp of the 1923 issue tied by Leopoldville cachet (type 1) June 9, 1924, the usage of cachets type 1 (23mm.) are scarce on postage due 1923 issue 140 €




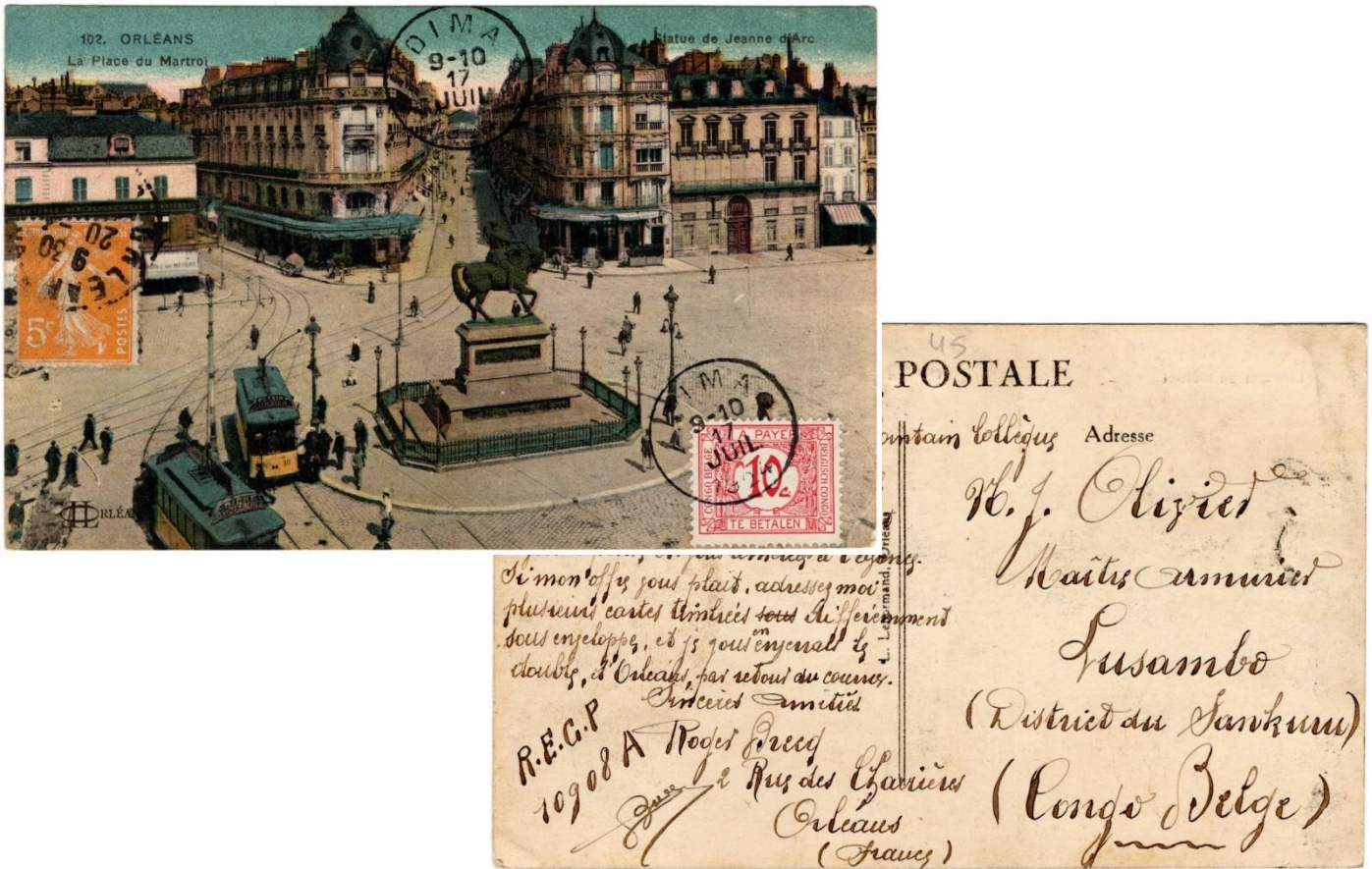
2747

- 2747 1935, Belgium, envelope franked at 1,25fr, sent from Brussels April 16, 1935 to Elisabethville / Belgian Congo where it arrived Mai 18, 1935, rate of February 1, 1934 for cover to Belgian Congo 1,50fr, with "T" mark and handwritten note "0,50", taxed at 50c (double of the insufficiency), paid with 50c ultramarine postage due stamp of the 1923 issue tied by Elisabethville cachet (type 7A) May 10, 1935, very fine 90 €



2748 recto/verso

- 2748  1936, Belgium, airmail envelope franked at 7,50fr, sent from Brussels June 8, 1936 to Leopoldville / Belgian Congo. Via Brussels 1, rate of Feb. 1, 1934 cover to Belgian Congo 1,50fr/20gr + airmail (rate of May 1, 1935) 3,50fr/5gr (4x) = 15,50fr, with bilingual boxed cachet "Trouvé à la boîte", manuscript weight "20gr" and "T" mark & handwritten note "8,00", (error of taxation, simple in place of double of the insufficiency), paid on reverse of the cover with block of 4 + horizontal strip of 4 of the 1fr grey postage due stamps of the 1923 issue tied by Leopoldville cachet (type 7) June 18, 1936, spectacular taxation with multiple postage due 1fr 150 €



2749 recto/verso

- 2749 1924, France, picture postcard franked at 5c, sent from Orleans April 20, 1924 to Lusambo in Belgian Congo, rate for picture postcard 10c, taxed at 10c error of calculation (An UPU directive of 14 March 1921 set the minimum tax at 30c, applicable from 1 January 1922), paid with 10c carmine postage due stamp of the 1923 issue tied by Dima cachet (type 1 - scarce) July 17, 1924, very uncommon error of taxation, very fine 90 €



2750

- 2750 1938, France, picture postcard franked at 30c, sent from Strasbourg August 17, 1938 to UMHK (Union Minière du Haut Katanga) in Kambove / Belgian Congo where it arrived September 21, with French boxed "T" mark and manuscript "090" in red pencil, taxed at 90c, paid with 3x 30c green postage due stamps of the 1923 issue tied by Kambove cachet (type8) September 21, very fine 140 €



2751

- 2751 ✉ 1929, Kenya, envelope franked at 5c (damaged stamp), sent from Uplands in 1929 to Bunia / Belgian Congo, via Jinja / Uganda March 8 and Kasenyi March 19, taxed at 2fr90, paid with vertical pair + 1 of the 30c green and vertical pair of the 1fr grey postage due stamps of the 1923 issue tied by Kasenyi cachet March 16, 1929, some faults, but spectacular taxation 140 €



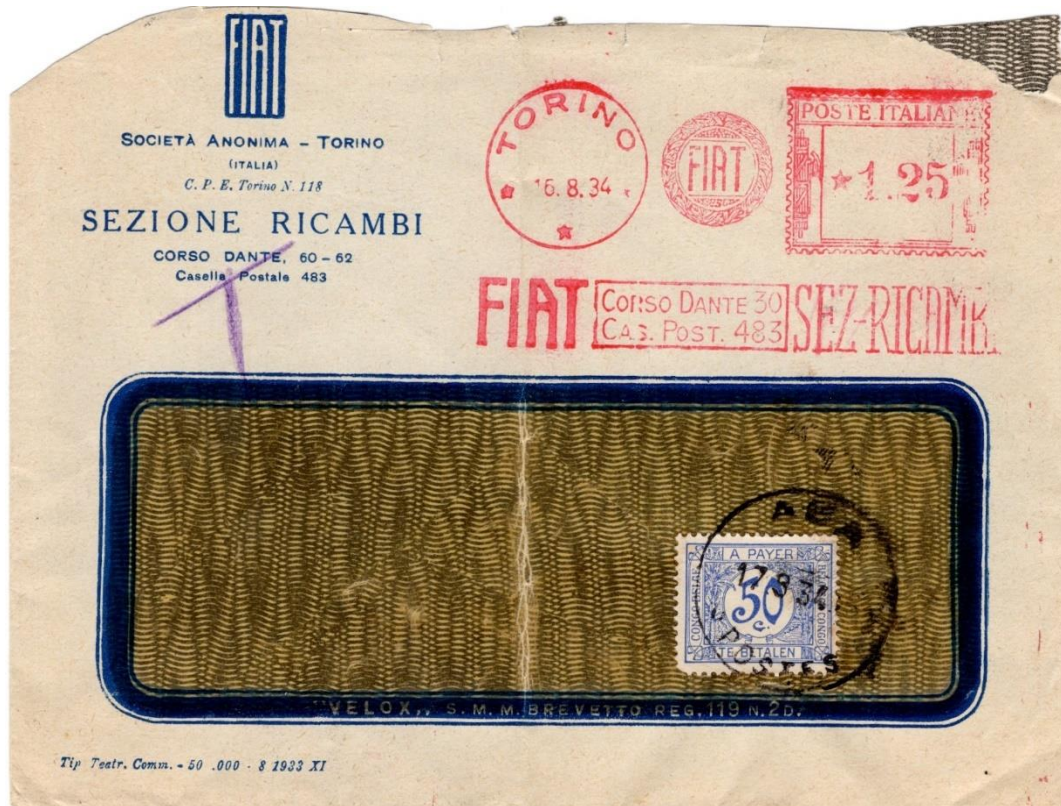
2752

- 2752 ✉ 1928, South Africa, picture postcard franked at 1d, sent from Capetown October 12, 1928 to Elisabethville in Belgian Congo where it arrived October 28, 1928, with South African "T10c" mark in black, taxed at 60c, paid with 30c (2x) green postage due stamps of the 1923 issue tied by Elisabethville cachet October 25, 1928, one 30c stamp damaged, otherwise a very clean postcard 50 €



2753

- 2753 1930, South Africa, front (only) of envelope franked at 1d, sent from Elizabeth December 1, 1930 to Capetown where it arrived December 3, sender note "if gone, please forward to Elisabethville - Congo Belge" so which is what happened, it arrived at Elisabethville / Belgian Congo December 12, taxed at 2,35fr, paid with horizontal pair of 1fr grey postage due stamps of the 1923 issue and 35c Vloors issue used as postage due stamp (scarce), tied by Elisabethville cachet December 12, very scarce taxation with a mix of issues 150 €



2754

- 2754 1934, Italy, envelope franked at 1,25l, sent from Torino August 16, 1934 to Abakona / Belgian Congo where it arrived September 15, via Brussels August 17, with manuscript "T", taxed at 50c (double of the insufficiency), paid with 50c light blue postage due stamp of the 1923 issue tied by Abakona cachet September 17, 1934, some faults but scarce incoming 100 €



2755

- 2755 ✉ 1934, Australia, envelope franked at 2p, sent from Sidney April 24, 1934 to Elisabethville / Belgian Congo where it arrived May 25, red framed mark "N.S.W. / T / 16 2/3" (New South Wales), taxed at 1,70fr, paid with vertical pair and horizontal pair (with part of sheet margin) of 30c green and 50c ultramarine postage due stamps of the 1923 issue tied by Elisabethville cachet May 25, 1934, rusted, still interesting cover, rare multiple 200 €

Belgian Congo - 1923 postage due issue used as ordinary stamps - Stamps lack period



2756

- 2756 ✉ 1942, Belgian Congo, envelope franked with 60c Natives issue, 1,75fr Monument Albert issue and 15c violet postage due stamp of the 1923 issue used as ordinary stamp, sent from Costermansville March 7, 1942 to Albertville where it arrived March 13, rate of December 1, 1940 for domestic cover 2,50fr for first 20gr, correctly franked, scarce 120 €



2757 recto/verso

- 2757 1942, Belgian Congo, airmail envelope franked with (2x) 1fr, 6fr, 7fr, 10fr Palms 1942 issue and on reverse (5x) 5c sepia postage due stamps of the 1923 issue used as ordinary stamps, sent from Costermansville December 10, 1942 to Sault Saint Marie / Michigan / USA, via Leopoldville (Dec. 14), with manuscript note "par avion Clipper via Léo", rate of January 1, 1942 for cover to international 3,50fr for first 20gr + airmail to London via PAA 21,75fr/5gr, correctly franked at 25,25fr, with censor tape type Aa "CENSURE CONGO BELGE" applied at Costermansville by censor number "1" (in purple) and censor tape of Trinidad "OPENED EXAMINER - I.E. / 8018", very impressive cover, scarce 120 €

Belgian Congo - 1943 postage due issue - perforation 12 ½



2758

- 2758 10c olive, 20c blue and 50c green, all perforation 12 1/2 and in block of 4, used, the 50c with a small thin, rare 20 €



2759

- 2759 1945, Belgian Congo, envelope franked with the full set (perf 12 1/2) of postage due stamps of 1943 issue, cancelled to order "MATADI 10 - 10 - 1945", very fine 40 €




2760

- 2760 1944, Belgian Congo, unfranked envelope, sent from Boma February 16, 1944 to Matadi where it arrived February 17, with "T" mark in black, rate for domestic mail between natives 50c, taxed at 1fr (double of the insufficiency), paid with vertical strip of 3 + one 10c olive (perf. 12 1/2) and vertical strip of 3 of 20c blue (perf. 12 1/2) postage due stamps of 1943 issue tied by Matadi cachet February 17, 1944, only few covers are known with perforation 12 1/2, one stamp of 10c damaged (eaten by a "cockroach"), scarce usage of the small values, very difficult to find 180 €



2761 recto/verso

- 2761  1945, Belgian Congo, envelope (opened = printed matter) franked with 10c Palms 1942 issue, sent from Elisabethville February 24, 1945 to Elisabethville, rate of January 1, 1942 for printed matter sent within a 2 km radius of the depot post office 50c/50gr, with "T" mark and manuscript "80", taxed at 80c (double of the insufficiency), paid on reverse with 10c olive, 20c blue and 50c green (all perf. 12 1/2) postage due stamps of 1943 issue tied by Elisabethville cachet February 24, 1945, only few covers are known with perforation 12 4/2, very difficult to find, definitively a scarce cover, very fine 180 €

Belgian Congo - 1943 postage due issue (perf. 12 ½) used as ordinary stamps - Stamps lack period



2762 recto/verso

- 2762 ✉ 1942, Belgian Congo, postal stationery Stibbe #67 with view 38 with additional franking (on view side) 2fr orange (perf 12 ½) postage due stamp of 1943 issue used as ordinary stamp, sent from Mweka August 14, 1942 to Lisboa / Portugal where it arrived November 30, rate of January 1, 1942 for international postcard 2fr, only few covers are known with perforation 12 ½, very difficult to find, very fine 200 €

Belgian Congo - 1943 postage due issue - perforation 14 x 14 ½

- 2763 ○ 1948, Belgian Congo, 10c olive (perf. 14x14 ½), in block of 4 with margin of sheet, postage due stamps of the 1943 issue tied by "LEOPOLDVILLE I" cachet December 2, 1948, creased but still scarce 20 €
- 2764 ○ 1949, Belgian Congo, 50c green (perf. 14x14 ½), in block of 4, postage due stamps of the 1943 issue tied by "MATADI B" cachet (Heim & Keach type 10(B)-), December 22, 1949, superb, very fine 20 €
- 2765 ○ 1958, Belgian Congo, 50c green (perf. 14x14 ½), in horizontal pair, postage due stamps of the 1943 issue tied by "LEOPOLDVILLE-1Y" cachet (Heim & Keach type 12B(Y)1) October 1958, very fine 8 €
- 2766 ○ Belgian Congo, 1fr brown (perf. 14x14 ½) postage due stamps of the 1943 issue tied by "T" mark in black, very scarce and very fine 14 €
- 2767 ○ 1945, Belgian Congo, 1fr brown (perf. 14x14 ½), in block of 4, postage due stamps of the 1943 issue tied by "LEOPOLDVILLE I" cachet December 13, 1945, very scarce and very fine 20 €
- 2768 ○ 1946, Belgian Congo, 1fr brown (perf. 14x14 ½), in block of 4, postage due stamps of the 1943 issue tied by "LEOPOLDVILLE I" cachet in November 1946, very scarce and very fine 20 €
- 2769 ○ 1958, Belgian Congo, 1fr brown (perf. 14x14 ½), in horizontal pair, postage due stamps of the 1943 issue tied by "LEOPOLDVILLE-1Y" cachet (Heim & Keach type 12B(Y)1) October 7, 1958, very fine 8 €
- 2770 ○ 1949, Belgian Congo, 2fr orange (perf. 14x14 ½), in block of 4, postage due stamps of the 1943 issue tied by "ELISABETHVILLE 2" cachet November 11, 1946, scarce and very fine 24 €
- 2771 ○ 1947, Belgian Congo, 2fr orange (perf. 14x14 ½), in block of 4, postage due stamps of the 1943 issue tied by "LEOPOLDVILLE 1" cachet in 1947, scarce and very fine 18 €
- 2772 ○ 1949, Belgian Congo, 2fr orange (perf. 14x14 ½), in vertical pair, postage due stamps of the 1943 issue tied by "COSTERMANSVILLE" cachet December 30, 1949, rare and very fine 10 €



2763



2764



2765



2766



2767



2768



2769



2770



2771



2773



2773 o

1945, Belgian Congo, fragment of envelope (only the reverse side), taxed at 80fr, paid with a block of 40 stamps of 2fr orange (perf 14x14 1/2) postage due stamps of 1943 issue tied by Costermansville cachet October 22, 1945, the largest block known, masterpiece, impressive and very fine

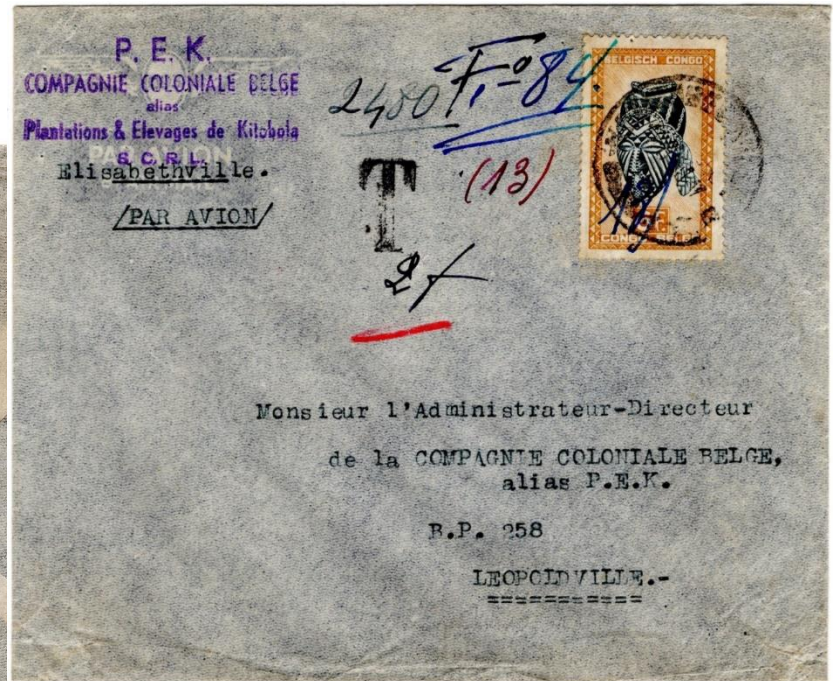
200 €

2773



2774 ex

2774 o group of 28 postage due stamps of 1943 issue (perf 14x14 1/2), all used, including a 20c blue vertical strip of 5 stamps, quality to be checked 16 €



2775 recto/verso

2775 ☒

1950, Belgian Congo, airmail envelope franked with 6fr Masks issue, sent from Elisabethville August 18, 1950 to Leopoldville where it arrived August 21, 1950, rate of April 1, 1950 for domestic cover 3fr for first 10gr + 1fr/10gr each 10gr (4x), with "T" mark and manuscript "2f", taxed at 2fr (double of the insufficiency), paid on reverse side with 2fr orange (perf 14x14 1/2) postage due stamp of 1943 issue tied by Leopoldville-1-Q cachet August 22, 1950, clean cover, very fine

70 €



2776 ☒

1950, Belgian Congo, envelope franked with 1fr (3x) and 2,50fr Masks issue, sent from Elisabethville August 22, 1950 to Leopoldville where it arrived August 23, 1950, with "T" mark in black, manuscript "3fr", rate of April 1, 1950 for domestic cover 3fr first 10gr, taxed at 3fr (double of the insufficiency), paid with 50c (2x) with sheet margin green (perf. 14x14 1/2) and 2fr orange (perf. 14x14 1/2) postage due stamps of 1943 issue tied by Leopoldville 1-Q cachet August 24, 1950, very fine

70 €

2776 recto/verso



2777

- 2777 ✉ 1953, Belgian Congo, airmail envelope franked with 2fr Flowers issue, sent from Goma May 28, 1953 to Bukavu (old named Costermansville) where it arrived May 30, 1953, rate of April 1, 1950 for domestic cover 3fr for first 10gr, with "T" mark and manuscript "2fr", taxed at 2fr (double of the insufficiency), paid with vertical pair of 1fr brown (perf 14x14 1/2) postage due stamps of 1943 issue tied by Costermansville E cachet June 3, 1953, very fine 120 €



2778

- 2778 ✉ 1955, Belgian Congo, airmail envelope franked with 1,50fr Baudouin issue, sent from Yangambi April 30, 1955 to Yambi, rate of April 1, 1950 for domestic cover 3fr for first 10gr, with "T" mark and manuscript "3fr", taxed at 3fr (double of the insufficiency), paid with vertical strip of 3 of 1fr brown (perf. 14x14 1/2) postage due stamps of 1943 issue, tied by Yangambi cachet May 8, 1955, the usage of multiples such as strip of 3 are very scarce, very fine 120 €



2779

- 2779 1955, Belgian Congo, unfranked envelope, sent from Bukavu-1G February 12, 1955 to the town, rate of April 1, 1950 for domestic cover 3fr for first 10gr, with "T" mark, taxed at 6fr (double of the insufficiency), paid with a block of 3 of 2fr orange (perf. 14x14 1/2) postage due stamps of 1943 issue, tied by Bukavu cachet February 15, 1955, very fine 80 €



2780

- 2780 1959, Belgian Congo, envelope (with content), franked with 1fr - 5 Kings issue, sent from Leopoldville January 19, 1959 to Leopoldville-Kalina where it arrived January 20, 1959, rate of October 1, 1958 for cover sent within a 3 km radius of the depot post office 1,50fr, with "T" mark and manuscript "1f", taxed at 1fr, paid with 1fr brown (perf. 14x14 1/2) postage due stamp of 1943 issue, tied by Leopoldville-Kalina-H cachet January 21, 1959, very late usage of the 1943 postage due issue, very fine 90 €



2781

- 2781 ✉ 1965, Republic of Congo, unfranked envelope, sent from Luluabourg in 1965 (cachet under the stamps) to Karawa, rate of May 1, 1964 for domestic cover 6fr for first 10gr, with "T" mark, taxed at 12fr, paid with 24x 50c green (perf. 14x14 1/2) postage due stamps of 1943 issue tied by Karawa cachet July 22, 1965, very impressive franking and an example of use after independence of this postage due issue, very fine 150 €



2782 recto/verso

- 2782 ✉ 1951, Belgium, airmail unfranked envelope, sent from Brussels December 29, 1951 to Leopoldville / Belgian Congo where it arrived January 18, 1952 (surface mail), rate of December 15, 1948 for cover to Belgian Congo 3fr for first 20gr + airmail 3fr/5gr, with handwritten note "T 0,37or", taxed at 6fr (double of the insufficiency), paid with block of 3 with corner of sheet of 2fr orange (perf. 14x14 1/2) postage due stamps of 1943 issue tied by Leopoldville I January 19, 1951, a good cover showing the multiple usage of 2fr, very fine 100 €



2783 ☑

1952, Belgium, airmail envelope franked with 2x 3fr (UPU 1949 issue) sent from Marcinelle (stamps not cancelled) to Elisabethville / Belgian Congo where it arrived November 6, 1952, rate of December 15, 1948 for cover to Belgian Congo 3fr + airmail 3fr/5gr (2x), with "T" mark and manuscript "T 0,13" (or), taxed at 2fr, paid with 2fr orange (perf. 14x14 1/2) postage due stamp of 1943 issue tied by Elisabethville November 6, 1952, rusted, but interesting usage of the 2fr alone

80 €

2783

2784 ☑

1953, Belgium, airmail picture postcard franked with 2fr (type Poortman), sent from Antwerpen September 25, 1953 to Bukavu / Belgian Congo where it arrived September 29, 1953, with "T" mark and handwritten note "T 0,13fr or", taxed at 2fr, paid with 2fr orange (perf. 14x14 1/2) postage due stamp of 1943 issue tied by Bukavu-1-E cachet September 29, 1953, very fine

80 €



2784

2785 ☑

1953, Belgium, airmail envelope franked at 5fr (including a 4fr type Poortman), sent from Brussels December 29, 1952 to Leopoldville / Belgian Congo where it arrived December 31, 1952, rate of December 15, 1948 for cover to Belgian Congo 3fr + airmail 3fr/5gr, with "T" mark and manuscript "4", taxed at 4fr (simple of the insufficiency), paid with vertical pair of 2fr orange (perf. 14x14 1/2) postage due stamp of 1943 issue tied by Leopoldville cachet January 6, 1953, very nice and clean, very fine

70 €



2785



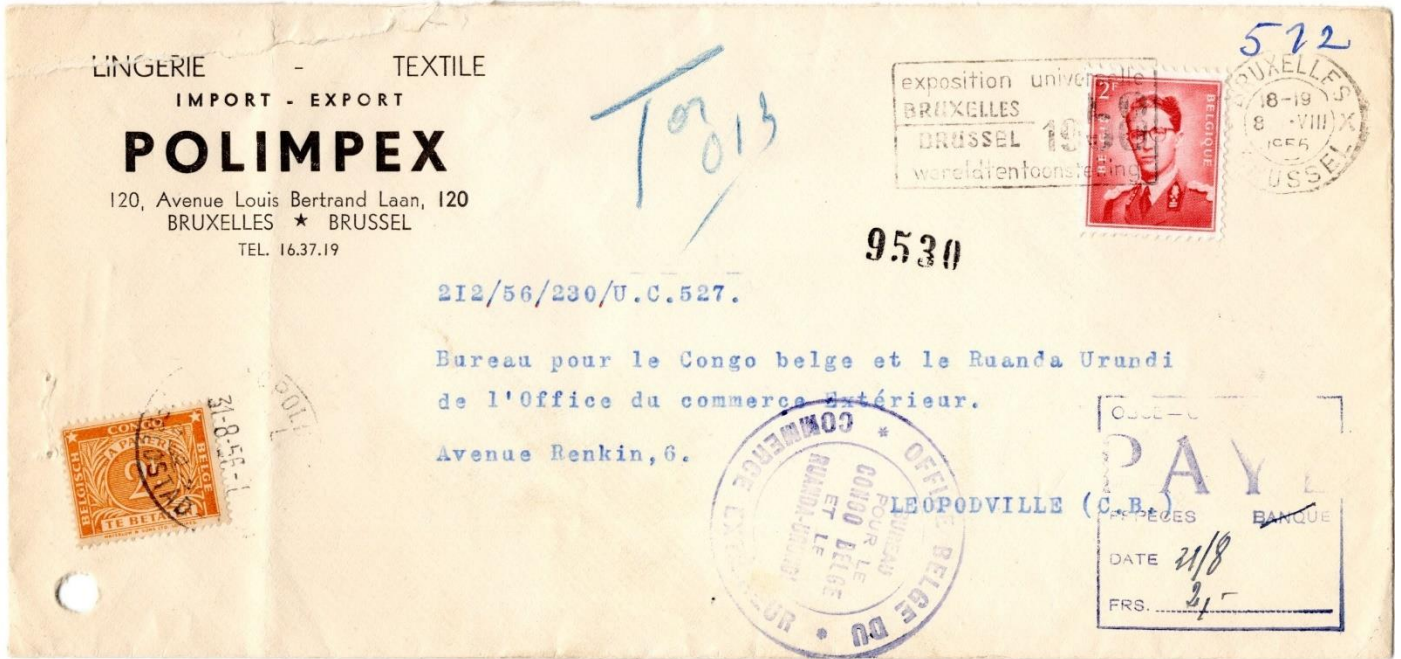
2786

- 2786 ✉ 1956, Belgium, airmail envelope franked at 3fr (type Poortman), sent from Haren June 8, 1956 to Bukavu / Belgian Congo where it arrived June 12, 1956, rate of December 15, 1952 for cover to Belgian Congo 3fr + airmail 3fr/5gr, with "T" mark, taxed at 5fr (double of the insufficiency), paid with 1fr brown (perf. 14x14 1/2) and vertical pair of the 2fr orange (perf. 14x14 1/2) postage due stamps of 1943 issue, tied by Bukavu-1K cachet July 3, 1956, a scarce cover 80 €



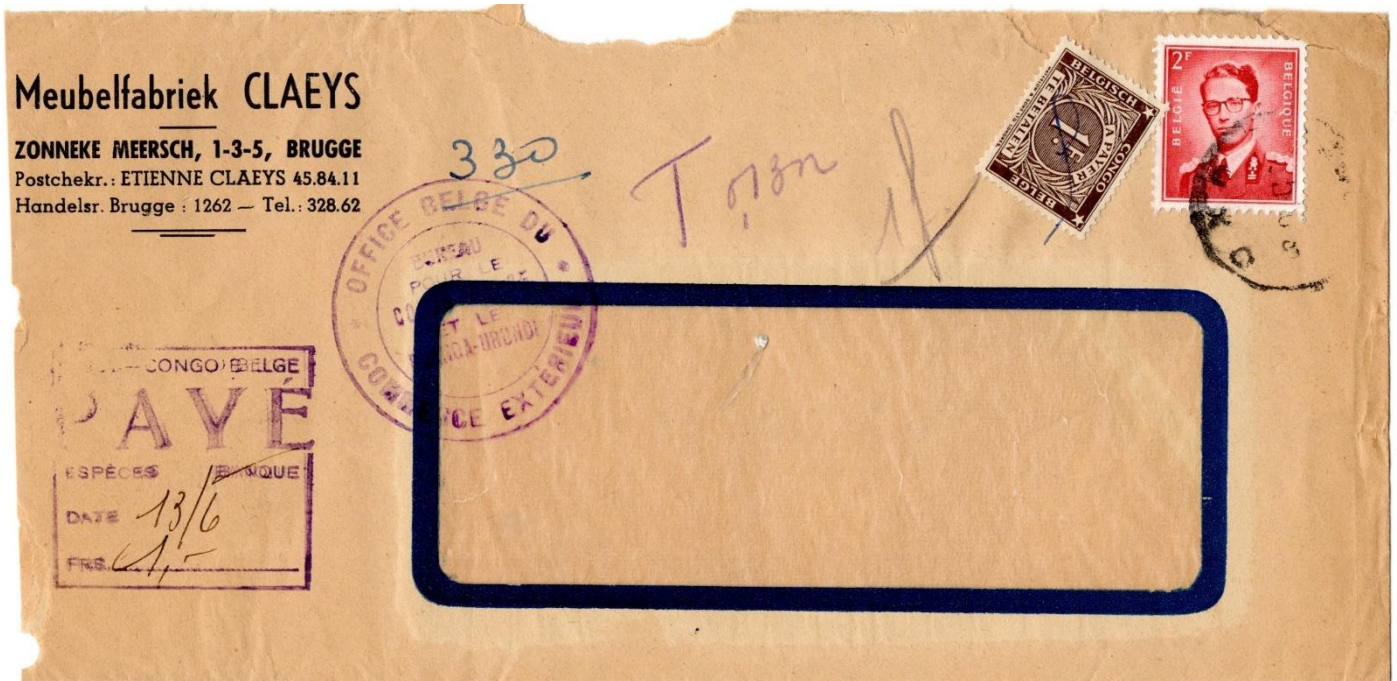
2787

- 2787 ✉ 1956, Belgium, airmail envelope franked at 4fr (type Baudouin Marchand), sent from Louvain October 11, 1956 to Leopoldville / Belgian Congo where it arrived October 15, via Brussels (Oct. 11), rate of December 15, 1948 for cover to Belgian Congo 3fr + airmail 3fr/5gr, with "T" mark, taxed at 4fr (double of the insufficiency), paid (stapled) with 2x blocks of 4 (one with sheet margin) of the 50c green (perf. 14x14 1/2) postage due stamps of 1943 issue, tied by Leopoldville-1T cachet October 17, 1956, very good cover showing the usage of blocks on cover, superb and rare 120 €



2788

- 2788 ✉ 1956, Belgium, envelope franked at 2fr (type Baudouin Marchand), sent from Brussels August 8, 1956 to Leopoldville in Belgian Congo where it arrived August 29, 1956, with manuscript "T 0,13 or" in blue pencil, taxed at 2fr (double of the insufficiency), paid with 2fr orange (perf. 14x14 1/2) postage due stamp of the 1943 issue tied by Leopoldville-1L cachet August 31, with administrative cachet of the OBCE "PAYE 31/8 - 2F", a good cover showing the usage of 2fr alone 80 €



2789

- 2789 ✉ 1956, Belgium, envelope franked at 2fr (type Baudouin Marchand), sent from Bruges in May 1956 to Leopoldville / Belgian Congo where it arrived June 13, 1956, rate of December 15, 1948 for cover to Belgian Congo 3fr, with handwritten note "T 013or" and "1fr", taxed at 1fr (simple of the insufficiency), paid with 1fr brown (perf. 14x14 1/2) postage due stamp of 1943 issue, stamp irregularly cancelled with a blue pen, an interesting cover 50 €



2790

- 2790 ✉ 1947, Great Britain, reverse (only) of envelope, sent from London to Leopoldville / Belgian Congo where it arrived September 27, 1947, taxed at 15,70fr, paid with vertical pair 10c olive (perf. 14x14 1/2), 50c green (perf. 14x14 1/2), 1fr brown and vertical strip of 4 and vertical strip of 3 of 2fr orange (perf. 14x14 1/2) postage due stamps of 1943 issue tied by LEOPOLDVILLE-1B cachet October 1, 1947, very high tax and superb usage of the postage due stamps 50 €



2791 recto/verso

- 2791 ✉ 1949, Great Britain, envelope franked at 2 1/2d, sent from London November 24, 1949 to East Sheen SW14 and forwarded to Leopoldville in Belgian Congo where it arrived December 16, 1949, with British boxed cachet "SURCHARGED OWING TO INSUFFICIENT POSTAGE PREPAID 2 1/2D INSTEAD OF 3D PLEASE ADVISE SENDER" (scarce) and "T 7c" mark, taxed at 1fr, paid on reverse side with 1fr brown (perf. 14x14 1/2) postage due stamp of the 1943 issue tied by Leopoldville cachet December 19, folded but still an exceptional cover 120 €



2792

- 2792 1956, France, front (only) of airmail envelope, franked at 40,15fr, sent from Lyon July 23, 1956 to Coquilhatville where it arrived August 7, French "T" mark under the stamps, taxed at 8fr, paid with 16x (including 2x blocks of 4) 50c green (perf. 14x14 1/2) postage due stamps of 1943 issue, tied by Coquilhatville-D cachet August 7, 1956, very impressive franking of this postage due 100 €

Belgian Congo - 1957 postage due issue



2793

- 2793 Belgian Congo, full set of 7 stamps of the postage due stamps 1957 issue, unperforated, gummed and unmounted, not so easy to find, very fine 20 €



2794

- 2794 ** Belgian Congo, 5 stamps of the postage due stamps 1957 issue 10, 20c, 50c, 2fr and 4fr, with engraver's signature Mr. Janssens on sheet margin, the 4fr with plate number "3", very scarce 80 €

- 2795 o 1957, Belgian Congo, 50c green postage due stamp of the 1957 issue, in block of 4, tied by "BUKAVU-1K" cachet (Heim & Keach type 10(-K)-) July 23, 1957, blocks of 4 used are very scarce 20 €
- 2796 o 1957-1959, Belgian Congo, 6 stamps of the postage due 1957 issue, all cancelled, 1fr (3x) (Leopoldville, Elisabethville and Stanleyville), 6fr (1x) (Leopoldville), 2fr (1x) (Elisabethville) and 4fr (1x) (Elisabethville), fine 16 €



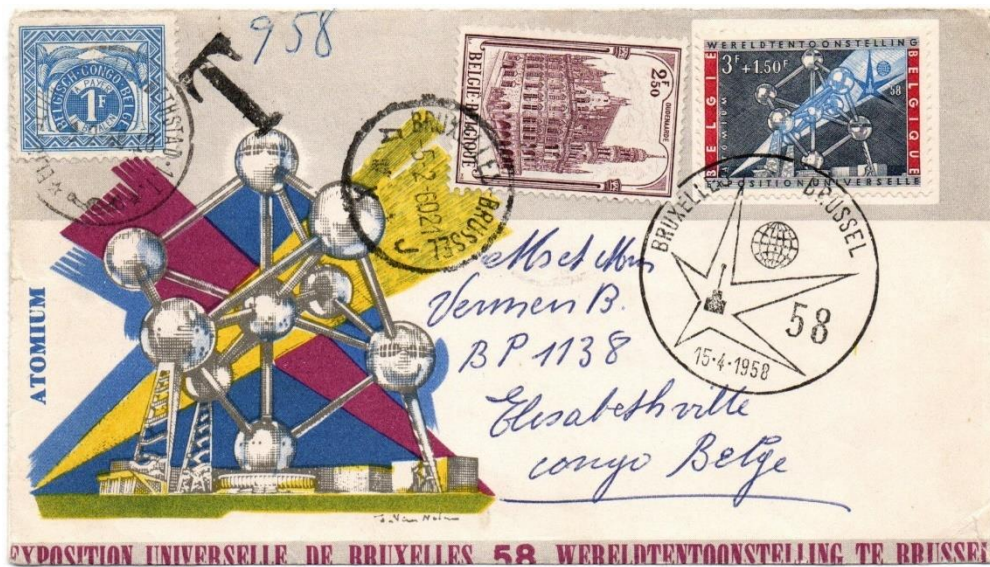
2795



2797 ☑

1959, Belgium, airmail picture postcard franked at 3,50fr (with 3fr type Baudouin Marchand), sent from Brussels "cachet diamant" December 29, 1959 to Elisabethville / Belgian Congo where it arrived January 11, 1960, rate of November 1, 1959 for greetings postcard 1fr + airmail 3fr/5gr = 4fr, with "T" mark in black, taxed at 1fr, paid with 1fr blue postage due stamp of the 1957 issue tied by Elisabethville cachet January 11, 1960, a very clean postcard, very fine

100 €



2798

- 2798 ☑ 1960, Belgium, envelope of the 1958 Universal Exhibition in Brussels, franked at 2,50fr (the 3fr+1,50fr of the FDC not included in franking), sent from Brussels February 5, 1960 to Elisabethville / Belgian Congo where it arrived February 8, 1960, rate of December 15, 1948 for surface cover to Belgian Congo 3fr, with "T" mark in black, taxed at 1fr, paid with 1fr blue postage due stamp of the 1957 issue, tied by Elisabethville cachet February 8, (via airmail but amount of tax not provided for), a very beautiful cover, very fine and interesting showing the 1fr stamp alone 100 €



2799

- 2799 1960, Belgium, airmail envelope franked at 6fr, sent from Brussels July 26, 1960 to Leopoldville XI / Lovanium / Republic of Congo where it arrived July 28, 1960, rate of June 30, 1960 for a cover to Congo via airmail 6,50fr, with bilingual boxed mark "Trouvé à la boîte / In de bus gevonden" and "T" mark in black, taxed at 1fr (double of the insufficiency), paid with a vertical pair of 50c green postage due stamps of the 1957 issue, tied by Leopoldville-11-Lovanium cachet July 28, 1960 the Republic of Congo never issue postage due stamps and still use the Belgian Congo stamps, superb cover, very scarce, very fine 100 €



2800

- 2800 1959, France, airmail picture postcard franked at 60fr, sent from Pontault-Combault September 1, 1959 to Stanleyville / Belgian Congo where it arrived September 7, 1959, with "T" mark and manuscript "0,06" (franc or), taxed at 1fr, paid with 1fr blue postage due stamp of the 1957 issue, tied by Stanleyville cachet September 7, 1959, very attractive postcard, very fine 100 €



2801

- 2801 1959, France, airmail picture postcard franked at 35fr, sent from Paris September 29, 1959 to Leopoldville / Belgian Congo where it arrived October 2, 1959, with French "T" mark and handwritten note "0,37" (franc or), taxed at 6fr, paid with 6fr blue-violet postage due stamp of the 1957 issue, tied by Leopoldville cachet October 3, 1959, nice postcard showing the usage of the 6fr alone, very fine 120 €



2802

- 2802 1958, France, airmail envelope franked at 45fr, sent from Marseille January 14, 1958 to Elisabethville / Belgian Congo where it arrived January 24, 1958, with French "T" mark and manuscript "T0,26", taxed at 4fr, paid with 4fr violet postage due stamp of the 1957 issue, tied by Elisabethville -C cachet January 24, 1958, nice cover showing the usage of the 4fr alone, very fine 100 €



2803

2803 ☒

1963, USA, airmail envelope franked at 15c, sent from Pearl River / New York September 17, 1963 to Leopoldville / Republic of Congo where it arrived September 23, 1963, circular cachet "T 60 centimes" in purple, taxed at 10fr, paid with 4fr violet and 6fr blue-violet postage due stamps of the 1957 issue, tied by Leopoldville cachet September 25, 1963, very fine cover showing the usage of the Belgian Congo stamps after the independence, very fine

100 €

2804 ☒

1959, South Africa, airmail picture postcard franked at 2 1/2d, sent from Scottbutech June 30, 1959 to Leopoldville / Belgian Congo, taxed at 2fr, paid with vertical pair of 1fr blue postage due stamps of the 1957 issue, stamps irregularly cancelled with a blue pen, an interesting postcard, very fine

50 €



2804

2805 ☒

1966, Republic of Congo, envelope franked at 2fr, sent from Leopoldville-1 in 1966 to Leopoldville, rate of May 1, 1964 for a domestic cover 6fr for first 10gr, with "T" mark and manuscript "8fr", taxed at 8fr (double of the insufficiency), paid with 6fr blue-violet Belgian Congo postage due stamp of the 1957 issue and vertical pair of 1fr Palace of the Nation issue (ordinary stamps), tied by Leopoldville-1J cachet August 5, 1966, superb and very scarce combination with ordinary stamps and postage due stamp

60 €



2805

Belgian Congo - 1957 postage due issue used as ordinary stamps



2806

- 2806 ✉ 1969, Republic of Congo, airmail express registered envelope franked with (3x) 100fr Belgian Congo Masks issue, 30fr Republic of Congo, 2k Rep. Dem. Congo and 4fr violet Belgian Congo postage due stamp of the 1957 issue used as ordinary stamp, sent from Idiofa-B May 17, 1969 to Chicago / USA where it arrived June 12, superb colourful franking, very fine 60 €

Belgian Congo - Airmail 1921 issue used as postage due stamps with overprint "T"

- 2807 o 1921, Belgian Congo, group of 2 stamps (used) 1fr of the Airmail 1921 issue, both overprinted "T" in black, scarce, very fine 12 €



2807

Belgian Congo - Vloors issue used as postage due stamps with overprint "T"

- 2808 * 1923, Belgian Congo, group of 10 stamps of the Vloors issue, all overprinted "TAXES" (different types) on 5c orange-yellow (7x), 20c olive-green (1x) stamp thinned, 50c grey-blue (2x), spectacular, for study 20 €
- 2809 */o 1923, Belgian Congo, group of 5 stamps of the 75c orange-red of the Vloors issue, all overprinted "TAXES" (different types) including two cancelled in Leopoldville and Elisabethville, very scarce value with overprints, for study 18 €
- 2810 o 1923, Belgian Congo, group of 7 stamps of the 10c green of the Vloors issue, all overprinted "TAXES" (different types) and used Bukama, Coquilhatville, Elisabethville, Leopoldville-1, Kinshasa, Lusambo and Albertville, 2 stamps creased, fine 14 €
- 2811 o 1923, Belgian Congo, group of 3 stamps of the 15c brown-grey of the Vloors issue, all overprinted "TAXES" (different types) and used Matadi, Lusambo and Rutshuru, very fine 6 €
- 2812 o 1923, Belgian Congo, group of 8 stamps of the 25c red-brown of the Vloors issue, all overprinted "TAXES" (different types) and used Coquilhatville, Stanleyville (in blue), Leopoldville, Bandundu, Kabalo, Matadi, Elisabethville and Kindu, the Kabalo stamp with crease, otherwise very fine lot 16 €
- 2813 o 1923, Belgian Congo, group of 25 stamps 10c green (7x), 15c brown-grey (7x) and 25c red-brown (11x) of the Vloors issue, all overprinted "TAXES" (different types) and used, quality to be checked, for study 20 €



2808 ex

2809 ex

2810 ex

2811 ex

2812 ex

Belgian Congo - Palms 1942 issue used as postage due stamps with overprint "T"

2814 o 1942, Belgian Congo, vertical pair of 2,50fr Palms 1942 issue 18 €
 overprinted "T" in black and tied by Kolwezi cachet December 4,
 1942, very scarce



2814



2815

2815 1942, Belgian Congo, envelope franked with 60c Palms 1942 issue, sent from Leopoldville October 18, 1942 to Matadi where it arrived October 20, 1942, on reverse Leopoldville1 cachet (Oct. 19), with "T" mark and manuscript "3,80" in pencil, rate of December 1, 1940 for domestic business papers first 50gr 2,50fr, taxed at 3,80fr (double of the insufficiency), paid with ordinary postage 3,50fr on 3fr airmail issue and 30c Palms 1942 issue overprinted "T" and tied by Matadi cachet (Oct. 21), cover crumpled and folded, so far the only known envelope showing an airmail stamp used as postage due stamp, great rarity 90 €



2816

- 2816 ✉ 1942, Belgian Congo, unfranked business envelope sent to Costermansville where it arrived July 10, 1942, rate of December 1, 1940 for a domestic cover 2,50fr for first 10gr + 75c/ extra 10gr (2x), taxed at 8fr (double of the insufficiency), paid with ordinary stamps 10c (3x), 15c and 25c Palms 1942 issue, horizontal pair of 1,25fr Native issue and horizontal pair of 2,40fr National Parks, all with overprint "T" and tied by Costermansville cachet July 10, 1942, very colourful postage due franking with 3 different issues, very fine 90 €



2817

- 2817 ✉ 1945, Belgian Congo, envelope franked with 25c Palms 1942 issue, sent from Jadotville April 2, 1945 to the town, rate of September 15, 1935 for cover sent within a 2 km radius of the depot post office 50c/50gr, with manuscript "T" in blue pencil, taxed at 50c (double of the insufficiency), paid with ordinary stamp 50c Palms 1942 issue overprinted "T" and tied by Jadotville cachet April 2, 1945, scarce rate, very fine 90 €



2818

- 2818 ✉ 1946, Belgian Congo, envelope franked with 50c Palms 1942 issue, sent from Leopoldville in 1946 to Monkoto, reverse Coquilhatville (August 10), rate of August 1, 1946 for domestic cover between natives 1,25fr for first 10gr, with "T" mark, taxed at 1,50fr (double of the insufficiency), paid with ordinary stamps half 1fr (cut vertically) and 1fr of the Palms 1942 issue, tied by Monkoto cachet, a fine example of cut stamp from the "Monkoto" archive, very fine 150 €



2819

- 2819 ✉ 1947, Belgian Congo, envelope franked with 2,50fr Palms 1942 issue, sent from Costermansville May 29, 1947 to Kindu where it arrived June 2, 1947, rate of August 1, 1946 for domestic cover 2,50fr for first 10gr + 75c each sup. 10gr, taxed at 1,50fr (double of the insufficiency), paid with horizontal strip of 3 stamps of 50c Palms 1942 issue overprinted with "T", not cancelled (scarce), cover folded but still interesting and rare 90 €



2820 recto/verso

- 2820 ✉ 1946, Belgian Congo, envelope franked with horizontal strip of 3 of 50c Palms 1942 issue, sent from Elisabethville April 2, 1946 to Jadotville where it arrived April 4, 1946, rate of September 15, 1945 for domestic cover 2,50fr for first 10gr, taxed at 2fr (double of the insufficiency), paid with ordinary stamps (1x) 20c and horizontal strip of 3 of the 60c Palms 1942 issue all with overprint "T" and tied by Jadotville cachet April 6, 1946, very impressive franking of ordinary stamp used as postage due, very fine 90 €

Belgian Congo - Palms 1942 issue used as postage due stamps without overprint "T"



2821 ✉

- 1945, Belgian Congo, envelope franked with horizontal pair of 1,25fr Palms 1942 issue, sent from Boma June 10, 1945 to Leopoldville where it arrived June 13, forwarded to Leopoldville-Kalina (June 14), with "T" mark and manuscript "1,50", rate of December 1, 1940 for a domestic cover 2,50fr for first 10gr + 75c/ extra 10gr, taxed at 1,25fr (double of the insufficiency), paid with ordinary stamps horizontal pair of 75c Palms 1942 issue tied by Kalina cachet June 14, stamps not overprinted by "T" mark are scarce, archiving holes 90 €

2821



2822 recto/verso

- 2822 ✉ 1946, Ruanda Urundi, envelope franked with 75c (2x) Palms 1942 issue, sent from Usumbura March 26, 1946 to Leopoldville Belgian Congo where it arrived March 29, with "T" mark and manuscript "2," rate of December 1, 1940 for a domestic cover 2,50fr for first 10gr, taxed at 2fr (double of the insufficiency), paid with ordinary stamps horizontal pair of 25c and horizontal pair of 75c of the Palms 1942 issue tied by Leopoldville cachet April 4, 1946, stamps not overprinted by "T" mark are scarce, very fine 90 €



2823

- 2823 ✉ 1948, Belgian Congo, envelope franked with (10x) 15c and (1x) 5c Palms 1942 issue, sent from Goma February 21, 1948 to Costermansville where it arrived February 23, 1948, rate of August 1, 1946 for domestic cover 2,50fr for first 10gr, taxed at 95c (only the simple of the insufficiency), paid with ordinary stamps 20c and 75c Palms 1942 issue tied by Costermansville cachet February 23, stamps not overprinted by "T" mark are scarce, very fine 90 €



2824 recto/verso

- 2824 1945, Great Britain, envelope franked at 2 12d, sent from London March 2, 1945 to Leopoldville / Belgian Congo where it arrived May 26, 1945, with British mark "T" and handwritten note "8" in pencil, taxed at 1,20fr, paid on reverse side with ordinary stamps (4x) 5c and horizontal pair 50c Palms 1942 issue tied by Leopoldville cachet May 26, 1945, stamps not overprinted by "T" mark are scarce, with British censor tape "OPENED BY EXAMINER 3626 P.C. 90", very fine and attractive 90 €



2825 recto/verso

- 2825 1945, Great Britain, envelope franked at 2 12d, sent from Reigate & Redhill July 26, 1945 to Leopoldville / Belgian Congo where it arrived September 12, 1945, with British mark "T" and handwritten note "8" in pencil, taxed at 1,20fr, paid with ordinary stamps (horizontal strip of 4) 5c and 1fr Palms 1942 issue tied by Leopoldville cachet September 17, 1945, stamps not overprinted by "T" mark are scarce, with British censor tape "OPENED BY EXAMINER 790 P.C. 90", very fine 90 €

Belgian Congo - Flowers issue used as postage due stamps without overprint "T"



2826

- 2826 1955, Belgian Congo, envelope franked with 50c (2x) Flowers issue, sent from Matadi February 19, 1955 to Leopoldville where it arrived February 21, with "T" mark, rate of April 1, 1950 for domestic cover 3fr/10gr, taxed at 1fr (double of the insufficiency), paid with ordinary stamp 4fr Flowers issue tied by Leopoldville-1L cachet February 23, 1955, stamps not overprinted by "T" mark are scarce, very fine and clean cover 70 €



2827

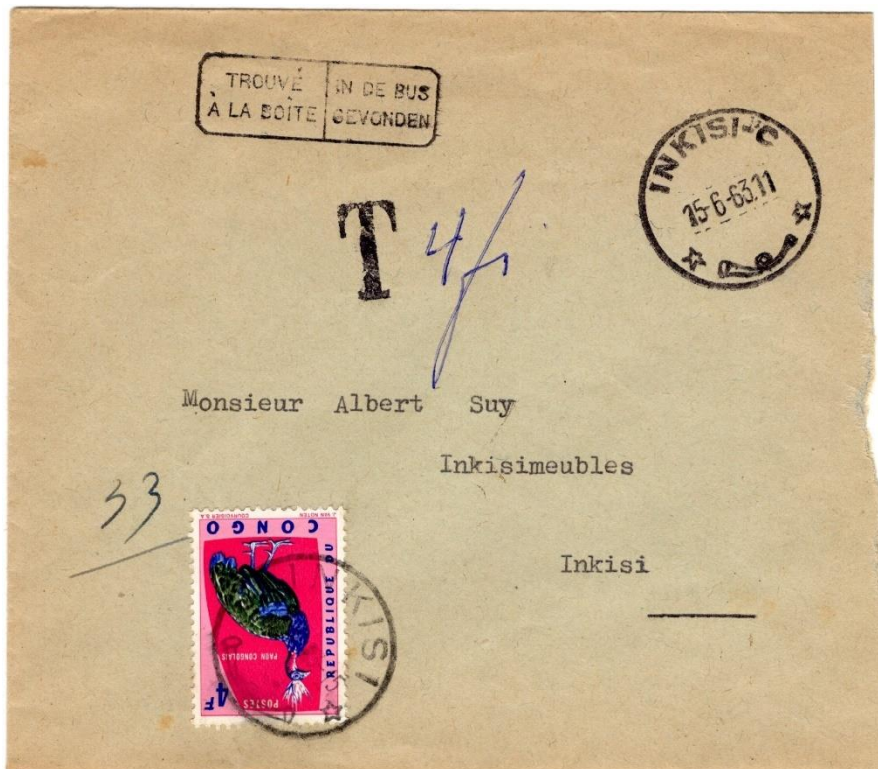
- 2827 1959, Belgian Congo, unfranked envelope, sent from Leopoldville-1R October 13, 1959 to the town, rate of October 1, 1958 for domestic cover sent within a 3 km radius of the depot post office 1,50fr/50gr, with "T" mark and manuscript "3fr", taxed at 3fr (double of the insufficiency), paid with ordinary stamps (horizontal strip of 3) 3fr Flowers issue tied by Leopoldville-1Y cachet October 15, 1959, stamps not overprinted by "T" mark are scarce, very fine and clean cover, archiving holes 70 €



2828

- 2828 ✉ 1957, France, airmail envelope (reverse flap missing), franked at 33fr, sent from Paris June 13, 1957 to Leopoldville / Belgian Congo where it arrived June 18, 1957, taxed at 24fr, paid with ordinary stamps horizontal strip of 3 of 8fr Flowers issue, tied by Leopoldville-1Z cachet June 19, 1957, stamps not overprinted by "T" mark are scarce 70 €

Republic of Congo - Ordinary stamps used as postage due



2829

2829 ✉

- 1963, Republic of Congo, unfranked envelope, sent from Inkisi-C June 15, 1963 to the town, rate for domestic cover sent within a 3 km radius of the depot post office 2fr/50gr, with bilingual boxed mark "Trouvé à la boîte / in the bus gevonden", "T" mark and manuscript "4fr", paid with ordinary stamp 4fr Birds issue (without overprint "T") tied by Inkisi cachet June 17, 1963, very fine, great rarity of the Republic of Congo postal history

50 €

Ruanda Urundi - 1924 postage due issue



2830

- 2830 o 1933, Ruanda Urundi, 1fr grey Belgian Congo postage due stamp of the 1924 issue overprinted "RUANDA URUNDI", in block of 4, tied by "USUMBURA cachet (Heim & Keach type 7), blocks of 4 used are very scarce, definitely a rare block 30 €



2831 recto/verso

- 2831 ✉ 1927, Uganda, envelope franked on reverse at 20c, sent from Kampala January 18, 1927 to Kigali / Ruanda Urundi where it arrived February 10, via Entebbe (Jan. 19), with Ugandan "T" mark, taxed at 1fr, paid with 1fr grey Belgian Congo postage due stamp of the 1924 issue overprinted "RUANDA URUNDI" tied by Kigali cachet February 10, very fine and scarce, great rarity 300 €

2832

1950, Germany DDR, airmail envelope franked at 54c, sent from Berlin July 25, 1950 to Usumbura / Ruanda Urundi in "poste restante", with manuscript "T" mark in blue, paid with 1fr grey Belgian Congo postage due stamp of the 1924 issue overprinted "RUANDA URUNDI" tied by Usumbura October 9, 1950, very late usage of this issue, superb and very scarce

250 €



2832

Ruanda Urundi - 1924 postage due issue used as ordinary stamps - Stamps lack period



2833

2833

1942, Ruanda Urundi, airmail envelope franked with horizontal pair 5fr Natives issue and 1fr grey Belgian Congo postage due stamp of 1924 issue overprinted "RUANDA URUNDI" used as ordinary stamp, sent from Usumbura January 26, 1942 to Birmingham / Great Britain, with Usumbura straight-line mark of censor "CENSURE CONGO BELGE" type Baa in violet, censor tape and cachet of Tokoradi, very fine and a scarce cover

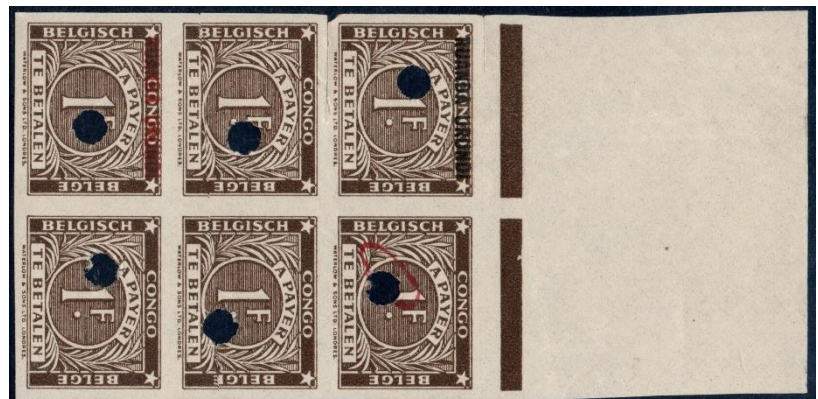
240 €

Ruanda Urundi - 1943 postage due issue - perforation 12 ½

2834

1fr brown Belgian Congo postage due of 1943 issue in block of 6 stamps unperforated and gummed, MNH (with upper margin of sheet), showing essays of unadopted overprint "RUANDA URUNDI" (straight-line) in black (first stamp - sheet position #2) and "RUANDA URUNDI" (straight-line) in red (fifth stamp - sheet position #32), all stamps punched hole, unique, great rarity of the Ruanda Urundi, very impressive, masterpiece

240 €



2834



2835

- 2835 ✉ 1952, ONU, envelope franked at 3c, sent from New York / USA April 3, 1952 to Astrida / Ruanda Urundi where it arrived April 29, 1952, in "poste restante", with manuscript "T" mark in blue, paid with 10c olive (perf. 12 1/2), 50c green (perf. 12 1/2) and 1fr brown (perf. 12 1/2) Belgian Congo postage due stamps of 1943 issue overprinted "RUANDA URUNDI" in red and tied by Astrida cachet April 29, 1952 superb and very clean cover, the perforation 12 1/2 is extremely scarce 240 €

Ruanda Urundi - 1943 postage due issue - perforation 14x14 ½



2836

- 2836 ✉ 1962, Ruanda Urundi, business envelope franked with 1,50fr Flowers issue, sent from Usumbura May 16, 1962 to the town, rate for domestic cover 3,50fr, taxed at 2fr (simple of the insufficiency), paid with 2fr orange (perf. 14x14 1/2) Belgian Congo postage due stamps of 1943 issue overprinted "RUANDA URUNDI" in red and tied by Usumbura 1 Mandats cachet June 2, 1962, very scarce cover 120 €



2837 ☑

1967, Burundi, airmail envelope franked at 2,50fr, sent from Bubanza-A July 18, 1967 to Bujumbura where it arrived July 24, 1967, with "T" mark and handwritten note "5fr" in green, taxed at 5fr, with 1fr brown (perf. 14x14 1/2) and 2fr orange (perf. 14x14 1/2) Belgian Congo postage due stamps of 1943 issue overprinted "RUANDA URUNDI" in red and ordinary stamps (2x) 1fr African Art 1967 issue, tied by Usumbura 1 Mandats cachet and manuscript note of the postmaster "avisé 26/7", ex Celis, a scarce cover showing combination of postage due stamps and ordinary stamps, very fine

90 €

2837



2838 recto/verso

2838 ☑ 1967, France, airmail envelope franked at 0,30fr, sent from Morlaix January 24, 1967 to Usumbura in Burundi where it arrived April 27, with French boxed mark "Trouvé à la boîte", "T" mark and manuscript "60/60", "T6" and "By air mail" label crossed out and note in upper left corner "Voie maritime", taxed at 1fr, paid on reverse side with 1fr brown (perf. 14x14 1/2) and 2fr (5x) orange (perf. 14x14 1/2) Belgian Congo postage due stamps of 1943 issue overprinted "RUANDA URUNDI" in red and tied by Usumbura 1 Mandats cachet June 14, 1967 and manuscript note of the postmaster "13.4.67", "14.4.67", "avisé 27/4" and "rappel 14/6", very scarce

90 €

Ruanda Urundi - 1943 postage due issue used as ordinary stamps - Stamps lack period



2839

- 2839 1949, Ruanda Urundi, envelope franked with horizontal pair 75c Masks issue and horizontal pair of 50c green (perf. 14x14 1/2) Belgian Congo postage due stamps of 1943 issue overprinted "RUANDA URUNDI" used as ordinary stamps, sent from Usumbura-A December 17, 1949 to Costermansville in Belgian Congo where it arrived December 18 (error of dater 8 instead of 18), rate of December 1, 1940 for domestic cover 2,50fr for first 10gr, correctly franked, very fine 90 €

2840

1949, Ruanda Urundi, envelope franked with horizontal pair 40c Masks issue, horizontal pair 60c Palms 1942 issue and 50c green (perf. 14x14 1/2) Belgian Congo postage due stamp of 1943 issue overprinted "RUANDA URUNDI" used as ordinary stamps, sent from Usumbura October 3, 1949 to Costermansville in Belgian Congo where it arrived October 4, 1949, rate of December 1, 1940 for domestic cover 2,50fr for first 10gr, correctly franked, very fine

80 €



2840



2841

- 2841 ✉ 1949, Ruanda Urundi, envelope franked with 50c Masks issue and (2x) 1fr brown (perf. 14x14 1/2) 90 €
 Belgian Congo postage due stamps of 1943 issue overprinted "RUANDA URUNDI" used as ordinary stamps, sent from Usumbura-A December 17, 1949 to Costermansville in Belgian Congo where it arrived December 18 (error of dater 8 instead of 18), rate of December 1, 1940 for domestic cover 2,50fr for first 10gr, correctly franked, very fine



2842

- 2842 ✉ 1949, Ruanda Urundi, envelope franked with 1fr Masks issue, 1fr brown (perf. 14x14 1/2) and 50c green (perf. 14x14 1/2) Belgian Congo postage due stamps of 1943 issue overprinted "RUANDA URUNDI" used as ordinary stamps, sent from Usumbura-A December 6, 1949 to the town, rate of December 1, 1940 for domestic cover 2,50fr for first 10gr, correctly franked, very fine



2843

- 2843 ✉ 1949, Ruanda Urundi, envelope franked with (2x) 25c Masks issue and horizontal pair of 1fr brown (perf. 14x14 1/2) Belgian Congo postage due stamps of 1943 issue overprinted "RUANDA URUNDI" used as ordinary stamps, written at Kayanza, sent from Usumbura November 23, 1949 to Leopoldville / Belgian Congo where it arrived November 26, rate of December 1, 1940 for domestic cover 2,50fr for first 10gr, correctly franked, very fine 90 €



2844

- 2844 ✉ 1949, Ruanda Urundi, envelope franked with 50c green (perf. 14x14 1/2) and 2fr orange (perf. 14x14 1/2) Belgian Congo postage due stamps of 1943 issue overprinted "RUANDA URUNDI" used as ordinary stamps, sent from Usumbura September 10, 1949 to Kindu / Belgian Congo where it arrived September 13, rate of December 1, 1940 for domestic cover 2,50fr for first 10gr, correctly franked, scarce with only postage due issue for franking, very fine 100 €



2845

- 2845 ✉ 1949, Ruanda Urundi, envelope franked with horizontal strip of 5 stamps of 50c green (perf. 14x14 1/2) 120 €
Belgian Congo postage due stamps of 1943 issue overprinted "RUANDA URUNDI" used as ordinary stamps, sent from Usumbura December 5, 1949 to the town, rate of December 1, 1940 for domestic cover 2,50fr for first 10gr, correctly franked, scarce with only postage due issue for franking, very fine



2846

- 2846 ✉ 1949, Ruanda Urundi, envelope franked with horizontal pair + 1 of 50c green (perf. 14x14 1/2) and 1fr 100 €
brown (perf. 14x14 1/2) Belgian Congo postage due stamps of 1943 issue overprinted "RUANDA URUNDI" used as ordinary stamps, sent from Usumbura December 5, 1949 to the town, rate of December 1, 1940 for domestic cover 2,50fr for first 10gr, correctly franked, scarce with only postage due issue for franking, very fine

Ruanda Urundi - 1959 postage due issue



2847

- 2847 ✉ 1962, Ruanda Urundi, business envelope franked with 1,50fr Flowers issue, sent from Usumbura May 16, 1962 to the town, rate for domestic cover 3,50fr, taxed at 6fr (incorrect tax calculation), 6fr blue-violet Belgian Congo postage due stamp of 1957 issue overprinted "RUANDA URUNDI" tied by Usumbura 1 Mandats cachet June 2, 1962, very scarce cover 120 €



2848

- 2848 ✉ 1962, Ruanda Urundi, part of envelope franked with 1,50fr Flowers issue, sent from Usumbura May 15, 1962 to the town (business mail), rate of October 1, 1958 for cover sent within a 3 km radius of the depot post office 1,50fr, (why taxation?), taxed at 4,50fr paid with 50c green (perf. 14x14 1/2) Belgian Congo postage due stamp of 1943 issue overprinted "RUANDA URUNDI", 4fr violet Belgian Congo postage due stamp of 1957 issue overprinted "RUANDA URUNDI" tied by Usumbura-1 Mandats cachet, a rare combination of two postage due issues 1943 & 1959, very fine 80 €



2849 recto/verso

- 2849 ✉ 1961, Germany Bund, airmail envelope franked at 70, sent from Fulda November 3, 1961 to Usumbura / Ruanda Urundi where it arrived November 13, 1961, with manuscript "T" in red and notes "6g" and "0,60 frs d'or", taxed at 15,60fr, paid with horizontal pair 10c olive, horizontal pair 20c blue, vertical pair 50c green, horizontal pair 1fr brown, (2x) 2fr orange (all perf. 14x14 1/2) Belgian Congo postage due stamps of 1943 issue overprinted "RUANDA URUNDI" and vertical pair 4fr violet Belgian Congo postage due stamp of 1957 issue overprinted "RUANDA URUNDI" tied by Usumbura-1B cachet November 13, 1961, very impressive cover 80 €

2850 ✉

1967, France, airmail envelope franked at 30c, sent from Paris November 16, 1967 to Bujumbura / Burundi, with handwritten note "T=60/60" and "11f", taxed at 11fr, paid with 1fr brown (perf. 14x14 1/2) Belgian Congo postage due stamp of 1943 issue overprinted "RUANDA URUNDI", 4fr violet and 6fr blue-violet Belgian Congo postage due stamps of 1957 issue overprinted "RUANDA URUNDI" tied by Usumbura-1 Mandats cachet February 28, 1968, the cover was carried by surface mail, a rare combination of two postage due issues 1943 & 1959, very fine

70 €



2850

Rwanda - ordinary stamps used as postage due stamps


2851

- 2851 ✉ 1985, Republic of Niger, airmail envelope franked at 110fr, sent from Niamey February 26, 1985 to Kigali / Rwanda in "poste restante" where it arrived March 2, 1985 (on reverse side), taxed at 20fr, paid with 20fr of the 20th anniversary of the Independence 1982 issue tied by Kigali-J cachet March 3, 1985, very clean cover 30 €



LINDEKENS

Philatelic Auctions

Tel : +32 470 84 23 66

E-mail : info@lindekensauctions.com

www.lindekensauctions.com