

# LINDEKENS Philatelic Auctions

auction 2025-1

*The "Kivu" collection*

*Belgian Congo and Ruanda Urundi postage due*

*Part 1*



Brussels - 18 January, 2025



LINDEKENS

Philatelic Auctions

# Auction 2025-1

**Vente aux enchères sur (Internet) philasearch.com**

Cette vente aux enchères sur philasearch.com aura lieu le **18 janvier 2025**

La vente commence **à 9:00h**

**Live (Internet) Auction on philasearch.com**

This live auction on philasearch.com will be held **January 18, 2025**

The auction start at **9:00h** a.m.

- 2001 – 2090** The “KIVU” collection – Belgian Congo and Ruanda Urundi postage due (Part. 1)  
**1000 – 1621** The “general sale”  
**2500 – 2671** The “TANGER” collection – Spanish Morocco – censored mails 1936-1945



# LINDEKENS

Philatelic Auctions

Tel : +32 470 84 23 66

E-mail : [info@lindekensauctions.com](mailto:info@lindekensauctions.com)

[www.lindekensauctions.com](http://www.lindekensauctions.com)

## Conditions de vente

1. La vente se fait en euros et au comptant plus 20% de commission, tous frais légaux compris + 1€ par lot acheté.
2. L'ordre des surenchères est fixé comme suit :  
 De 4 euros à 50 euros : 2 euros  
 De 50 euros à 100 euros : 5 euros  
 De 100 euros à 300 euros : 10 euros  
 De 300 euros à 700 euros : 20 euros  
 De 700 euros à 2000 euros : 50 euros  
 De 2000 euros à 5.000 euros : 100 euros  
 De 5.000 euros à 10.000 euros : 200 euros  
 De 10.000 euros à 20.000 euros : 500 euros  
 > 20.000 euros : 1.000 euros
3. Les ordres seront exécutés sans frais supplémentaires en euros. En cas d'offres identiques pour un même lot, celui-ci sera attribué au 1<sup>er</sup> ordre reçu. Nous n'accepterons pas les ordres inférieurs aux prix de départ.
4. L'organisateur a seul le droit de scinder un lot ou de rassembler plusieurs lots en un seul, s'il le juge utile.
5. Les frais d'expédition, d'assurance, paypal et de banques (les chèques ne sont pas acceptés) sont à charge de l'acheteur.
6. Tous les lots sont authentiques et garantis conformes à la description. Nous reprendrons les lots qui feront l'objet d'une réclamation justifiée par l'avis d'un expert autorisé. Cette reprise doit se faire endéans les 28 jours calendrier suivant l'adjudication.
7. Les lots composés de plus de 3 timbres ou 2 enveloppes ou 2 objets postaux et les défauts apparents sur photo ne seront pas repris.
8. Toute demande de crédit doit être formulée avant la vente et avoir fait l'objet de notre approbation écrite.
9. Les lots invendus ne seront pas disponibles après la vente.
10. Les lots seront expédiés une fois le paiement reçu, sauf accord préalable écrit avant la vente.
11. Le transfert de propriété se produit au moment du paiement intégral des lots (frais de commissions compris).
12. Si le paiement dû par l'acheteur n'intervient pas dans les 15 jours à compter de la date de facturation, le montant dû sera majoré automatiquement d'un intérêt de retard calculé au taux d'un pour cent (1%) par période de 30 jours entamée. Cet intérêt commence à courir le lendemain du jour de l'échéance sans notification.
13. Nous nous réservons aussi le droit d'annuler la vente après 15 jours + 1 jour.
14. Pour le règlement de tous les différends qui pourraient survenir, les Tribunaux de Bruxelles sont seuls compétents.
15. En cas de contradiction, seul le règlement en langue française est d'application.

### Symboles

Neuf sans charnière	**	Unmounted Mint	MNH
Neuf avec charnière	*	Mint and hinged	LH
Oblitéré	o	Used	
Oblitéré sur lettre, entier postal,...	✉	Used on cover, postal stationery,...	
Non dentelé	☐	Unperforated	

### Vision des lots

**Uniquement sur rendez-vous :**

6 janvier au 11 janvier 2025

13 janvier au 15 janvier 2025

### Contact

Thomas Lindekens  
 Tel : +32 470 84 23 66

E-mail :

[info@lindekensauctions.com](mailto:info@lindekensauctions.com)

[www.lindekensauctions.com](http://www.lindekensauctions.com)

## Sale terms

1. The sale is made in euros and purchase plus 20% commission, including all legal fees + 1€ per bought lot.
2. The order of the step bids is as follows:  
From €4 to €50: €2  
From 50 euros to 100 euros: 5 euros  
From 100 euros to 300 euros: 10 euros  
From 300 euros to 700 euros: 20 euros  
From 700 euros to 2,000 euros: 50 euros  
From €2,000 to €5,000: €100  
From €5,000 to €10,000: €200  
From €10,000 to €20,000: €500  
More than 20,000 euros: 1,000 euros
3. Orders will be executed free of charge in euros. In the event of identical bids for the same lot, the lot will be awarded to the 1st order received. We will not accept orders below the starting prices.
4. The organiser alone has the right to split a lot or to combine several lots into a single lot, if he deems this appropriate.
5. Shipping, insurance, paypal and bank charges (cheques are not accepted) are at the buyer's expense.
6. All lots are authentic and guaranteed to conform to the description. We will take back

- lots that are the subject of a claim justified by the opinion of an authorized expert. This must be done within 28 calendar days of the auction.
7. Lots consisting of more than 3 stamps or 2 envelopes or 2 postal items and apparent defects in photographs/scans will not be taken back.
8. Any request for credit must be made prior to the sale and must be approved by us in writing.
9. Unsold lots will not be available after the sale.
10. Lots will be dispatched once payment has been received, unless otherwise agreed in writing prior to the sale.
11. Transfer of ownership occurs upon full payment of the lots (including commission).
12. If payment is not received from the buyer within 15 days of the invoice date, the amount due will automatically be increased by late payment interest calculated at the rate of one percent (1%) per 30-day period commenced. This interest starts to run the day after the due date without notification.
13. We also reserve the right to cancel the sale after 15 days + 1 day.
14. For the settlement of any disputes that may arise, the Courts of Brussels shall have sole jurisdiction.
15. In the event of contradiction, only the rules in French shall apply.

### Symboles

Neuf sans charnière	**	Unmounted Mint	MNH
Neuf avec charnière	*	Mint and hinged	LH
Oblitéré	o	Used	
Oblitéré sur lettre, entier postal,...	✉	Used on cover, postal stationery,...	
Non dentelé	☐	Unperforated	

### Viewing lots

**By appointment only**  
From 6 January to 11 January 2025  
From 13 January to 15 January 2025

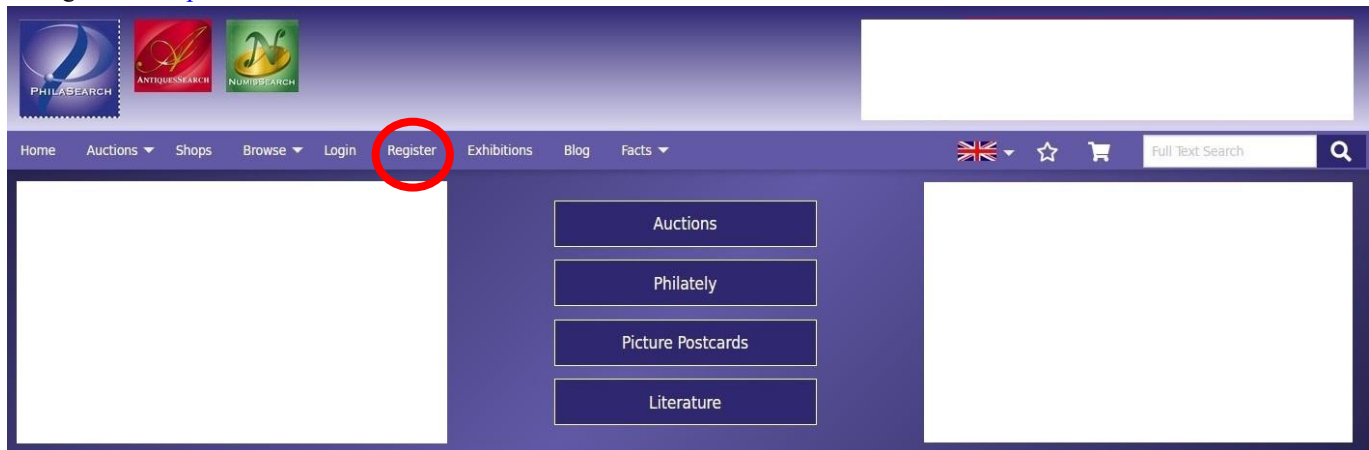
### Contact

Thomas Lindekens  
Tel : +32 470 84 23 66

E-mail :  
[info@lindekensauctions.com](mailto:info@lindekensauctions.com)  
[www.lindekensauctions.com](http://www.lindekensauctions.com)

## Comment participer à nos ventes aux enchères sur (Internet) via philasearch.com How to join our live (Internet) Auction on philasearch.com

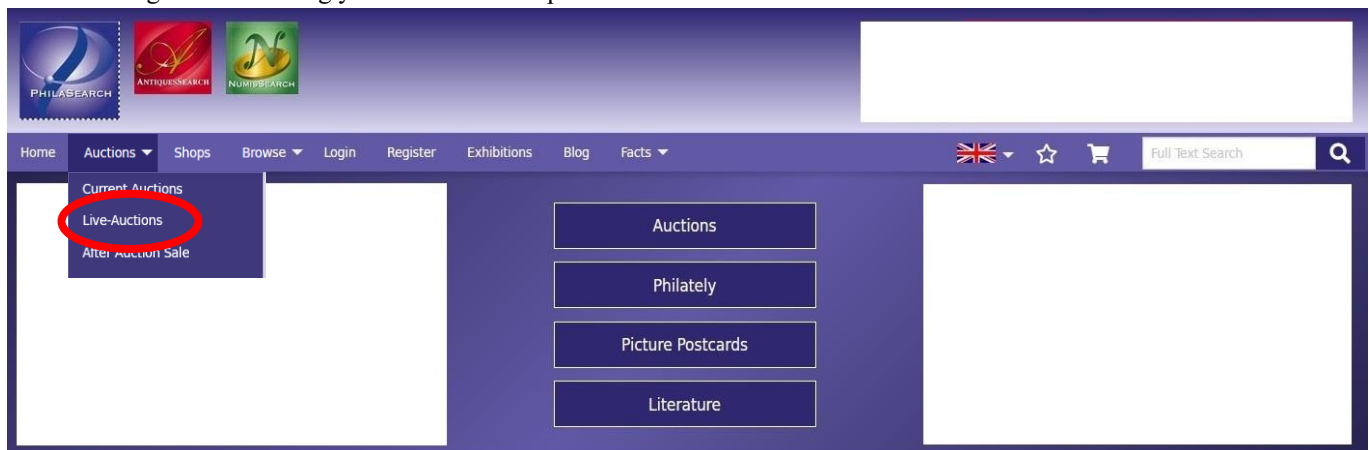
First go to [www.philasearch.com](http://www.philasearch.com)



Click on “Register” (if you don’t have yet an account)

Give your personal details, choose username and password, agree to terms and conditions and submit the registration form. Once your account is active (check your email),

Click on “Login” and entering your username and password.



Then click on Auctions, select Live-auctions.

**Live Online Auctions**

Bid “live” from the comfort of your home  
Do not miss any more bargains and participate directly. Live Auctions can be actual floor auctions that have integrated “live” bidding via the internet in realtime (LIVE), as well as automated realtime internet auctions conducted by our “virtual” auctioneer (ONLINE LIVE).

To participate on your PC or your mobile device, a stable internet connection is required. Our recommendations include a connection speed of at least 2 MBits (broadband/optical fiber connection) as well as a current web browser (Mozilla Firefox, Google Chrome, Microsoft Edge) and JavaScript active.

Start Simulator for Liveauction  
The simulator does not record any bids - feel free to try out everything!

**Important:**  
Some auctions require a special registration to participate. This registration should take place **at least 24 hours before the auction starts**. In general, admission approval policies are subject to the auction company's discretion. These auctions are labeled as **W/ REGISTRATION**.

**Please note:**  
If you do not want to miss your chance of bidding, you can add bookmarks for lots you are interested in. The auctioneer will then be notified that a potential live bidder is available for these lots - of course without transferring any personal information. To add a bookmark, click on “Add to Bookmarks” on the respective lots' detail page. The bookmark list will also display a detailed overview for you to use as a referral during the auction.

**Just a few hints for your successful participation:**

- Take your time to browse interesting offers prior to the auction.
- Take notes of the lot numbers you would like to bid on, and decide on the highest price you are willing to pay.
- You may place your bids prior to the auction and intercept during the live auction only if you are outbid.
- If you have any questions, please contact the auction company in due time prior to the auction.

Category	Auction Details	Action
W/ REGISTRATION	<b>ONLINE LIVE</b> A different live auction 27. APRIL 2021 20:00 CEST Show lots Timetable	Start simulator Start bidding Start as guest without bidding
W/ REGISTRATION	<b>LIVE</b> The live auction you would like to join APRIL 27TH - 28TH, 2021 FROM 27. APRIL 2021 10:30 CEST Show lots Timetable	Register Start as guest without bidding
APPROVED	<b>LIVE</b> A different live auction APRIL 27-30, 2021 FROM 27. APRIL 2021 00:30 CEST REGISTRATION DEADLINE: 30. APRIL 2021 18:00 CEST Show lots	Start bidding Start as guest without bidding
W/ REGISTRATION	<b>ONLINE LIVE</b> Another different live auction 30. APRIL 2021 10:00 CEST Show lots Timetable	Register Start as guest without bidding

Click on “Register”, (in the right column under Lindekensauctions).

Then follow the procedure.

**Visitez notre web site/ Visit our website :**

[www.lindekensauctions.com](http://www.lindekensauctions.com)



The screenshot shows the Lindekens website home page. At the top left is the Lindekens logo. To its right is a blue header with the text "Accueil Home". Below the header is a main content area with the heading "Vente aux enchères sur Internet" and the date "18 janvier 2025". Underneath is "Live Internet Auction" with the date "January 18, 2025". There are three featured auction items, each with a thumbnail image of stamps and a "Télécharger PDF / Download PDF" link. A left-hand navigation menu contains links for "Accueil Home", "Conditions de vente / Sale terms", "Descriptions de collections / Description of collections", "Expertise", "A propos / About", and "Contact".

**Auction Agent:**



**Love Auctions**

Nick Martin FRPSL

Address: 2 Field View  
Ashton Road  
Siddington  
Cirencester  
Gloucestershire  
GL7 6HB

Mobile: 07703 766477

Website: [www.loveauctions.co.uk](http://www.loveauctions.co.uk)



# The “Kivu” collection

## Belgian Congo and Ruanda Urundi postage due

### Part 1

Lindekens Philatelic auctions is proud to present this collection of Belgian Congo and Ruanda Urundi postage due stamps for sale. This unique collection has been awarded a national gold medal. It took almost 40 years to assemble this formidable collection. It will be sold in two special sales.

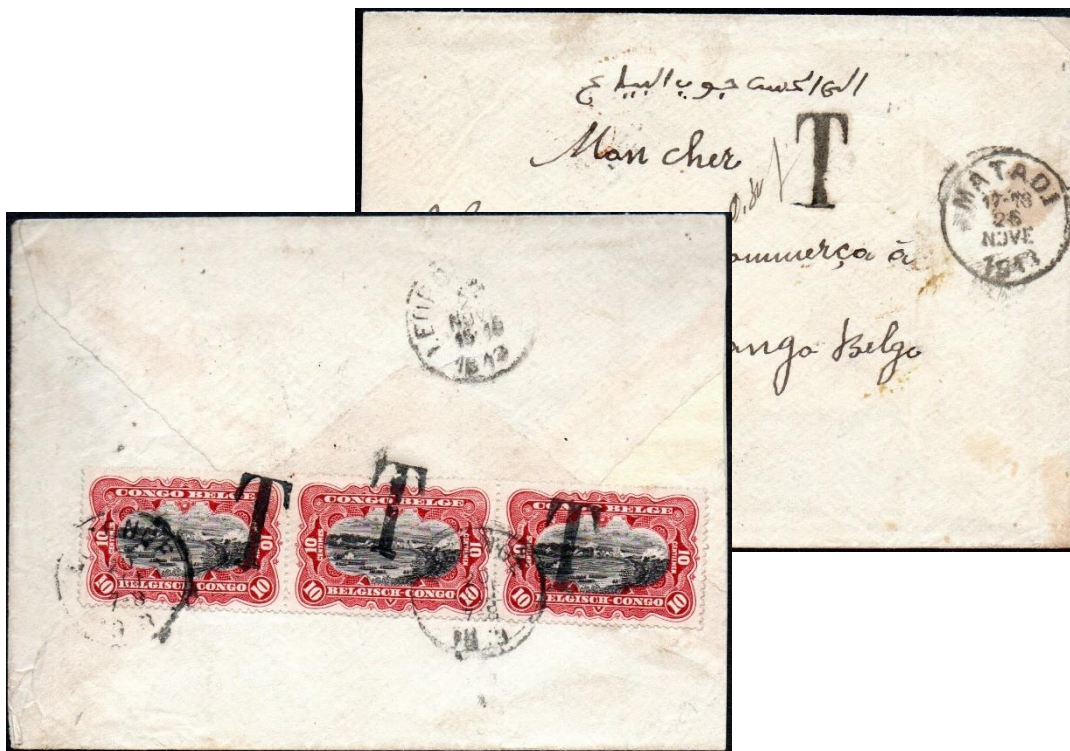
Divided it into chapters:

	Lots		Lots
Belgian Congo - Mols bilingual 1910 issue - used as postage due stamps	2000-2005	Ruanda Urundi - Mols issue used as postage due stamps	2076
Belgian Congo - Mols bilingual 1915 issue - used as postage due stamps	2006-2014	Ruanda Urundi - 1924 postage due issue	2077-2078
Belgian Congo - 1923 postage due issue	2015-2035	Ruanda Urundi - 1924 postage due issue used as ordinary stamps - Stamps lack period	2079
Belgian Congo - 1923 postage due issue used as ordinary stamps - Stamps lack period	2036-2037	Ruanda Urundi - 1943 postage due issue - perforation 12 1/2	2080-2081
Belgian Congo - 1943 postage due issue - perforation 12 ½	2038-2039	Ruanda Urundi - 1943 postage due issue - perforation 14x14 1/2	2082-2083
Belgian Congo - 1943 postage due issue - perforation 14 x 14 1/2	2040-2055	Ruanda Urundi - 1943 postage due issue used as ordinary stamps - Stamps lack period	2084-2088
Belgian Congo - 1957 postage due issue	2056-2065	Ruanda Urundi - 1959 postage due issue	2089
Belgian Congo - ordinary stamps used as postage due stamps	2066-2075	Ruanda Urundi - ordinary stamps used as postage due stamps	2090

Taxed mail from the Belgian Congo and Ruanda Urundi are extremely scarce. In this collection you will have the opportunity to acquire unique documents. What's more, some of the letters come from prestigious collectors from our former colonies (Frenay, Du Four, Herreweghe, Jeukens). It's an unique opportunity to acquire exceptional pieces to complete your collection or to start a new chapter in your collection.



**Belgian Congo - Mols bilingual 1910 issue - used as postage due stamps**



2000 – recto/verso

2001  1913, Belgian Congo, unfranked envelope sent from Matadi November 26, 1913 to Libenge via Leopoldville (Nov. 28), with "T" mark and manuscript "0,30f" (double of the insufficiency). Rate of April 1, 1910 for domestic mail 15c/15gr, paid on reverse with vertical strip of 3 of 10c carmine Mols bilingual 1910 issue (plate III1 - position #13-14-15), with "T" mark (type I) as overprint instead of "TAXES" overprint (type IX), applied and cancelled at Libenge (Dec. 20), opened for exhibition very fine and scarce cover showing Mols used as postage due, very fine, with Lindekens and Luc Vander Marcken certificates

200 €



2002

2002  1915, Belgian Congo, label of parcel sent from Irumu July 18, 1915 to Nioka, bearing 25c blue (2x) Mols bilingual 1910 issue, with "T" mark and manuscript "010" (double of the insufficiency). Rate of April 1, 1910 for domestic printed matter 5c/50gr - weighed at "533"gr "11p" = 55c, paid with 10c carmine Mols bilingual 1910 issue with sheet margin with boxed overprint "TAXES" (type IX), manuscript "Taxe payée à Kilo" (=Tax paid at Kilo) + paraph, the post office of Kilo will open May 1, 1917 and the post office of Nioka July 24, 1944, stamps rusted, but one of the most scarce rate, masterpiece of the postal history of Belgian Congo postage due, fine, with Lindekens certificate

280 €





2003

- 2003  1910, Italy, picture postcard franked with 5c sent from Frascati in June 1910 to Loova (Ponthierville) in Belgian Congo, via Anvers, Belgium (June 4) and Stanleyville (Aug. 5), with Italian "T" mark, UPU rate for picture postcard 10c, postage due 10c (double of the insufficiency) paid with 10c carmine Mols bilingual 1910 issue with boxed overprinted "TAXES" (type III), clean and scarce, very fine, with Lindekens certificate

160 €



2004

- 2004  1912, Portuguese Congo (Angola), envelope franked with 25r sent from Santo Antonio do Zaire August 2, 1912 to Banana in Belgian Congo, struck with circular "T" Portuguese mark in black, with manuscript "0,30" in blue, postage due paid with 5c green and 25c blue Mols bilingual 1910 issue with boxed overprint "TAXE" (type IV), superb and scarce, with Lindekens certificate

200 €



2005

- 2005   ✉   1911, Cabo Verde, unfranked envelope from Cabo Verde to Banana in Belgian Congo where it arrived February 6, 1911, carried by paquebot "Otavi" of the Woermann - Linie Hamburg Westafrika XXXIV (Dec 13, 1910), handwritten in red pencil "T" in circle and manuscript "50 ct" in black, paid with 25c (2x) blue Mols bilingual 1910 issue with boxed overprint "TAXE" (type IV), very scarce and attractive, fine

250 €

**Belgian Congo - Mols bilingual 1915 issue - used as postage due stamps**



2006

- 2006   ✉   1921, Belgium, postal stationery at 10c, sent from Brussels May 21, 1921 to Boma in Belgian Congo where it arrived July 25, 1921, with manuscript "T" in pencil, Rate of March 1, 1921 for postcard to Belgian Congo 15c, taxed at 10c (double of the insufficiency), paid with 10c carmine Mols bilingual 1915 issue with "T" mark (type I) as overprint instead of "TAXES" overprint (type IX), applied and cancelled at Boma (July 25), then forwarded to Leopoldville, a good postal stationery, ex Frenay, very fine, with Lindekens certificate

150 €



2007 – recto/verso

2007

1921, Belgium, envelope franked with 5c (4x), sent from Morlanwelz March 21, 1921 to Moto Mines Witsa in Belgian Congo, the reverse with Port Said (March 31), El Shallal (April 1) Luqsor Station (April 1), travel post office Shellal Halfa (April 5) and Aba (May 12), Belgian rate (March 1, 1921) for cover to Belgian Congo 25c/20gr, with "T" mark in black and manuscript "015" in red, calculation error, it should have been 10c., paid with 5c green with corner of sheet Mols bilingual 1915 booklet issue (plate Gamma 3 – position 10) and 10c carmine with sheet margin Mols bilingual 1915 booklet issue (plate Alpha 3 – position 2) with boxed overprint "TAXES" (type IX) applied and cancelled at Aba (May 28, 1921), the only known usage of booklet stamps used as postage due, unique, great rarity, very fine, ex Du Four, Ex Herreweghe, with Lindekens certificate

500 €



2008 – recto/verso

2008   ✉   1922, Great Britain, envelope franked with 2p, sent from London April 4, 1922 to Kambove in Belgian Congo where it arrived May 1, 1922, with British “T” mark, manuscript “35” in pencil, paid on reverse with 5c green and 10c carmine (3x) Mols bilingual 1915 issue with boxed overprint “TAXES” (type IX) and cancelled Kambove (May 3, 1922), ex Herreweghe, beautiful franking with 4 stamps (scarce), fine, with Lindekens certificate

150 €



2009

2009   ✉   1920, South Africa, envelope franked with 1d, sent from Johannesburg January 24, 1920 to Elisabethville in Belgian Congo where it arrived February 5, with South African “T 30c” mark, rate for international cover 2 ½d, paid with a horizontal pair of 15c green Mols bilingual 1915 issue (plate V+C – position 26-27) with boxed overprint “TAXES” (type IX) and cancelled Elisabethville (Feb. 5), Ex Frenay, clean cover, very fine, with Lindekens certificate

150 €



2010

2010 ☒

1919, South Africa, envelope franked with ½d, sent from Johannesburg December 31, 1919 to Elisabethville in Belgian Congo where it arrived January 9, 1920, with South African “T 40 centimes” mark, rate for international cover 2 ½d, paid with 40c brown-red Mols bilingual 1915 issue (plate II+A3) with boxed overprint “TAXES” (type IX) and cancelled Elisabethville (Janv. 13), clean cover, very fine, with Lindekens certificate

150 €

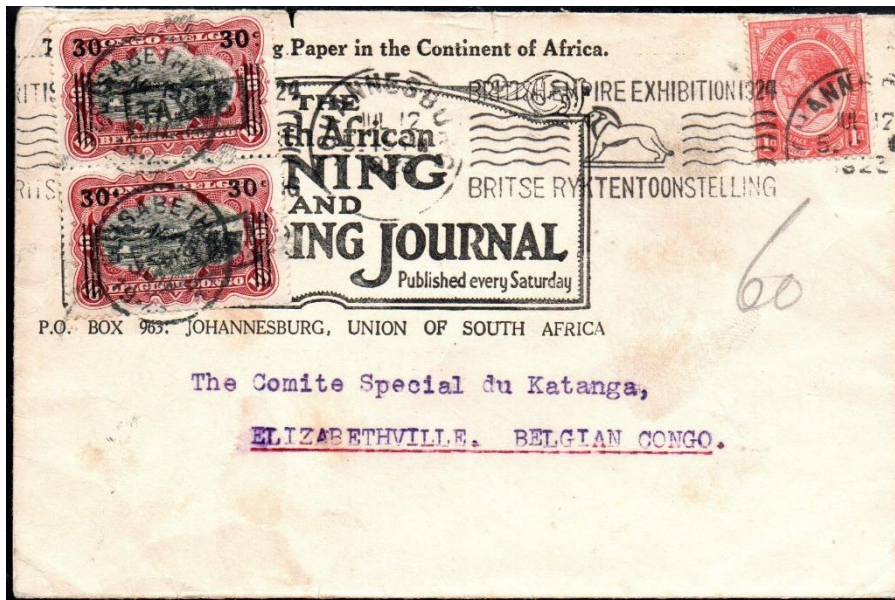


2011

2011 ☒

1922, Belgian Congo, unfranked envelope, sent by the “sous chef de gare” in Kamatanda railway station of the BCK railway to Elisabethville where it arrived December 1, 1922 (cachet type 5), with manuscript “T 0,50” in pencil (double of the insufficiency), rate of March 1, 1921 for domestic cover 25c/20gr, paid with 50c on 25c blue Mols Recuperation 1921 issue with boxed overprint “TAXES” (type IX) and cancelled at Elisabethville Dec 4, 1922 (cachet type 1), ex Jeukens, folded but very scarce

120 €



2012

2012    ✉    1923, South Africa, envelope franked with 1d, sent from Johannesburg July 12, 1923 to “Comité Special du Katanga” Elisabethville in Belgian Congo where it arrived July 17, 1923 (cachet type 5), with manuscript “60” in pencil (double of the insufficiency), paid with vertical pair of 30c on 10c carmine Mols Recuperation 1921 issue with boxed overprint “TAXES” (type IX) and cancelled Elisabethville July 24 (cachet type 1), superb cover, scarce tax amount, very fine, with Lindekens certificate

150 €



2013

2013    ✉    1923, Belgian Congo, notice form of Elisabethville August 13, 1923 about an envelope taxed at 30c, with demand to take the envelope at “Guichet 4”, paid with 5c on 50c red-brown Mols Malines overprint issue with boxed overprint “TAXES” (type IX) and 25c Vloors issue with boxed overprint “TAXES” (type IX) tied by Elisabethville cachet (type 5) August 17, 1923, scarce only 3 items known with combination of Mols and Vloors issues, very fine, with Lindekens certificate

280 €

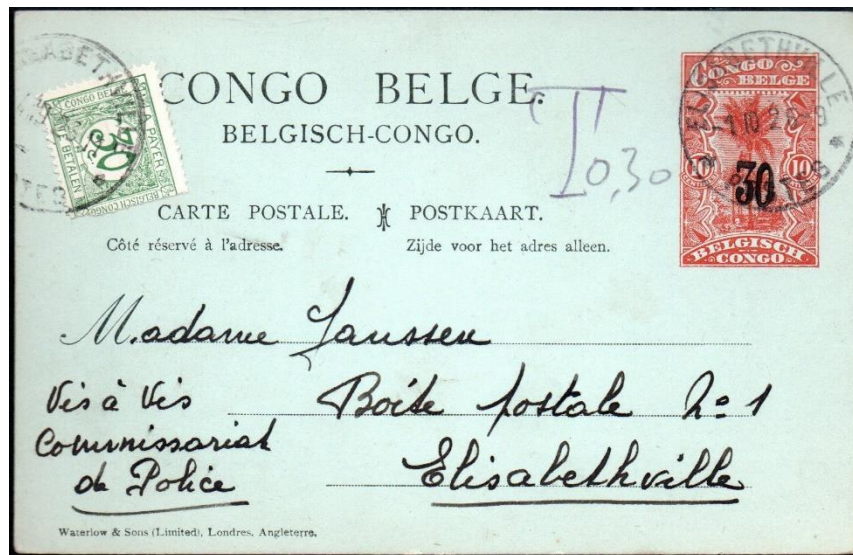


2014

2014   ✉   1923, Belgian Congo, unfranked envelope, written in Equateur and sent from Coquilhatville January 26, 1923 to Leopoldville where it arrived January 31, 1923 (cachet type 5), with “T” mark and manuscript “050” in blue pencil (double of the insufficiency), Rate of March 1, 1921 for domestic cover 25c/20gr, paid with 50c on 25c blue Mols Malines overprint 1922 issue (plate III1+B, very scarce) with boxed overprint “TAXES” (type IX) and cancelled at Leopoldville , ex Frenay, partial envelope but very scarce usage of the Mols Malines overprint issue, opened for exhibit, with Lindekens certificate

150 €

**Belgian Congo – 1923 postage due issue**



2015

2015   ✉   1926, Belgian Congo, postal stationery at 30c, stibbe nr 57, sent from Sankishi (South of Bukama) to Elisabethville where it was cancelled at arrival October 1, 1926, (on the day of the rate change), rate of October 1, 1926 for domestic postcard 45c, with manuscript “T 0,30” in pencil (double of the insufficiency), paid with 30c green postage due stamp of the 1923 issue and tied by Elisabethville October 4, 1926, superb, Belgian Congo postal stationery taxed in domestic service are very scarce, very fine, with Lindekens certificate

120 €



2016

1926, Belgian Congo, envelope probably sent from the "Haut Congo" to an engineer, head of division in BCK (railway company), franked with 50c Vloors issue tied at arrival with "ILEBO T.S.F." (telegraphic cancellation – very scarce) October 27, 1926, rate of October 1, 1926 for domestic cover 75c/20gr, taxed at 50c (double of the insufficiency), paid with 50c ultramarine postage due stamp of the 1923 issue and tied also by Ilebo T.S.F. (telegraphic cachet) October 1, 1926, very scarce and superb

2016

250 €



2017

1934, Belgian Congo, unfranked registered envelope sent from Dongo to Libenge where it arrived April 28, 1934, the registered label and the "T" mark were applied at arrival at Libenge, rate of February 1, 1934 for domestic cover 1,50fr/20gr + registration 2,50fr, taxed at 8fr (double of the insufficiency), paid with 1fr (8x) grey postage due stamps of the 1923 issue and tied by Libenge cachet April 28, 1934, the post office of Dongo opened August 30, 1956, spectacular and very uncommon, with Lindekens certificate

2017

150 €





2018

2018

1938, Belgian Congo, unfranked envelope sent from Lusambo August 21, 1938 to Kabinda where it arrived August 27, 1938, reverse Luluabourg (Aug. 22), with "T" mark and manuscript "2,50" in pencil, rate of September 15, 1935 for domestic cover 1,25fr/20gr, taxed at 2,50fr (double of the insufficiency), paid with 50c ultramarine and vertical pair of 1fr grey postage due stamps of the 1923 issue and tied by Kabinda cachet August 27, 1938, very fresh cover

100 €



2019

2019

1940, Belgian Congo, registered envelope franked with 25c, 2,50fr and 5fr of the Native issue, sent from Boma September 26, 1940 to Sakania where it arrived October 3, reverse Leopoldville (Sept. 29) and Elisabethville (Sept. 30), rate of September 15, 1935 for domestic cover 1,25fr/20gr + registration 2,50fr + domestic airmail 1fr/5gr (4x) = 7,75fr, correctly franked but taxed at 75c (which corresponds to the extra normal rate) error of calculation of the Boma post office, paid with 10 carmine, 15c violet and 50c ultramarine postage due stamps of the 1923 issue and tied by Sakania cachet October 3, 1940, very interesting cover with the scarce usage of the small postage due stamps (stamps less than 50c are scarce), very fine and attractive cover

150 €



2020

2020

1924, Belgium, picture postcard franked at 15c, sent from Herstal May 30, 1924 to the H.C.B. (Huileries du Congo Belge) in Tango in Belgian Congo, with "T" mark and manuscript "0,50" in pencil, rate of May 1, 1924 for picture postcard to Belgian Congo 30c, taxed at 30c (An UPU directive of 14 March 1921 set the minimum tax at 30c, applicable from 1 January 1922), paid with 30c green postage due stamp of the 1923 issue tied by Leopoldville cachet (type 1) July 9, 1924, the usage of cachets type 1 (23mm.) are scarce on postage due 1923 issue, very clean and fine, with Lindekens certificate

80€

2021

1924, Belgium, picture postcard franked at 25c, sent from Havelange September 25, 1924 to Leopoldville in Belgian Congo, with "T" mark, rate of May 1, 1924 for picture postcard to Belgian Congo 30c, taxed at 10c error of calculation (An UPU directive of 14 March 1921 set the minimum tax at 30c, applicable from 1 January 1922), paid with 10c carmine postage due stamp of the 1923 issue tied by Leopoldville cachet November 5, 1924, very uncommon error of taxation, very fine, with Lindekens certificate

120€



2021

2022

1925, Belgium, picture postcard franked at 25c, sent from Gent March 23, 1925 to Stanleyville in Belgian Congo, with "T" mark, rate of May 1, 1924 for picture postcard to Belgian Congo 30c, taxed at 30c (An UPU directive of 14 March 1921 set the minimum tax at 30c, applicable from 1 January 1922), paid with 30c green postage due stamp of the 1923 issue tied by Stanleyville cachet (type 5) May 19, 1925, very fine

60€



2022



2023 ☑

1927, Belgium, postal stationery (no text on reverse) at 20c, sent from Cureghem April 23, 1927 to Lisala in Belgian Congo where it arrived June 8, 1927, with "T" mark and manuscript "0,50", rate of October 1, 1926 for postcard to Belgian Congo 45c, taxed at 50c (double of the insufficiency), paid with 5c sepia, 15c violet and 30c green postage due stamps of the 1923 issue tied by Lisala cachet type 1 (23mm. cachet is scarce on this issue), June 8, 1927, a very interesting item showing the usage of the small values of the 1923 postage due issue, very fine

100€

2023



2024

2024 ☑

1928, Belgium, envelope franked at 60c, sent from Namur July 18, 1928 to Stanleyville in Belgian Congo where it arrived August 18, 1928, with manuscript "T 80" in blue pencil, rate of May 1, 1927 for cover to Belgian Congo 1fr, taxed at 80c (double of the insufficiency), paid with 30c green and 50c light blue postage due stamps of the 1923 issue tied by Stanleyville cachet type 7 August 20, 1928, very fine

100 €

2025 ☑

1930, Belgium, picture postcard franked at 35c, sent from Liege June 19, 1930 to Elisabethville in Belgian Congo, with "T" mark, rate of May 1, 1927 for picture postcard to Belgian Congo 60c, taxed at 50c (double of the insufficiency), paid with a vertical pair of 10c carmine and 30c green postage due stamps of the 1923 issue tied by Elisabethville cachet (type 7) July 3, 1927, the usage of the small values of postage due stamps are scarce (instead of the stamp of 50c), very fine

130€



2025



2026

2026 ✉

1924, France, envelope franked with 1c (type Blanc), sent from Paris May 5, 1924 to Matadi in Belgian Congo where it arrived May 31, 1924, with French triangular "T" mark, taxed at 50c, paid with 50c ultramarine postage due stamp of the 1923 issue tied by Matadi cachet (type 5) June 1, 1924, then forwarded to Thysville where it arrived June 5, with manuscript on reverse "Inconnu Thysville" in pen and boxed cachet "INCONNU" in black, note in red ink "Retour office français", very impressive cover, definitely an exceptional item of postal history, very fine

150 €



2027

2027 ✉

1932, Sweden, picture postcard franked at 10c, sent from Runemo July 3, 1932 to Leopoldville in Belgian Congo where it arrived August 5, 1932, with Swedish boxed "T" mark in violet and manuscript "T 10" in pencil, Congolese note "0,50" in pencil, taxed à 50c, paid with 50c ultramarine postage due stamp of the 1923 issue tied by Leopoldville cachet August 5, 1932, very fine

100 €



2028

2028

1935, Netherlands, airmail envelope franked at 32 1/2 cent, sent from Oud-Gastel March 7, 1935 to N'Zobe Km 83 (railway) Belgian Congo, reverse Anvers March 7, Leopoldville March 13, Boma March 16 and Lukula March 19, with manuscript "T 20" and on reverse "nu, per 20g 20 cent extra", taxed at 40c, paid with a vertical strip of 3 + 1 of the 10c carmine postage due stamps of the 1923 issue tied by Lukula cachet March 20, 1935 (N'Zobe post office closed since July 30, 1898), a very beautiful multiple usage of the 10c carmine postage due stamp, very fine

150 €



2029

2029

1929, Great Britain, envelope franked at three half pence, sent from London October 9, 1929 to Leopoldville in Belgian Congo where it arrived November 9, 1929, British mark "T 20" and manuscript "080" in blue pencil, taxed at 60c, paid with vertical pair of 30c green postage due stamps of the 1923 issue tied by Leopoldville cachet November 12, 1929, rusted, still interesting cover

80 €



2030

- 2030  1928, South Africa, picture postcard franked at 1d, sent from Capetown October 12, 1928 to Elisabethville in Belgian Congo where it arrived October 28, 1928, with South African "T10c" mark in black, taxed at 60c, paid with 30c (2x) green postage due stamps of the 1923 issue tied by Elisabethville cachet October 25, 1928, one 30c stamp damaged, otherwise a very clean postcard

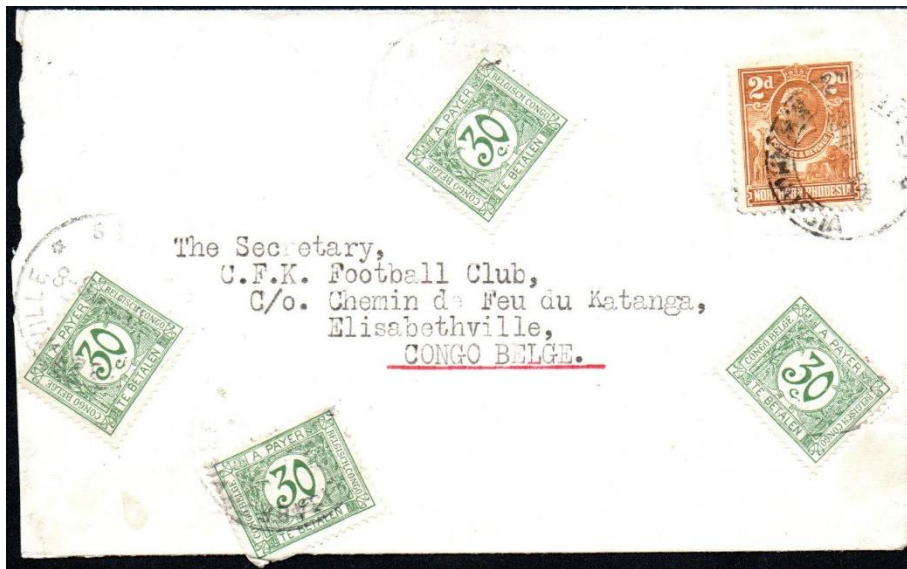
50 €



2031

- 2031  1930, South Africa, envelope franked at 1d, sent from Johannesburg June 26, 1930 to Anglo Belgian Boundary Commission Elisabethville in Belgian Congo where it arrived July 2, 1930, with South African "T 35 centimes" mark in black, taxed at 2,50fr, paid with 5c sepia, horizontal pair 15c violet and vertical pair 1fr grey postage due stamps of the 1923 issue tied by Elisabethville cachet (type 7) July 7, nice combination of postage due stamps, the usage of the small values is scarce, a very uncommon cover, very fine

150 €

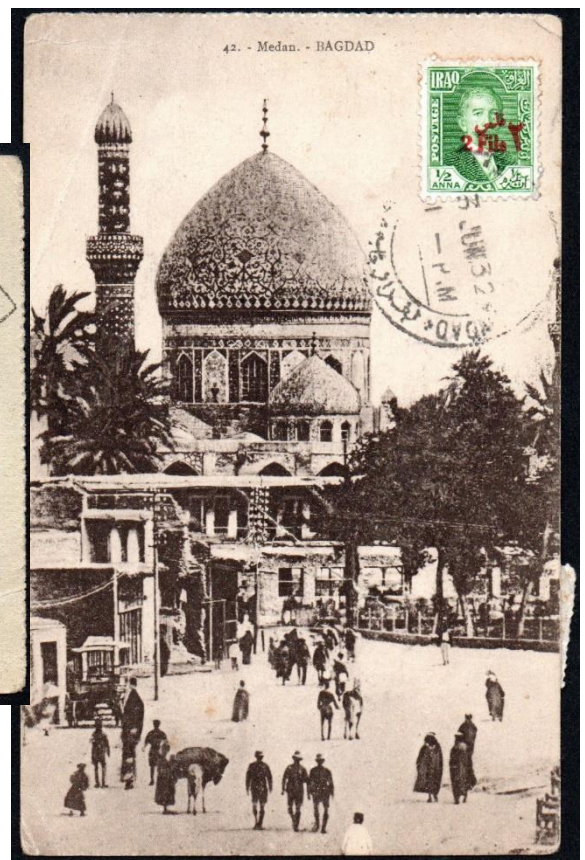


2032

2032 ☐

1928, Northern Rhodesia, envelope franked at 2d, sent from Ndola April 23, 1928 to the Football club of Elisabethville in Belgian Congo where it arrived April 29, 1928, reverse Sakania April 28, taxed at 1,20fr, paid with 30c (4x) green postage due stamps of the 1923 issue tied by Elisabethville cachet April 29, 1928, a beautiful multiple of the 30c postage due stamp, very fine cover

150 €



2033 – recto/verso

2033 ☐

1932, Kingdom of Irak, picture postcard franked at 1/2 anna, sent from Baghdad June 3, 1932 to Elisabethville in Belgian Congo, via Baghdad D.L.O. (Dead Letter Office) June 4, with circle "T" mark and "2d", taxed at 1,20fr, paid with 1fr grey postage due stamp of the 1923 issue and 20c Vloors issue used as postage due stamps (scarce) and tied by Elisabethville cachet July 13, the addressee having returned to Belgium, the postcard was redirected to Val St Lambert where the taxation was reapplied, taxed at 70c, paid by a 70c brown-red Belgian postage due issue of 1929 and tied by Val St Lambert cachet August 17, 1932, superb double taxation, with a mix of issues, major item, very nice

180 €



2034

2034 ✉

1936, Uganda, envelope franked at 20c, sent from Jinja August 29, 1936 to Goma in Belgian Congo where it arrived September 16, reverse Nizi (Sept. 12) and Irumu (Sept. 13), multiple forwarding Goma (Sept. 17), Irumu (Sept. 26), Stanleyville (Sept. 28) and Leopoldville (Nov. 27), with Ugandan "T" mark in black, taxed at 1fr, paid with 1fr grey with sheet margin and sheet number "...64" postage due stamp of the 1923 issue tied by Irumu cachet September 26, 1936, the only known cover showing postage due stamp with margin sheet number, very fine

150 €



2035

2035 ✉

1940, Nigeria, envelope franked at 1d, sent from Nigerian Railway July 2, 1940 to railway of B.C.K. Elisabethville in Belgian Congo where it arrived September 22, 1941 (1 year later!), via Lagos (July 27), Cotonou in Dahomey (Aug. 21), Brazzaville (Sept. 17) and Leopoldville (Sept. 17), with Nigerian "T" mark in black, taxed at 1fr, paid with 10c carmine and vertical strip of 3 with sheet margin of the 30c postage due stamps of the 1923 issue tied by Elisabethville cachet September 23, 1941, the usage of the small values instead of 1fr is scarce, very impressive cover, very fine

150 €



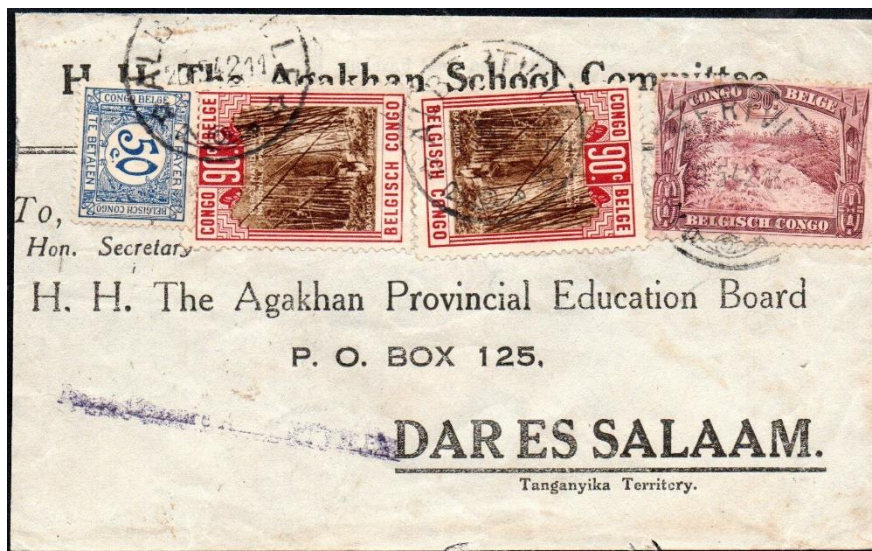
**Belgian Congo - 1923 postage due issue used as ordinary stamps - Stamps lack period**



2036

2036  1942, Belgian Congo, envelope franked with 1,50fr National Parks issue and 1fr grey postage due stamp of 1923 issue used as ordinary stamp, sent from Kasongo May 1, 1942 to C.F.L. (railway company) in Albertville where it arrived May 6, rate of December 1, 1940 for domestic cover 2,50fr for first 10gr, correctly franked, scarce

120 €



2037

2037  1942, Belgian Congo, envelope franked with 90c (2x) National Parks issue, 20c native issue and 50c ultramarine postage due stamp of 1923 issue used as ordinary stamp, sent from Albertville May 20, 1942 to Dar-Es-Salaam in Tanganyika, rate of January 1, 1942 for cover to member of the African Union Post 2,50fr for first 20gr, with straight-line censor mark "PASSE CENSURE ALBERTVILLE" (type Ea), correctly franked, scarce

120 €

Belgian Congo - 1943 postage due issue - perforation 12 1/2



2038

2038 ☐

1943, Belgian Congo, unfranked envelope, sent from Jadotville December 5, 1943 to Bianco, reverse Tenke (Dec. 8), with "T" mark in black, rate of January 1, 1942 for domestic cover 2,5fr/20gr, taxed at 5fr (double of the insufficiency), paid with 1fr brown (per. 12 1/2) and vertical pair of 2fr orange (perf. 12 1/2) with sheet margin postage due stamps of 1943 issue tied by Tenke cachet December 19, 1942, only few covers are known with perforation 12 1/2, very difficult to fine, definitely a scarce cover

200 €



2039

2039 ☐

1944, Belgian Congo, unfranked envelope, sent from Boma February 16, 1944 to Matadi where it arrived February 17, with "T" mark in black, rate for domestic mail between natives 50c, taxed at 1fr (double of the insufficiency), paid with vertical strip of 3 + one 10c olive (perf. 12 1/2) and vertical strip of 3 of 20c blue (perf. 12 1/2) postage due stamps of 1943 issue tied by Matadi cachet February 17, 1944, only few covers are known with perforation 12 1/2, one stamp of 10c damaged (eaten by a "cockroach"), scarce usage of the small values, very difficult to fine

200 €

**Belgian Congo - 1943 postage due issue - perforation 14 x 14 ½**



2040 ☑

1950, Belgian Congo, envelope franked with 1fr (3x) and 2,50fr Masks issue, sent from Elisabethville August 22, 1950 to Leopoldville where it arrived August 23, 1950, with "T" mark in black, manuscript "3fr", rate of April 1, 1950 for domestic cover 3fr first 10gr, taxed at 3fr (double of the insufficiency), paid with 50c (2x) with sheet margin green (perf. 14x14 1/2) and 2fr orange (perf. 14x14 1/2) postage due stamps of 1943 issue tied by Leopoldville 1-Q cachet August 24, 1950, very fine

90€

2040 – recto/verso

2041 ☑

1951, Belgian Congo, envelope franked with red meter mark 75c, sent from Costermansville October 12, 1951 to Nya-Lukemba where it arrived October 12, forwarded to Kalima where it arrived October 16, with "T" mark and manuscript "2,25fr" behind 10c, unsuccessful attempt by the sender to use the business paper rate at 75c (because he closed the envelope = ordinary mail), rate of April 1, 1950 for domestic mail 3fr for first 10gr, taxed at 2,25fr (only the insufficiency), paid with horizontal pair of 10c olive (perf. 14x14 1/2) and 2fr orange (perf. 14x14 1/2) postage due stamps of 1943 issue tied by Kalima October 17, 1951, missing 5c because no 5c postage due stamp issued (the post office could have used a 5c ordinary stamp), the usage of the small values is scarce, a nice cover, very fine

90€



2041



2042

1951, Belgian Congo, envelope franked with red meter mark 75c, sent from Costermansville December 11, 1951 to Nya-Lukemba where it arrived December 11, forwarded to Kalima where it arrived December 17, with "T" mark and manuscript "2,25fr" behind 2fr, unsuccessful attempt by the sender to use the business paper rate at 75c (because he closed the envelope = ordinary mail), rate of April 1, 1950 for domestic mail 3fr/10gr, taxed at 2,25fr (only the insufficiency), paid with 20c blue (perf. 14x14 1/2), 2fr orange (perf. 14x14 1/2) with sheet margin postage due stamps of 1943 issue and 5c palms issue (ordinary stamp used as postage due) tied by Kalima December 18, 1951, the usage of ordinary stamps as postage due stamps is very scarce, a good mixed franking on cover, opened for exhibit, very fine

2042 ☒

120 €



2043

1953, Belgian Congo, envelope franked with 15c and 60c flowers issue, sent from Nya-Lukemba to Bukavu (= Costermansville) where it arrived April 10, with "T" mark and manuscript "0,70" crossed out and replaced by "0,50", rate of December 15, 1945 for domestic 'Facture' 1fr, taxed at 50c, paid with 50c green (perf. 14x14 1/2) postage due stamps of 1943 issue tied by Costermansville cachet April 14, 1953, very difficult rate, a good cover showing the usage of the 50c alone, 10c (2x) removed due to the post office recalculation, very fine, with Lindekens certificate

2043 ☒

120 €



2044

2044 ☐

1956, Belgian Congo, envelope franked with 75c flowers issue, sent from Elisabethville January 11, 1956 to Luluabourg where it arrived January 21, with "T" mark in black and manuscript "4,50frs" crossed out and replaced by "5,25frs", error of the postman 4,50fr was the correct amount (double of the insufficiency) rate of December 15, 1948 for domestic mail 3fr for the first 10gr, paid with 1fr brown (perf. 14x14 1/2), 2fr horizontal pair with sheet margin orange (perf. 14x14 1/2) postage due stamps of 1943 issue and 25c flowers issue (ordinary stamp used as postage due) tied by Luluabourg-1C cachet January 21, 1956, the usage of ordinary stamps as postage due stamps is very scarce, a good combination franking on cover, very fine

120 €



2045

2045 ☐

1959, Ruanda Urundi, envelope franked with 3fr flowers issue, sent from Usumbura August 13, 1959 to Kamituga in Belgian Congo where it arrived August 18, with manuscript "T 2fr" in blue pen, rate of April 1, 1950 for domestic mail 3fr for the first 10gr + 1fr for extra rate/10gr, taxed at 2fr, paid with a horizontal pair with sheet margin of 1fr brown (perf. 14x14 1/2) postage due stamps of 1943 issue tied by Kamituga cachet August 29, 1959, a very late usage of the issue of the 1957 postage due issue, very clean cover, scarce

120 €

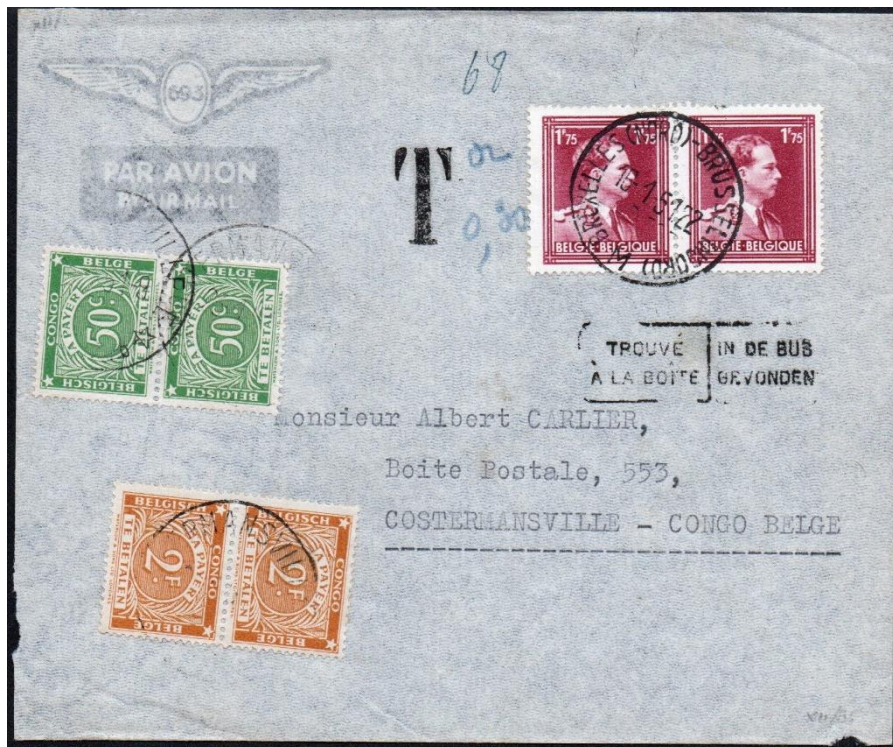


2046

1951, Belgium, Ruanda Urundi reply postal stationery (Stibbe nr RU34) uprated with 5c Stanley issue, datelined St Armandsberg in Belgium and sent from Gent July 31, 1951 to Elisabethville in Belgian Congo where it arrived August 29, 1951, with "T" mark and manuscript "2,50" in blue, rate of December 15, 1948 for postcard to Belgian Congo 1,20fr, taxed at 2,40fr (double of the insufficiency up to 2,50fr) because the postal stationery and the stamp are out of use, paid with bloc of 5 of the 50c green (perf. 14x14 1/2) postage due stamps of 1943 issue, return to sender and Belgian stamp (??) cancelled at arrival in Gent October 3

2046 ☐

100 €



2047

1951, Belgium, airmail envelope franked at 3,50fr, sent from Brussels January 15, 1951 to Costermansville in Belgian Congo where it arrived January 20, with Belgian boxed cachet "Trouvé à la boîte / in de bus gevonden" and "T" mark with manuscript "0,30 or", rate of December 15, 1948 for cover to Belgian Congo 3fr/20gr + airmail rate 3fr/5gr, taxed at 6fr (double of the insufficiency), paid with vertical pair of 50c green (perf 14x14 1/2) and vertical pair of 2fr orange (perf. 14x14 1/2) postage due stamps of the 1943 issue tied by Costermansville cachet January 23, 1951, clean cover, very fine

2047 ☐

100 €



2048

2048 ✉

1953, Belgium, airmail envelope franked at 4fr (type Baudouin Marchand), sent from Ath December 5, 1953 to Leopoldville in Belgian Congo where it arrived December 7, with "T" mark and manuscript "0,25f or", rate of December 15, 1952 for cover to Belgian Congo 3fr/20gr + airmail rate 3fr/5gr, taxed at 4fr (double of the insufficiency), paid with vertical pair of 2fr orange (perf. 14x14 1/2) postage due stamps of the 1943 issue tied by Leopoldville-1L cachet January 20, 1954, very fresh and fine

100 €

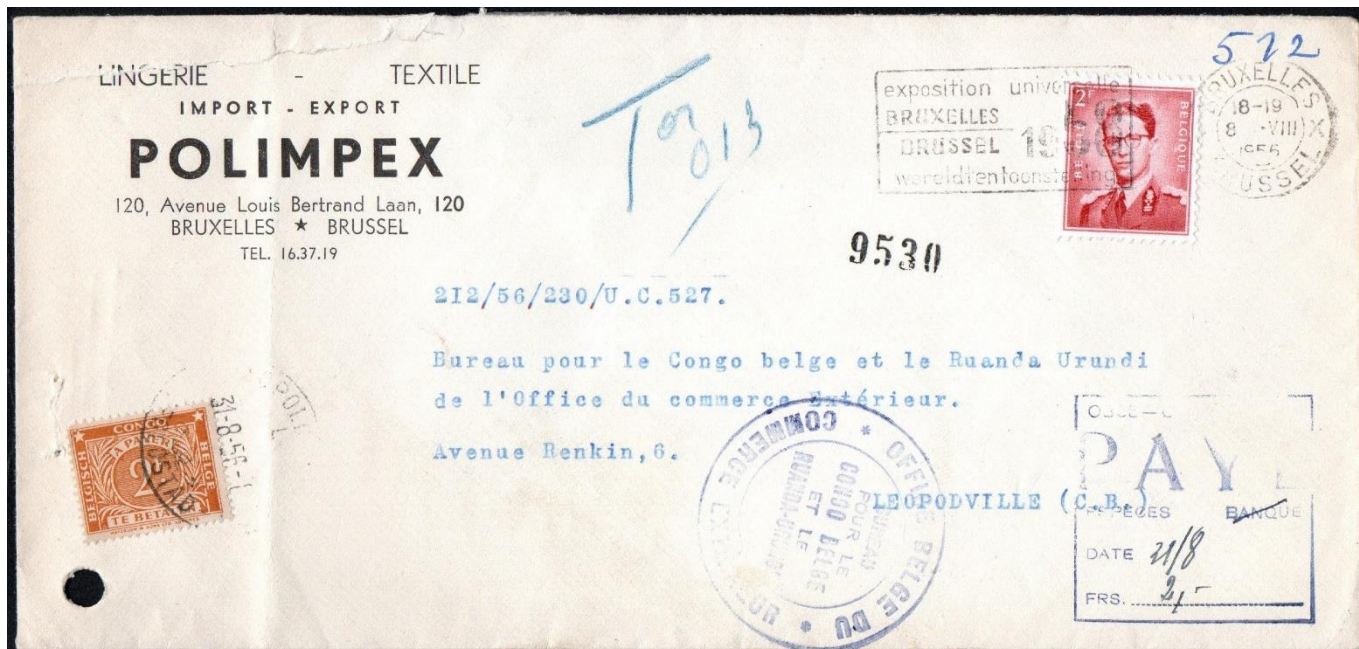


2049

2049 ✉

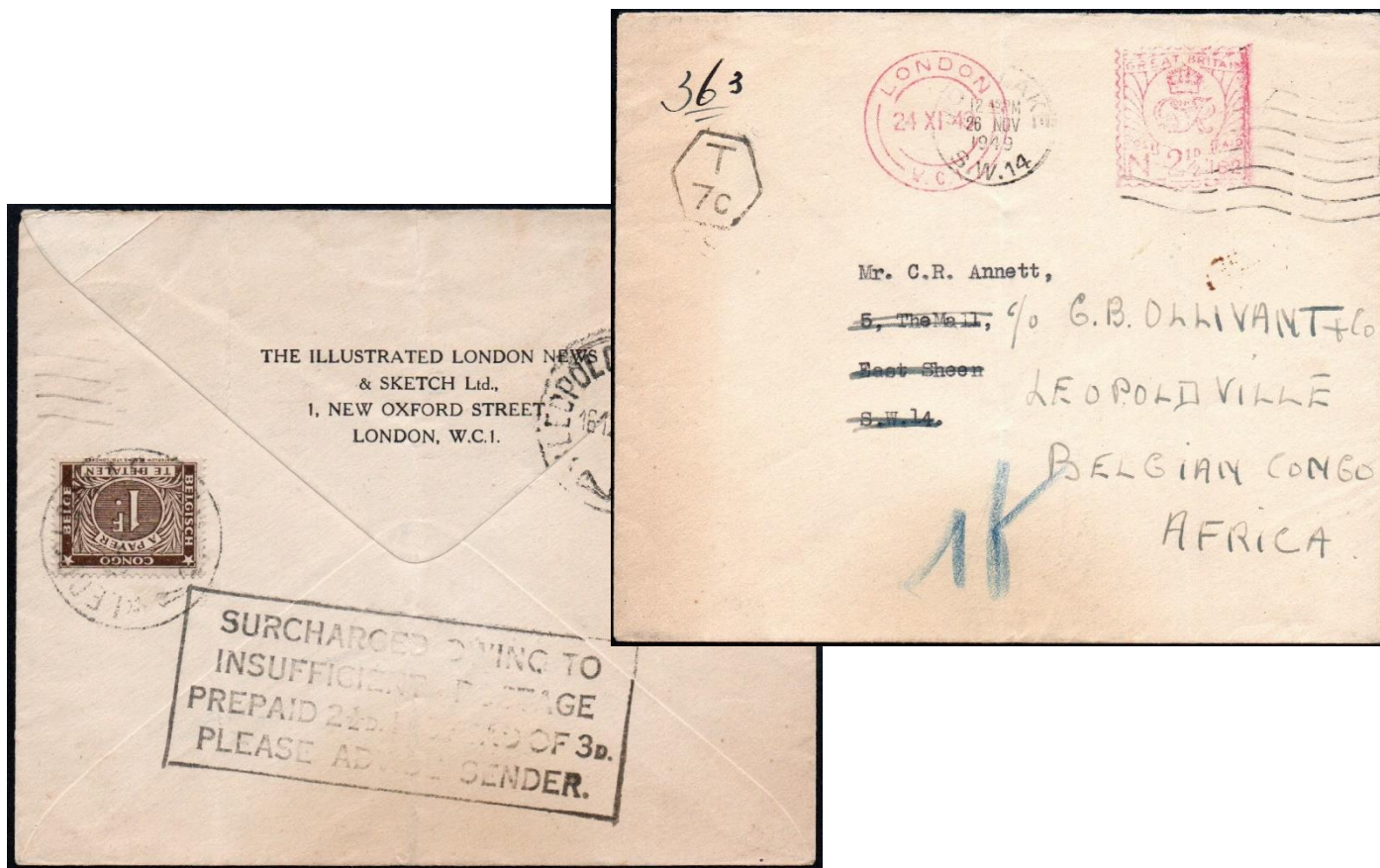
1954, Belgium, airmail envelope franked at 7fr (type Baudouin Marchand), sent from Brussels January 18, 1954 to Costermansville (=Bukavu) in Belgian Congo where it arrived January 22, with "T" mark and manuscript "0,13 fr or", rate of December 15, 1952 for cover to Belgian Congo 3fr/20gr + airmail rate 3fr first 10gr + 2fr/5gr extra, taxed at 2fr (double of the insufficiency), paid with horizontal pair of 1fr brown (perf. 14x14 1/2) postage due stamps of the 1943 issue tied by Bukavu-1E cachet January 28, 1954, very fine

100 €



2050

2050  1956, Belgium, envelope franked at 2fr (type Baudouin Marchand), sent from Brussels August 8, 1956 to Leopoldville in Belgian Congo where it arrived August 29, 1956, with manuscript "T 0,13 or" in blue pencil, taxed at 2fr (double of the insufficiency), paid with 2fr orange (perf. 14x14 1/2) postage due stamp of the 1943 issue tied by Leopoldville-1L cachet August 31, with administrative cachet of the OBCE "PAYE 31/8 - 2F", a good cover showing the usage of 2fr alone 100 €



2051 – recto/verso

2051  1949, Great Britain, envelope franked at 2 1/2d, sent from London November 24, 1949 to East Sheen SW14 and forwarded to Leopoldville in Belgian Congo where it arrived December 16, 1949, with British boxed cachet "SURCHARGED OWING TO INSUFFICIENT POSTAGE PREPAID 2 1/2D INSTEAD OF 3D PLEASE ADVISE SENDER" (scarce) and "T 7c" mark, taxed at 1fr, paid on reverse side with 1fr brown (perf. 14x14 1/2) postage due stamp of the 1943 issue tied by Leopoldville cachet December 19, folded but still an exceptional cover 150 €



2052

1955, France, airmail picture postcard franked at 40fr, sent from Wasselonne August 17, 1955 to Leopoldville in Belgian Congo where it arrived August 20, 1955, with French mark "T" and manuscript "0,25 frs or" in red cross out and replaced by "1fr" in blue, taxed at 1fr, paid with 1fr brown (perf. 14x14 1/2) postage due stamp of the 1943 issue tied by Leopoldville-1L cachet August 23, very fine

100 €



2052



zoom



2053 – recto/verso

2053

1959, France, envelope franked at 25fr, sent from Paris January 26, 1959 to Albertville Belgian Congo where it arrived February 21, with manuscript "T 0,30" in blue and Congolese manuscript "16gr - 5fr" in red, taxed at 5fr, paid on reverse side with 20c blue (25x) (perf. 14x14 1/2) postage due stamps of the 1943 issue tied by Albertville P.C.T. cachet February 21, 1959, one of 20c with curiosity if printing "big spots" very impressive franking and an example of late use of this postage due issue, very fine

160 €



2054 – recto/verso

2054  1959, France, airmail envelope franked at 50fr, sent from Sigean July 4, 1959 to Elisabethville in Belgian Congo where it arrived July 9, with manuscript "T=0,86" (frs or) in red, taxed at 14fr, paid with 50c green (16x on front and a bloc of 12x on reverse side) (perf. 14x14 1/2) postage due stamps of the 1943 issue tied by Elisabethville-1C cachet July 10, 1959, very impressive franking and an example of late use of this postage due issue, very fine

160 €



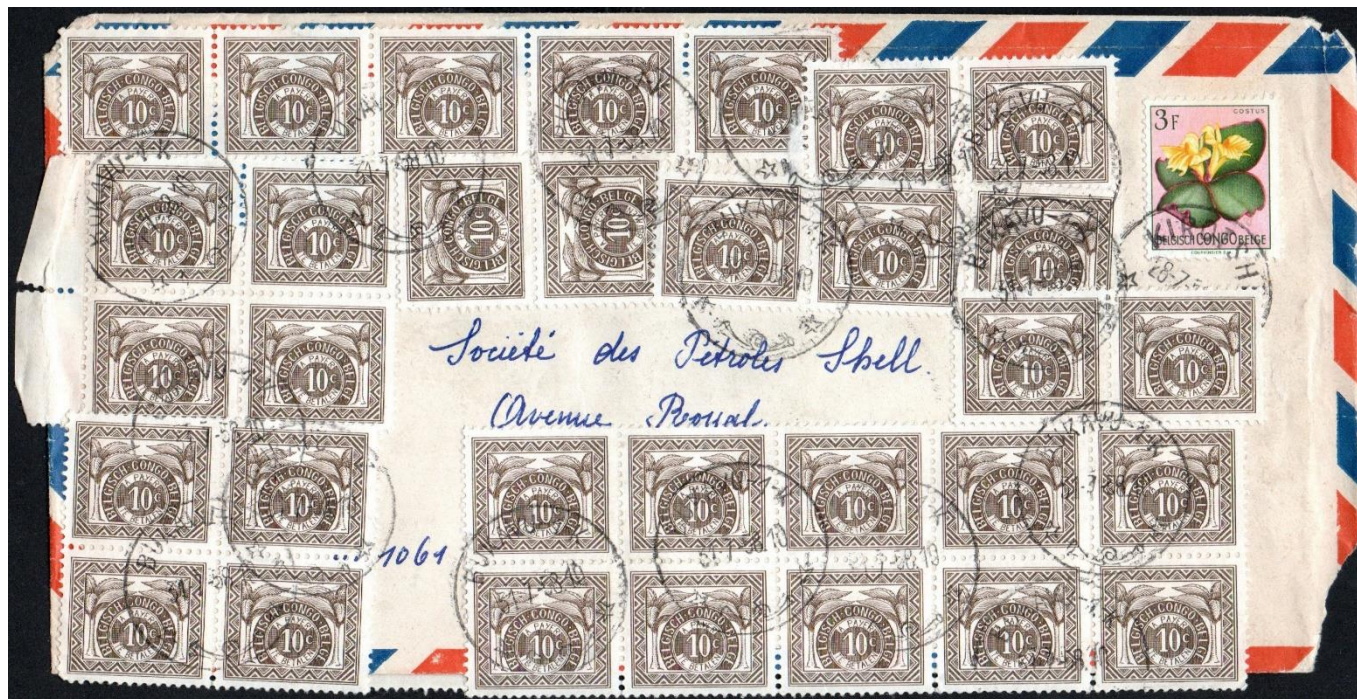
2055

1956, A.E.F., airmail envelope franked at 25fr, sent from Pointe-Noire August 30, 1956 to Leopoldville where it arrived August 31, forwarded to Basinga Lisala, with French triangular mark "T", taxed at 70c, paid with 20c blue (perf. 14x14 1/2) and 50c green (perf. 14x14 1/2) postage due stamps of the 1943 issue tied by Leopoldville-1L cachet September 7, 1956, superb and very fine

120 €

2055

Belgian Congo - 1957 postage due issue



2056 – recto/verso

2056

1958, Belgian Congo, envelope franked with 3fr flowers issue, sent from Kirotshé July 28, 1958 to Bukavu where it arrived July 31, 1958, rate of April 1, 1950 for domestic cover 3fr for first 20gr + 1fr/ extra 20gr (3x), taxed at 6fr (double of the insufficiency), paid with 10c bistre-brown (32x on front and a 28x on reverse side = 60 stamps) (= one sheet of 50 stamps + 10 stamps ) postage due stamps of the 1957 issue tied by Bukavu July 31, 1958, very impressive franking of this postage due issue, probably unique, very fine

150 €



2057

2057 ☒

1958, Belgian Congo, envelope franked with 50c flowers issue, sent from Leopoldville December 25, 1958 to intra town, with "T" mark and manuscript "2frs", rate of October 1, 1958 for domestic cover less than 3km 1,50fr/50gr, taxed at 2fr (double of the insufficiency), paid with a 2fr red postage due stamp of 1957 issue tied by straight-line mark "LEOPOLDVILLE1 LEOPOLDSTAD" in black, a very scarce usage of this cachet, unique, very fine

180 €



2058

2058 ☒

1957, Belgium, airmail envelope franked at 8,20fr, sent from Brussels July 2, 1957 to Leopoldville in Belgian Congo where it arrived July 5, 1957, forwarded to Kikwit where it arrived July 6, with manuscript "T 3fr" in blue, taxed at 3fr, paid with a vertical strip of 3 stamps of 1fr blue postage due stamps of the 1957 issue tied by Kikwit-A cachet July 6, 1957, the calculation of the taxation to be made, fine and interesting

100 €



2059

2059  1958, Belgium, airmail envelope franked at 4fr, sent from Kortrijk October 31, 1958 to Leopoldville in Belgian Congo where it arrived November 4, with "T" mark and manuscript "4fr", rate of December 15, 1952 for cover to Belgian Congo 3fr/20gr + airmail rate 3fr/5gr, taxed at 4fr (double of the insufficiency), paid with 4fr violet postage due stamp of the 1957 issue tied by Leopoldville-1Y cachet November 5, 1958, a very fine cover showing the 4fr stamp alone, superb

120 €



2060

2060  1959, Belgium, airmail envelope franked at 3fr (type Poortman), sent from Zaventem January 27, 1959 to Stanleyville in Belgian Congo where it arrived February 4, 1957, with "T" mark and manuscript "0,37" (fr or) and Belgian label "Trouvé à la boîte / In de bus gevonden", rate of October 1, 1957 for cover to Belgian Congo 3fr/20gr + airmail rate 3fr/5gr, taxed at 6,60fr (double of the insufficiency), paid with 20c (3x) blue postage due stamps of the 1943 issue and 6fr blue-violet of the postage due stamp of the 1957 issue, a rare combination of two postage due issues, very fine and scarce, probably unique

150 €



2061

2061 ✉ 1959, Belgium, airmail picture postcard franked at 3fr (type Poortman), sent from Lier September 24, 1959 to Bukavu in Belgian Congo where it arrived September 30, with "T" mark and manuscript "or 0,613" in pencil, with Belgian label "Trouvé à la boîte / In de bus gevonden", rate for picture postcard less than 5 words (= printed matter rate) 1fr + airmail rate 3fr, taxed at 1fr (simple of the insufficiency), very fine postcard showing the 1fr stamp alone

60 €



2062

2062 ✉ 1960, France, airmail envelope franked at 0,85fr, sent from Paris May 13, 1960 to Stanleyville in Belgian Congo where it arrived May 18, with manuscript "T 0,42" franc or, taxed at 7fr, paid with 1fr blue and 6fr blue-violet postage due stamps of the 1957 issue tied by Stanleyville-1F cachet May 18, 1960, a clean cover

100 €



2063

2063  1960, Dahomey, airmail cover franked at 25fr, sent from Cotonou April 27, 1960 to Leopoldville in Belgian Congo where it arrived May 13, with French "T" mark and manuscript "0,185" franc or, airmail mention crossed out, Congolese note "3f", taxed at 3fr, paid with 1fr bleu and 2fr red postage due stamps of the 1957 issue tied by Leopoldville-IT cachet May 19, 1960, very fine and uncommon incoming mail

120 €



2064

2064  1961, Belgium, airmail envelope franked at 3fr (type Marchand), sent from Brussels 24, 1961 to Leopoldville-Kalina in Republic of Congo where it arrived February 28, 1961, manuscript "T 0,44 or" and "8fr", rate cover by airmail to Republic of Congo 6,50fr for first 10gr, taxed at 8fr, paid with 2fr red and 6fr blue-violet postage due stamps of the 1957 issue, the republic of Congo never issue postage due stamps and still use the Belgian Congo stamps and when they were finally exhausted, the taxations where paid with ordinary stamps, very special and interesting cover

80 €



2065 ☑

1969, France, envelope franked with red meter mark "40", sent from Paris July 22, 1969 to Kinshasa in Republic of Congo where it arrived September 8, with manuscript "T 60/70", taxed at 8fr, paid with horizontal pair of 4fr violet postage due stamps of the 1957 issue tied by Kinshasa cachet September 10, as the addressee had returned to Paris, the cover was returned to Paris, where it arrived September 16, and taxed at "0,60" paid with vertical pair of 0,30 French postage due stamps, very good cover, showing a double taxation

70 €

2065

**Belgian Congo - ordinary stamps used as postage due stamps**



2066

2066 ☑

1942, Belgian Congo, envelope franked with 60c Palms 1942 issue, sent from Leopoldville October 18, 1942 to Matadi where it arrived October 20, 1942, on reverse Leopoldville1 cachet (Oct. 19), with "T" mark and manuscript "3,80" in pencil, rate of December 1, 1940 for domestic business papers first 50gr 2,50fr, taxed at 3,80fr (double of the insufficiency), paid with ordinary postage 3,50fr on 3fr airmail issue and 30c Palms 1942 issue overprinted "T" and tied by Matadi cachet (Oct. 21), cover crumpled and folded, so far the only known envelope showing an airmail stamp used as postage due stamp, great rarity

150 €





2067

2067  1942, Belgian Congo, unfranked commercial envelope sent to Costermansville where it arrived July 10, 1942, rate of December 1, 1940 for a domestic cover 2,50fr for first 10gr + 75c/ extra 10gr (2x), taxed at 8fr (double of the insufficiency), paid with ordinary stamps 10c (3x), 15c and 25c Palms 1942 issue, horizontal pair of 1,25fr Native issue and horizontal pair of 2,40fr National Parks, all with overprint "T" and tied by Costermansville cachet July 10, 1942, very colorful postage due franking with 3 different issues, very fine

150 €



2068

2068  1942, Belgian Congo, envelope franked with 15c and 20c Native issue, sent from Matadi June 13, 1942 to Luozi, with manuscript mark "T 0,15" correction "0,85", taxed at 85c, paid with ordinary stamps 40c (2x) Native issue and 5c Palms 1942 issue overprinted "T" in black, the calculation of the taxation to be made, fine and interesting, very fine

100 €



2069

2069 ✉

1945, Belgian Congo, envelope franked with horizontal pair of 1,25fr Palms 1942 issue, sent from Boma June 10, 1945 to Leopoldville where it arrived June 13, forwarded to Leopoldville-Kalina (June 14), with "T" mark and manuscript "1,50", rate of December 1, 1940 for a domestic cover 2,50fr for first 10gr + 75c/ extra 10gr, taxed at 1,25fr (double of the insufficiency), paid with ordinary stamps horizontal pair of 75c Palms 1942 issue tied by Kalina cachet June 14, stamps not overprinted by "T" mark are scarce, archiving holes

100 €



2070 – recto/verso

2070 ✉

1946, Ruanda Urundi, envelope franked with 75c (2x) Palms 1942 issue, sent from Usumbura March 26, 1946 to Leopoldville Belgian Congo where it arrived March 29, with "T" mark and manuscript "2," rate of December 1, 1940 for a domestic cover 2,50fr for first 10gr, taxed at 2fr (double of the insufficiency), paid with ordinary stamps horizontal pair of 25c and horizontal pair of 75c of the Palms 1942 issue tied by Leopoldville cachet April 4, 1946, stamps not overprinted by "T" mark are scarce, very fine

100 €



2071

2071  1946, Belgian Congo, envelope franked with 50c Palms 1942 issue, sent from Gungu August 1946 to Monkoto, reverse Kikwit (August 8), Coquilhatville (August 21) and Boende (August 26), with "T" mark, taxed at 1,50fr, paid with ordinary stamps half 1fr (cut vertically) and 1fr of the Palms 1942 issue, a fine example of cut stamp from the "Monkoto" archive, very fine

120 €



2072

2072  1946, Belgian Congo, envelope franked with 2fr Palms 1942 issue, sent from Tungurume to Jadotville where it arrived March 31, 1946 (stamp cancelled at arrival), with "T" mark and manuscript "1fr", rate of December 1, 1940 for a domestic cover 2,50fr for first 10gr, taxed at 1fr (double of the insufficiency), paid with ordinary stamps horizontal pair of 50c Palms 1942 issue overprinted "T" and tied by Jadotville cachet April 3, 1946, very nice

100 €



2073

2073 ☒

1955, Belgian Congo, envelope franked with 50c (2x) Flowers issue, sent from Matadi February 19, 1955 to Leopoldville where it arrived February 21, with "T" mark, rate of April 1, 1950 for domestic cover 3fr/10gr, taxed at 1fr (double of the insufficiency), paid with ordinary stamp 4fr Flowers issue tied by Leopoldville-1L cachet February 23, 1955, stamps not overprinted by "T" mark are scarce, very fine and clean cover

100 €



2074

2074 ☒

1952, Belgium, airmail envelope franked at 6fr (type Poortman), sent from Brussels June 30, 1952 to Bakwanga in Belgian Congo where it arrived July 4, 1952, on reverse Leopoldville (July 1), with manuscript "T 0,13" (francs or) in pencil, taxed at 2,15fr, paid with ordinary stamps 15c and 2fr Masks issue tied by Bakwanga cachet August 5, stamps not overprinted by "T" mark are scarce, very fine

100 €



2075

2075 ✉ 1965, Belgium, airmail envelope franked with 3fr (horizontal pair - type Marchand), sent from Brussels October 20, 1965 to Bukavu in Republic of Congo where it arrived October 25, with boxed "Trouvé à la boîte / In de bus gevonden" and "T" mark and manuscript "0,07 or", taxed at 3fr, paid with ordinary stamp 3fr national palace issue tied by Bukavu-1H cachet November 3, 1965, very scarce and clean

50 €

**Ruanda Urundi - Mols issue used as postage due stamps**



2076

2076 ✉ 1923, Ruanda Urundi, envelope franked with 15c green Mols bilingual 1915 overprinted EAAOB issue sent from Kigali October 12, 1923 to Kigali, with "T" mark, rate of March 1, 1921 for domestic mail 15c/20gr, paid with vertical pair of 10c on 5c green Mols bilingual 1915 EAAOB and Malines overprinted issue and overprinted "TAXES" (type IX), applied and cancelled at Kigali (October 12), very fine and scarce cover showing Mols used as postage due, very fine

200 €

Ruanda Urundi - 1924 postage due issue



2077

2077 ☒

1927, Tanganyika, envelope franked at 15c, sent from Dar-Es-Salaam March 25, 1927 to Kigali in Ruanda Urundi where it arrived April 9, reverse Usumbura (April 2), taxed at 1,20fr, paid with 10c carmine and 1fr grey Belgian Congo postage due stamps of 1924 issue overprinted "RUANDA URUNDI" and tied by Kigali cachet April 9, 1927, very fine and scarce, great rarity

180 €



2078

2078 ☒

1927, Tanganyika, envelope franked at 15c, sent from Bukoba January 23, 1927 to Kigali in Ruanda Urundi (arrival on reverse), with circle mark "T cents" in purple, taxed at 1fr, paid with 1fr grey Belgian Congo postage due stamp of 1924 issue overprinted "RUANDA URUNDI" and tied by Kigali cachet February 7, 1927, very fine and scarce, great rarity

150 €

**Ruanda Urundi - 1924 postage due issue used as ordinary stamps - Stamps lack period**



2079

2079  1942, Ruanda Urundi, envelope franked with 10c, 1,50fr (2x) Native issue and 10c carmine Belgian Congo postage due stamp of 1924 issue overprinted "RUANDA URUNDI" used as ordinary stamp, sent from Usumbura January 6, 1942 to Albertville in Belgian Congo where it arrived January 16, 1942, rate of December 1, 1940 for domestic cover 2,50fr for first 10gr + 75c/extra 10gr, correctly franked, with censor mark "CENSURE CONGO BELGE" (mark type Baa) in violet applied at Usumbura, scarce

120 €

**Ruanda Urundi - 1943 postage due issue - perforation 12 ½**



2080

2fr orange Belgian Congo postage due of 1943 issue in bloc of 6 stamps unperforated and gummed, MNH (with upper margin of sheet), showing essays of unadopted overprint "RUANDA URUNDI" (straight-line) in black (first stamp - sheet position #2) and "RUANDA URUNDI" (straight-line) in red (fifth stamp - sheet position #32), all stamps punched hole, unique, great rarity of the Ruanda Urundi, very impressive, masterpiece, with Lindekens certificate

300 €



2081

- 2081  1952, Spanish Morocco, registered "R:526/6" (in pencil) envelope franked at 50cts, sent from Tetuán April 12, 1952 to Astrida in Ruanda Urundi, with manuscript "T" in blue pencil, taxed at 2,20fr, paid with 20c blue (perf. 12 1/2) and 2fr orange (perf. 12 1/2) Belgian Congo postage due stamps of 1943 issue overprinted "RUANDA URUNDI" in carmine and tied by Astrida cachet April 29, 1952, superb and very clean cover, the perforation 12 1/2 is extremally scarce

180 €

**Ruanda Urundi - 1943 postage due issue - perforation 14x14 1/2**



2082

- 2082  1963, Kingdom of Burundi, small intra town envelope unfranked, sent from Usumbura-P August 2, 1963, with "T" mark and manuscript "3fr", rate of June 30, 1960 for domestic cover in less than 3km 1,50fr/10gr, taxed at 3fr (double of the insufficiency), paid with 50c (2x) green (perf. 14x14 1/2) and 2fr orange (perf. 14x14 1/2) Belgian Congo postage due stamps of 1943 issue overprinted "RUANDA URUNDI" in red and tied by Usumbura 1 Mandats cachet August 3, 1963, very interesting and scarce cover, ex Jenkens

120 €





2083 – recto/verso

2083 ☒

1967, France, airmail envelope franked at 0,30fr, sent from Morlaix January 24, 1967 to Usumbura in Burundi where it arrived April 27, with French boxed mark "Trouvé à la boîte", "T" mark and manuscript "60/60", "T6" and "By air mail" label crossed out and note in upper left corner "Voie maritime", taxed at 1fr, paid on reverse side with 1fr brown (perf. 14x14 1/2) and 2fr (5x) orange (perf. 14x14 1/2) Belgian Congo postage due stamps of 1943 issue overprinted "RUANDA URUNDI" in red and tied by Usumbura 1 Mandats cachet June 14, 1967 and manuscript note of the postmaster "13.4.67", "14.4.67", "avisé 27/4" and "rappel 14/6", very scarce

120 €

**Ruanda Urundi - 1943 postage due issue used as ordinary stamps - Stamps lack period**

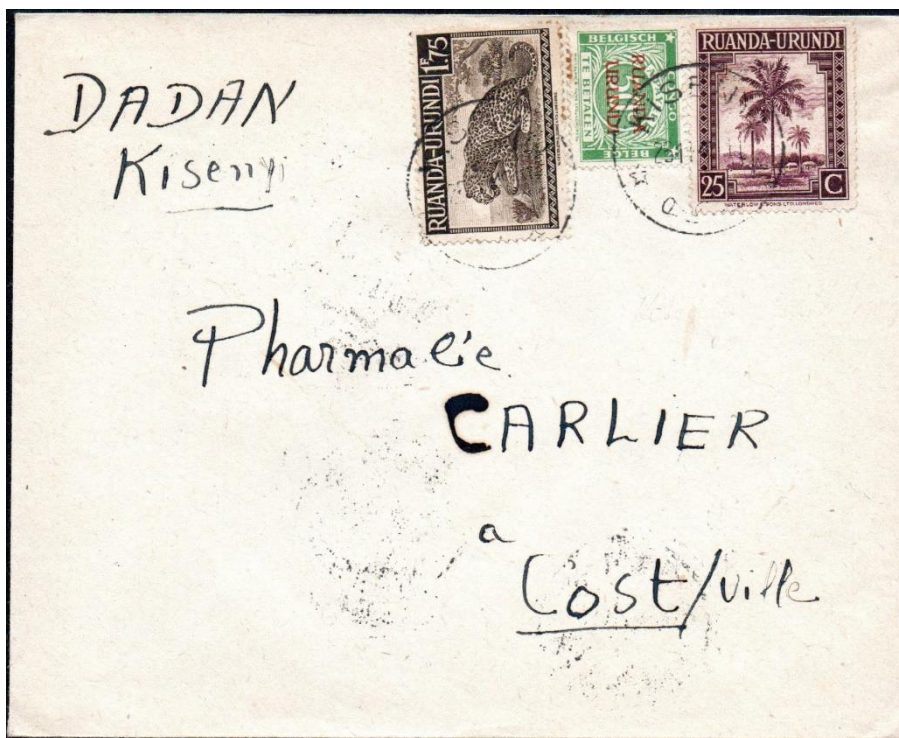


2084

2084

1949, Ruanda Urundi, envelope franked with 50c green (perf. 14x14 1/2) and 2fr orange (perf. 14x14 1/2) Belgian Congo postage due stamps of 1943 issue overprinted "RUANDA URUNDI" used as ordinary stamps, sent from Usumbura November 2, 1949 to Nya-Lukemba in Belgian Congo where it arrived November 2, reverse Costermansville (Nov. 2), rate of December 1, 1940 for domestic cover 2,50fr for first 10gr, correctly franked, scarce cover showing only the usage of postage due stamps as franking

60 €



2085

2085

1949, Ruanda Urundi, envelope franked with 25c & 1,75fr Palms 1942 issue and 50c green (perf. 14x14 1/2) Belgian Congo postage due stamp of 1943 issue overprinted "RUANDA URUNDI" used as ordinary stamp, sent from Kisenyi November 23, 1949 to Costermansville in Belgian Congo where it arrived November 28, rate of December 1, 1940 for domestic cover 2,50fr for first 10gr, correctly franked, very fine

50 €



2086

2086    ✉    1949, Ruanda Urundi, envelope franked with 30c Palms 1942 issue, 20c Masks issue and 1fr (2x) brown (perf. 14x14 1/2) Belgian Congo postage due stamp of 1943 issue overprinted "RUANDA URUNDI" used as ordinary stamps, sent from Usumbura November 18, 1949 to Leopoldville where it arrived November 19, rate of December 1, 1940 for domestic cover 2,50fr for first 10gr, correctly franked, very fine

60 €



2087

2087    ✉    1949, Ruanda Urundi, envelope franked with 1fr Masks issue and 50c green (perf. 14x14 1/2) and 1fr brown (perf. 14x14 1/2) Belgian Congo postage due stamp of 1943 issue overprinted "RUANDA URUNDI" used as ordinary stamps, sent from Usumbura December 17, 1949 to Costermansville in Belgian Congo where it arrived December 18 (error of dater 8 instead of 18), rate of December 1, 1940 for domestic cover 2,50fr for first 10gr, correctly franked, very fine

50 €



2088

2088 ☑

1950, Ruanda Urundi, envelope franked with 30c Palms 1942 issue, 20c & 3,50fr Masks issue and 2fr (vertical pair) orange (perf. 14x14 1/2) Belgian Congo postage due stamp of 1943 issue overprinted "RUANDA URUNDI" used as ordinary stamps, sent from Usumbura February 24, 1950 to United Kingdom, rate of July 1, 1949 for cover sent in international 4fr for first 20gr + 4fr/5gr for airmail rate to Europe, correctly franked at 8fr, very scarce and fine

70 €

### Ruanda Urundi - 1959 postage due issue



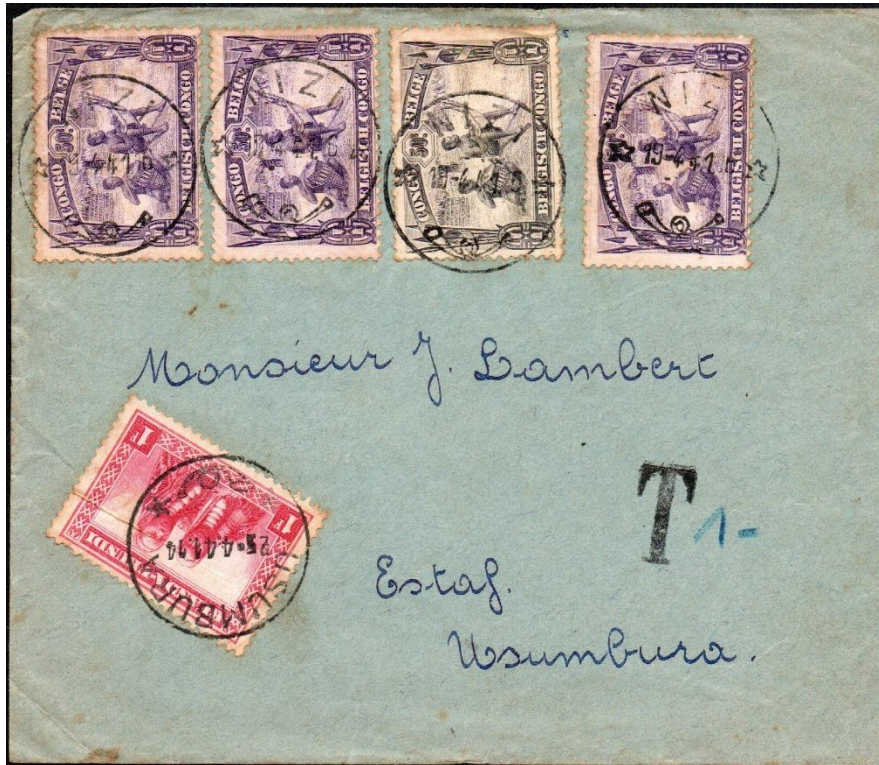
2089 – recto/verso

2089 ☑

1962, Belgium, airmail envelope franked at 8fr (including type Marchand stamps), sent from Brussels January 31, 1962 to Usumbura in Ruanda Urundi where it arrived February 2, 1962, with boxed mark "Trouvé à la boîte / in de bus gevonden", "T" mark and manuscript "0,43fr or" and "7fr", taxed at 8fr (double of the insufficiency), paid with 50c (vertical pair) green (perf. 14x14 1/2) Belgian Congo postage due stamp of 1943 issue overprinted "RUANDA URUNDI" and 6fr blue-violet Belgian Congo postage due stamp of 1957 issue overprinted "RUANDA URUNDI" tied by Usumbura-1 cachet February 10, a rare combination of two postage due issues 1943 & 1959

200 €

## Ruanda Urundi - ordinary stamps used as postage due stamps



2090

2090    ✉    1941, Belgian Congo, envelope franked with 50c (4) Native issue, sent from Nizi April 19, 1941 to Usumbura in Ruanda Urundi where it arrived April 24, via Irumu (April 20) and Costermansville (April 22), with "T" mark and manuscript "1" in blue pencil, rate of December 1, 1940 for domestic cover 2,50fr for first 10gr, taxed at 1fr (double of the insufficiency), paid with a ordinary stamp 1fr of the Native issue tied by Usumbura cachet April 25, 1941, stamps not overprinted by "T" mark are scarce, rusted but still a remarkable cover, very scarce

120 €



LINDEKENS  
 Philatelic Auctions